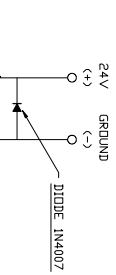
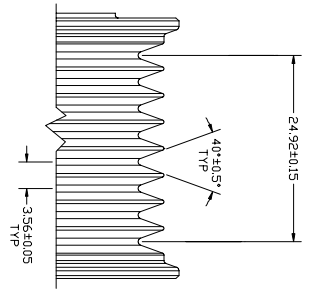


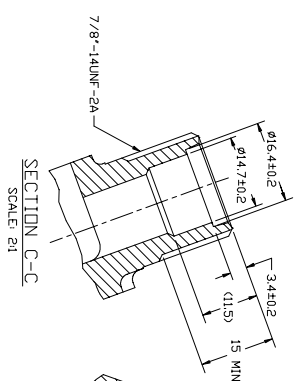
FROM	REV	DATE	REVISIONS	DATE	BY	CHK	APPV
INITIAL RELEASE							
FOR THE COMPRESSOR							
FOR THE MOTOR							
FOR THE BELT DRIVE							
FOR THE REFRIGERANT							
FOR THE ELECTRICAL							
FOR THE MECHANICAL							
FOR THE THERMAL							
FOR THE VIBRATION							
FOR THE NOISE							
FOR THE RELIABILITY							
FOR THE SAFETY							
FOR THE ENVIRONMENTAL							
FOR THE COST							
FOR THE WEIGHT							
FOR THE SIZE							
FOR THE MANUFACTURABILITY							
FOR THE ASSEMBLY							
FOR THE MAINTENANCE							
FOR THE REPAIR							
FOR THE REPLACEMENT							
FOR THE DISPOSAL							
FOR THE RECYCLING							



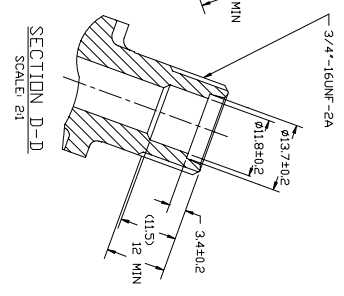
CIRCUIT DIAGRAM



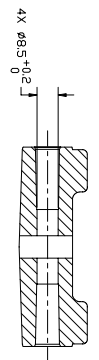
DETAIL B
SCALE: 3:1



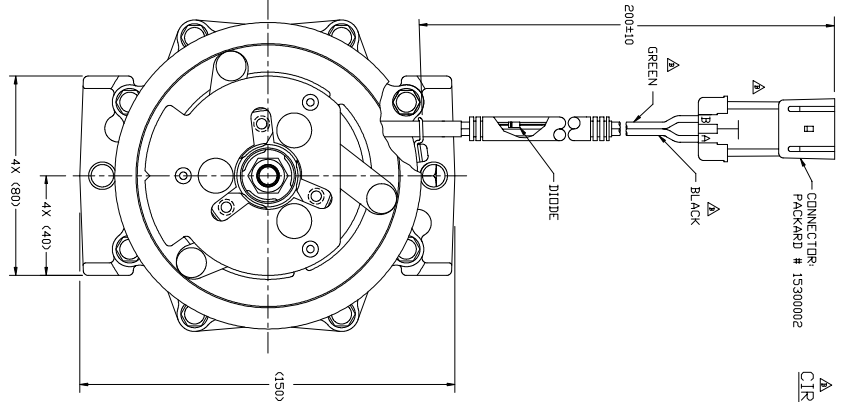
SECTION C-C
SCALE: 2:1



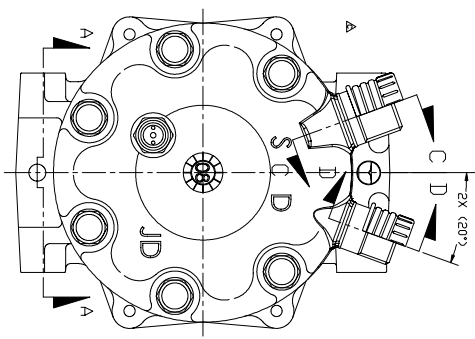
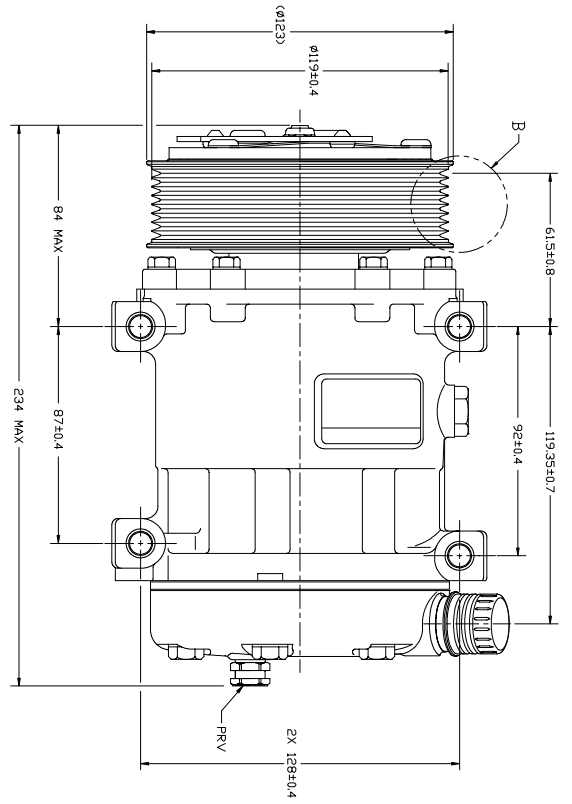
SECTION D-D
SCALE: 2:1



SECTION A-A



CLOCKWISE ROTATION



CLUTCH SPECIFICATIONS (REF.)

RATED VOLTAGE	24V
MINIMUM BREAKAWAY TORQUE	3.4 Nm
MINIMUM ENGAGEMENT VOLTAGE	16V
MAXIMUM FRICTION CONSUMPTION	42 W
BELT TYPE	PV8
MAXIMUM ALLOWABLE BELT TENSION	1177 N
PULLEY DIAMETER	Ø119 mm
CLUTCH TYPE	HEAVY DUTY

COMPRESSOR SPECIFICATIONS (REF.)

DISPLACEMENT PER REVOLUTION	135 CC
MAXIMUM ALLOWABLE RPM	8000 RPM
MAXIMUM ALLOWABLE CONTINUOUS RPM	6000 RPM
REFRIGERANT	R134a
Oil (SP-15)	300 CC

SANDEN METRIC

COMPRESSOR

4074-6000

REV C

DD NOT SCALE