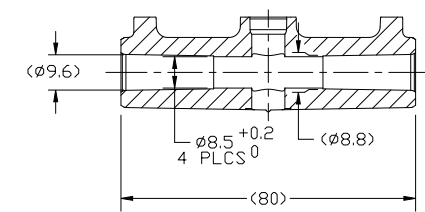
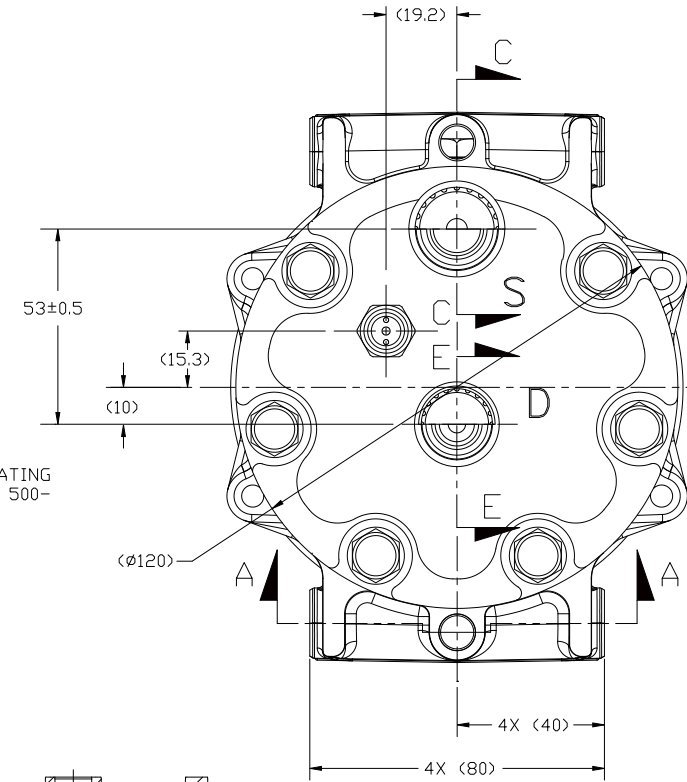
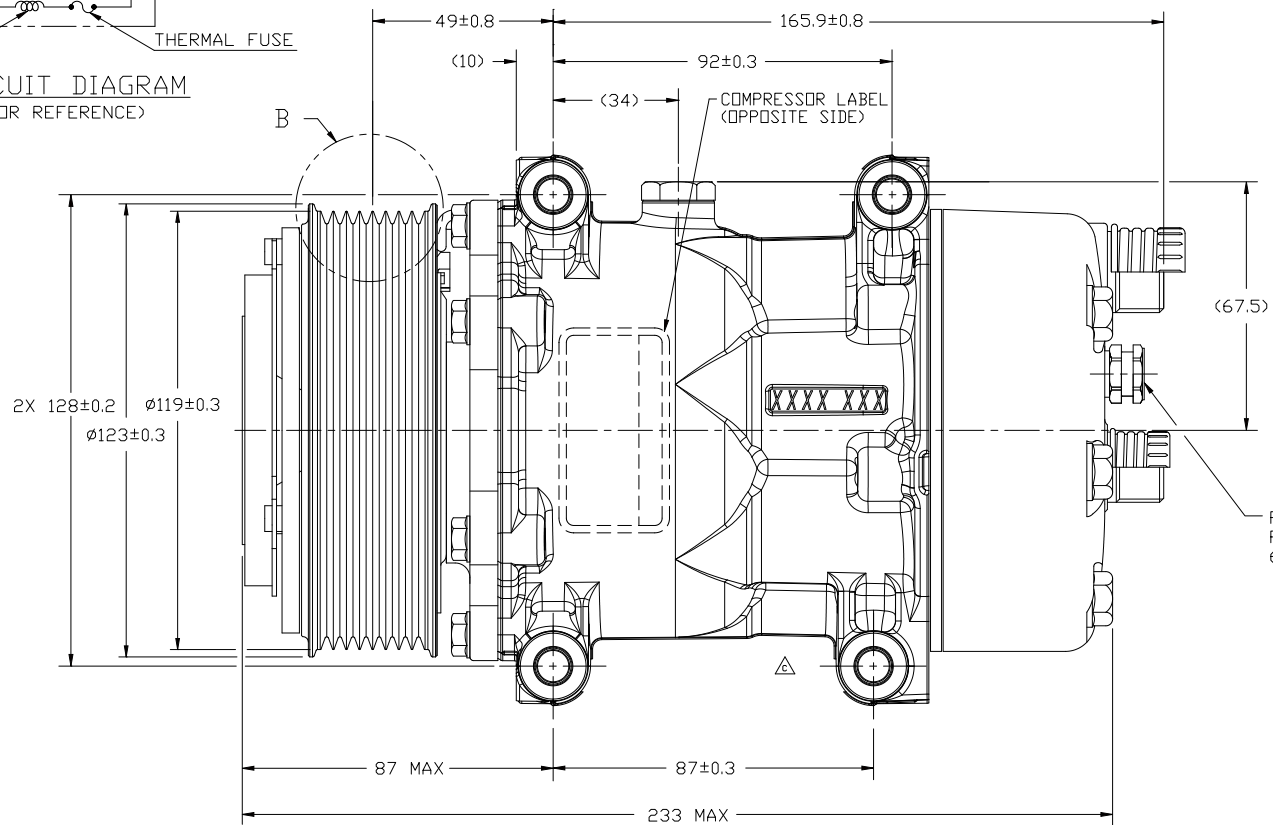
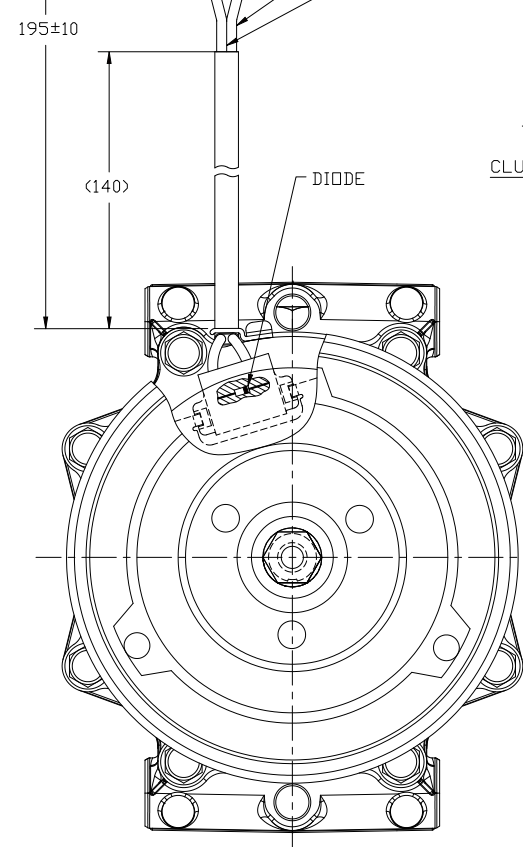
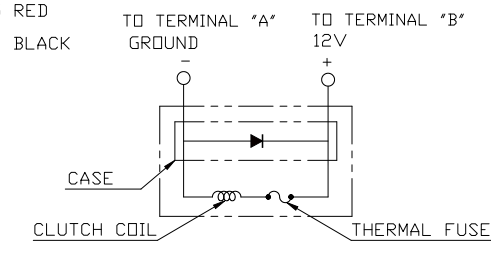
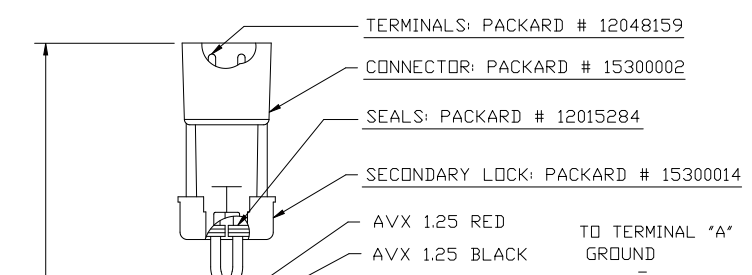
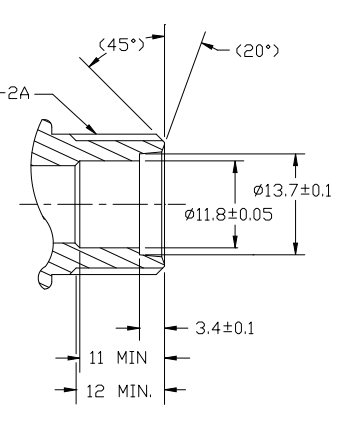
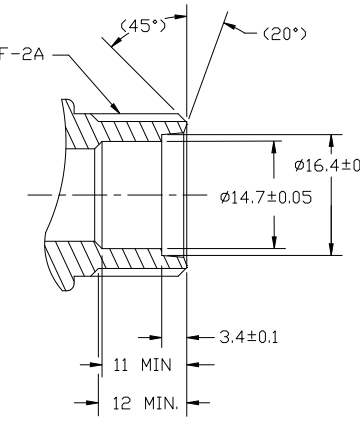
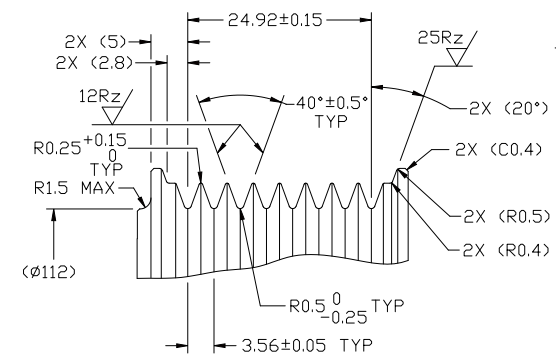
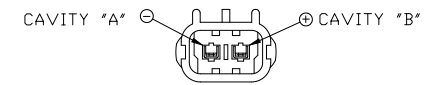


PDCN	REV.	APPV DATE	REVISIONS	DVN	DSGN	CHK	APPV
			INITIAL RELEASE REFERENCE DWG NO 4391-6000 REV D				
8765		1/19/10	REMOVED NITROGEN CHARGE	JS	JS	MK	RM
9663		10/15/11	CYL. BLDOCK 4641-0010 WAS 4722-0010	NB	NB	DRL	HF



COMPRESSOR SPECIFICATIONS (REF.)

DISPLACEMENT PER REVOLUTION	154.9 cc / rev. (9.5cuin. / rev.)
MAXIMUM ALLOWABLE R.P.M.	8000 R.P.M.
MAXIMUM ALLOWABLE CONTINUOUS R.P.M.	6000 R.P.M.
REFRIGERANT	R134a
OIL (SP-15)	300 cc (10.1 fl.oz.)

CLUTCH SPECIFICATIONS (REF.)

RATED VOLTAGE	DC 12V
BREAKAWAY TORQUE	3.5 kgf-m min. @ 12V
MINIMUM ENGAGEMENT VOLTAGE	7.5V @ AIR GAP 0.6mm
POWER CONSUMPTION	49 watts max.
BELT TYPE	PV8 TYPE
MAXIMUM ALLOWABLE BELT TENSION	120 kgf
PULLEY DIAMETER	Ø119 mm (4.68 in.)
CLUTCH TYPE	HEAVY DUTY

DO NOT SCALE

REV. LEVEL	RELEASED FOR	DSGN	APPV	DATE	MATERIAL	NAME	DWG. NO.	REV
A	RELEASED FOR ENGG. DEVELOPMENT	Teresa Gorski	E.M.Arrieta	1/4/08		COMPRESSOR	4090-6000	C
A	RELEASED FOR DESIGN VALIDATION	Teresa Gorski	E.M.Arrieta	1/4/08				
A	RELEASED FOR PRODUCTION	Teresa Gorski	E.M.Arrieta	1/23/08				

SANDEN
SANDEN INTERNATIONAL (U.S.A.), INC.
DRAWN SCALE REF 1:1 PLOTTED SCALE REF NONE METRIC
This drawing and the information contained hereon are CONFIDENTIAL and PROPRIETARY to Sanden International (U.S.A.), Inc., are received in CONFIDENCE and shall not be used, copied, or disclosed to others without the written permission of Sanden International (U.S.A.), Inc.
INTERPRETATION OF THIS DRAWING PER ASME Y14.5M-1994
THIRD ANGLE PROJECTION
MATERIAL:
NAME: COMPRESSOR
DWG. NO.: 4090-6000
REV: C