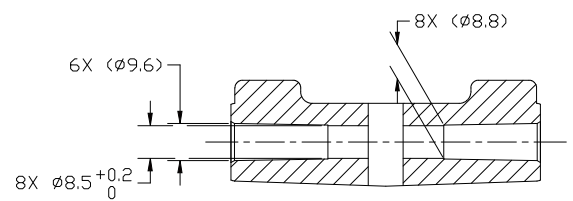
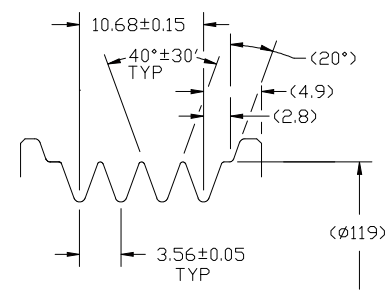


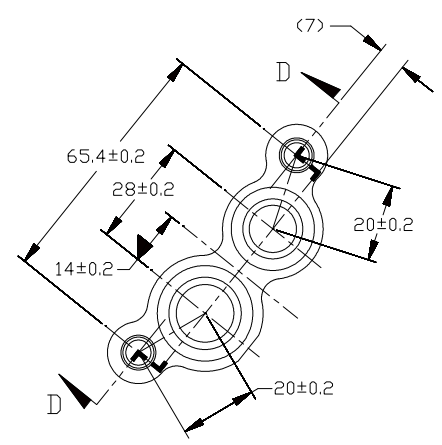
MOUNTING WINDOW



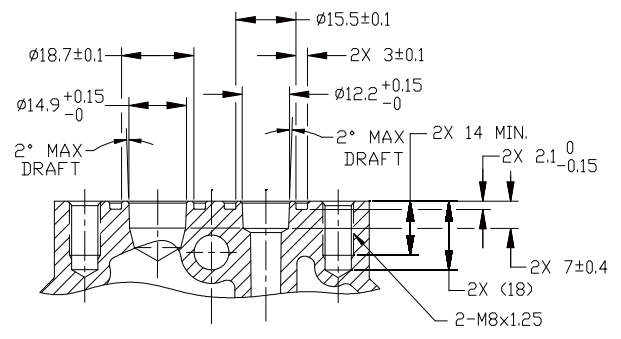
SECTION A-A



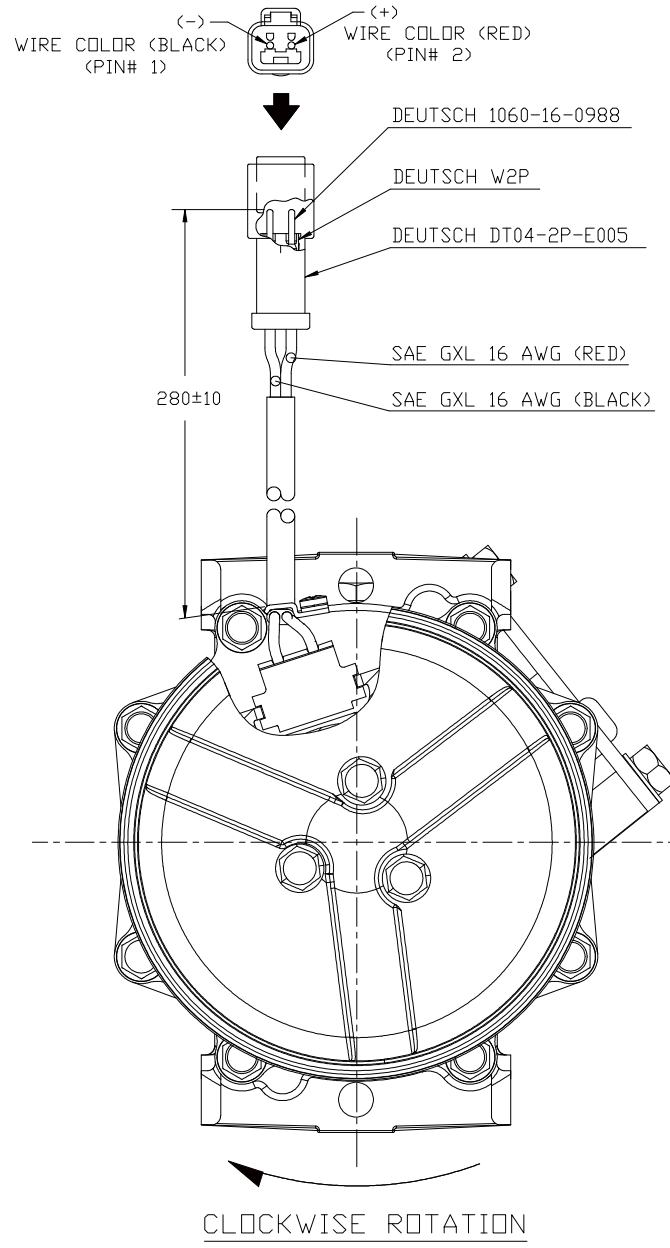
DETAIL B
SCALE: 3:1



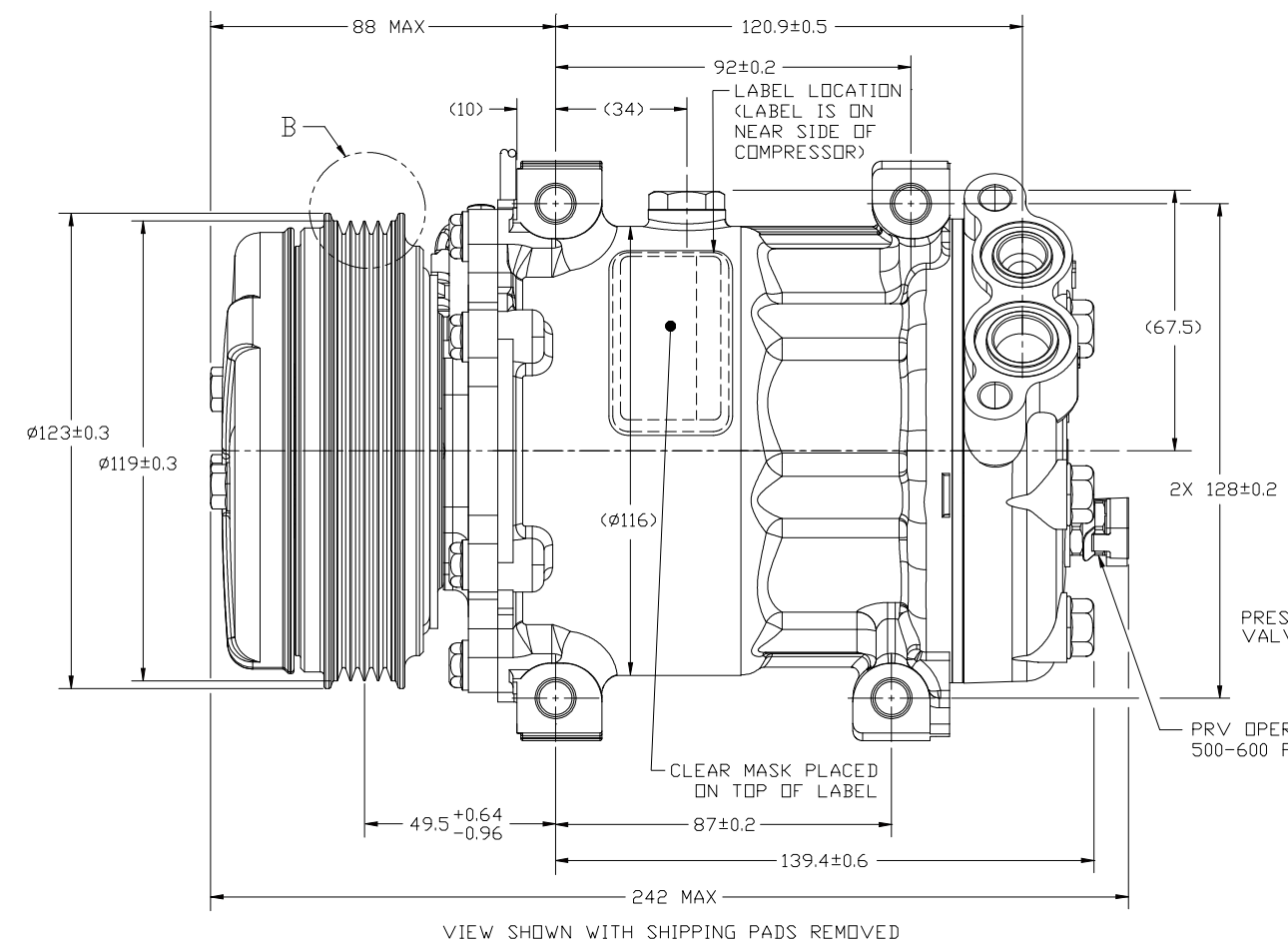
VIEW C-C
VIEW SHOWN WITH SHIPPING PADS REMOVED



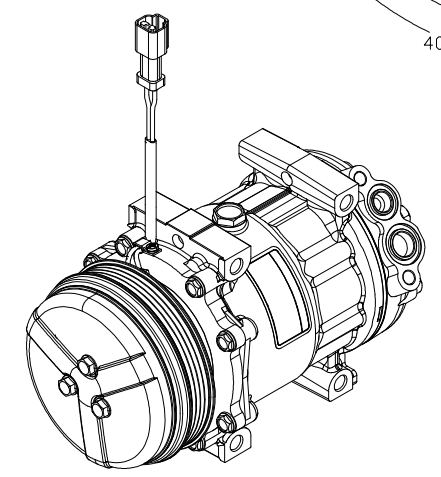
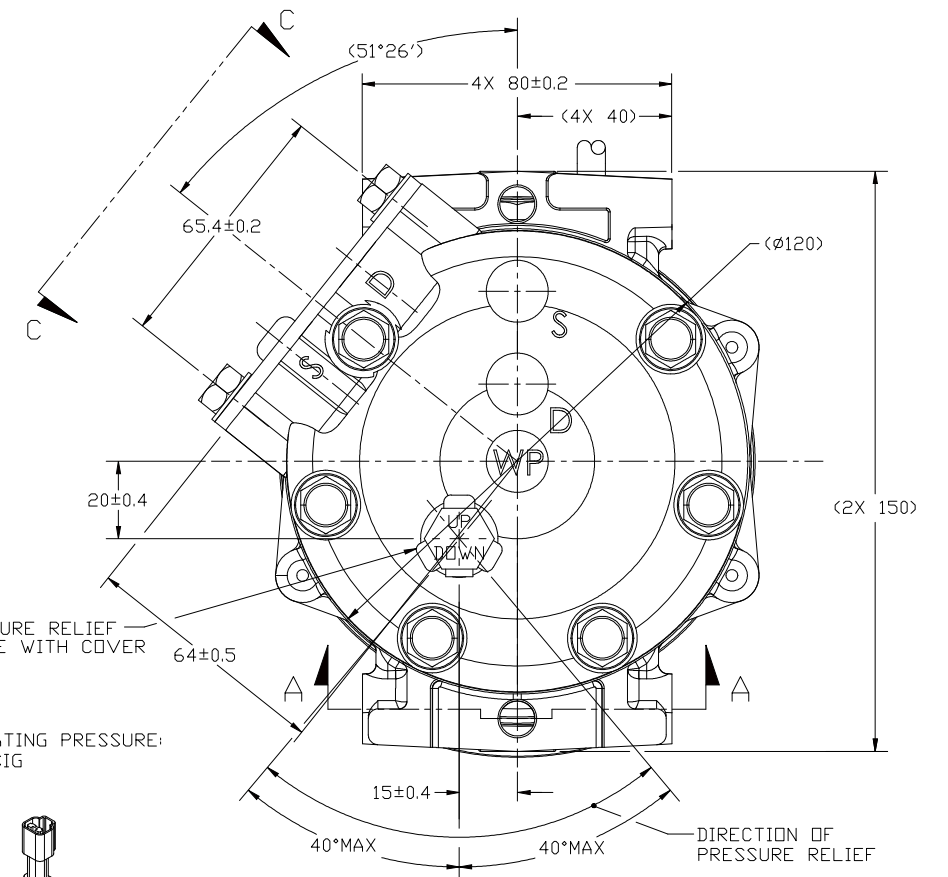
SECTION D-D
VIEW ROTATED 51°26' CW



NOTE:
1. CRITICAL CHARACTERISTIC.



VIEW SHOWN WITH SHIPPING PADS REMOVED



COMPRESSOR SPECIFICATIONS (REF)

DISPLACEMENT PER REVOLUTION	154.9 cc / rev. (9.5 cu. in./rev.)
MAXIMUM ALLOWABLE R.P.M.	8000 R.P.M.
MAXIMUM ALLOWABLE CONTINUOUS R.P.M.	6000 R.P.M.
REFRIGERANT	R134a
OIL (SP-15)	300 cc (10.1 fl. oz.)
WEIGHT	7.21 kg (15.89 lbs.)

CLUTCH SPECIFICATIONS (REF)

RATED VOLTAGE	DC 12V
BREAKAWAY TORQUE	3.5 kgf-m min. @ 12V
MINIMUM ENGAGEMENT VOLTAGE	7.5V @ AIR GAP 0.6mm REF
POWER CONSUMPTION	49 watts max.
BELT TYPE	PV4 TYPE
MAXIMUM ALLOWABLE BELT TENSION	120 kgf
PULLEY DIAMETER	ø119mm (4.68 in.)
CLUTCH TYPE	SEALED HEAVY DUTY

DO NOT SCALE

REV. LEVEL	RELEASED FOR ENGG DEVELOPMENT	<p>SANDEN INTERNATIONAL (U.S.A.), INC.</p>
DSGN	Dennis Lee 8/4/11	
DWN	Jenniss Lee 8/4/11	<p>SCALE REF 1:1 PLOTTED SCALE REF NONE METRIC</p> <p>This drawing and the information contained hereon are CONFIDENTIAL and PROPRIETARY to Sanden International (U.S.A.), Inc. and shall not be used, copied, or disclosed to others without the written permission of Sanden International (U.S.A.), Inc.</p>
CHK	J. Sokolowski	
APPV.	Hoden Farah	<p>INTERPRETATION OF THIS DRAWING PER ASME Y14.5M-1994</p>
DATE	8-11-11	
REV. LEVEL	RELEASED FOR DESIGN VALIDATION	<p>THIRD ANGLE PROJECTION</p>
DSGN	Dennis Lee 8/10/11	
APPV.	Hoden Farah	<p>MATERIAL:</p>
DATE	8-11-11	
REV. LEVEL	RELEASED FOR PRODUCTION VAL'D.	<p>NAME</p> <p>ENHANCED CAPACITY COMPRESSOR</p>
DSGN	Dennis Lee 8/10/11	
APPV.	Hoden Farah	<p>DWG. NO.</p> <p>4104-6000</p>
DATE	8-11-11	
REV. LEVEL	RELEASED FOR PRODUCTION	<p>REV</p> <p>A</p>
DSGN	Dennis Lee 8/10/11	