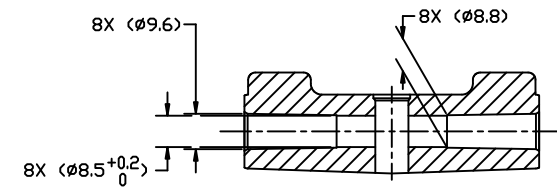
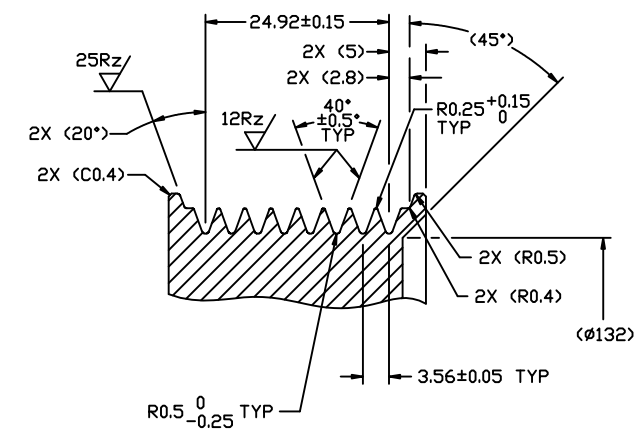


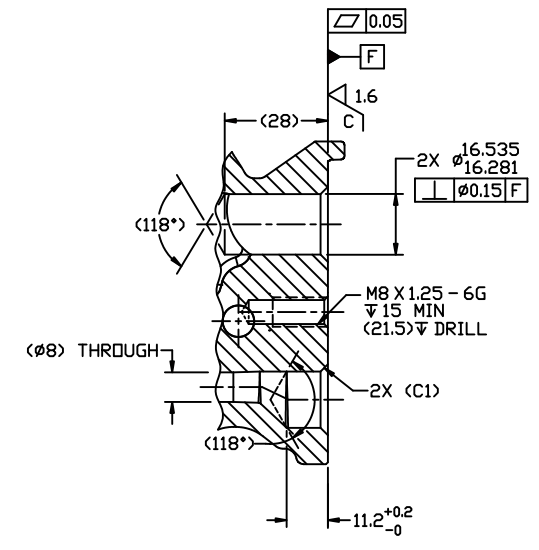
PCDN	REV.	APPV.	DATE	REVISIONS	DWN	DSGN	CHK	APPV.
				INITIAL ISSUE REFERENCE 4802-6000 REVISION F.				



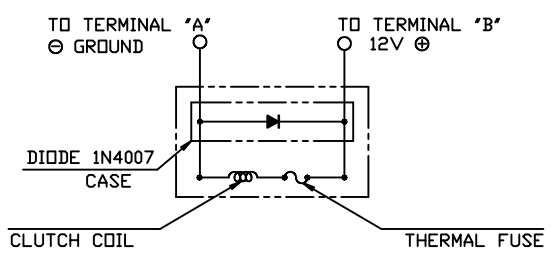
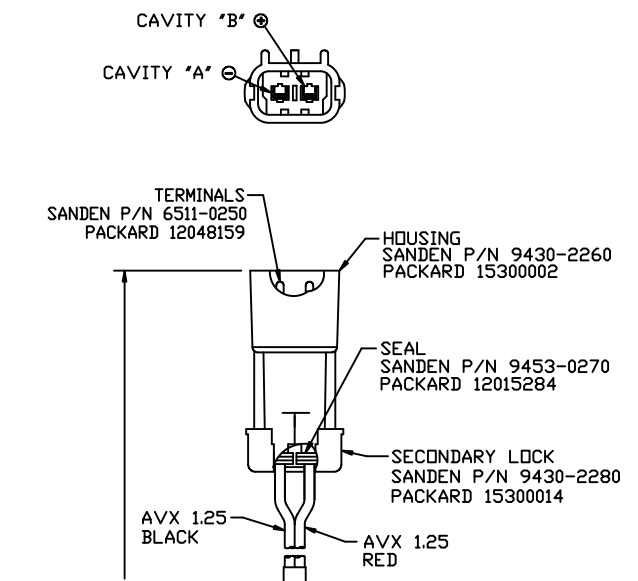
SECTION A-A



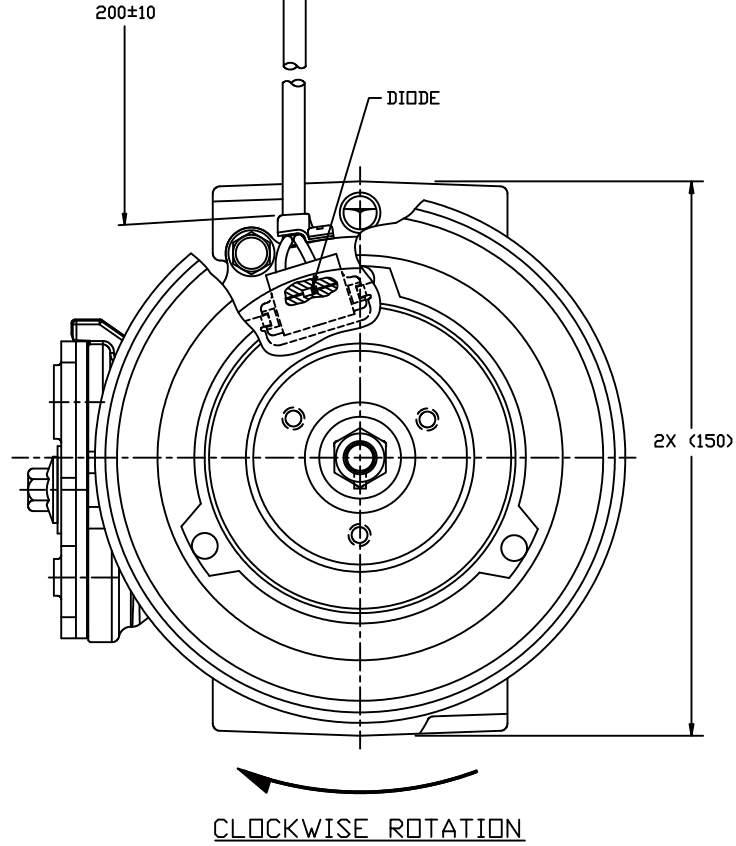
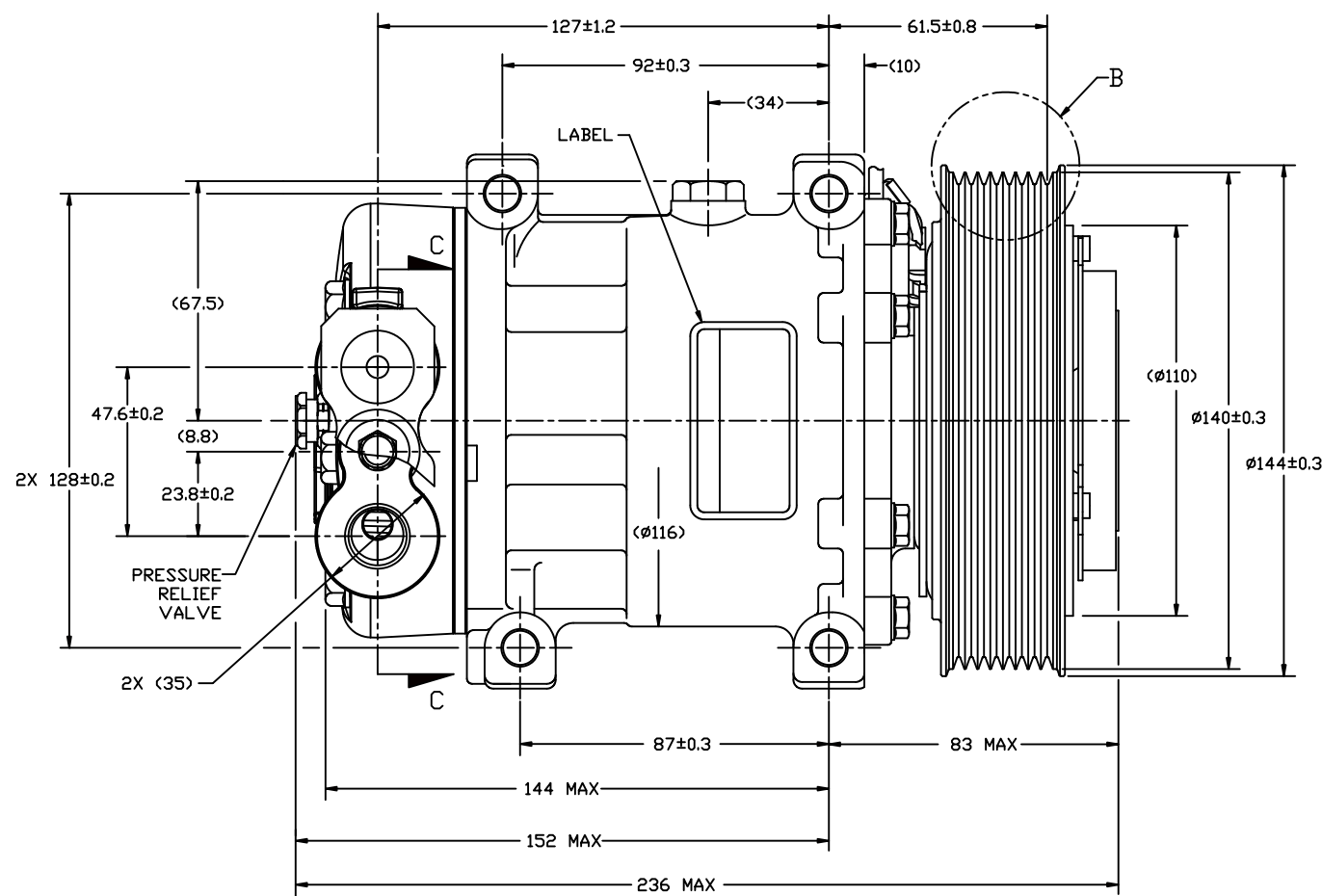
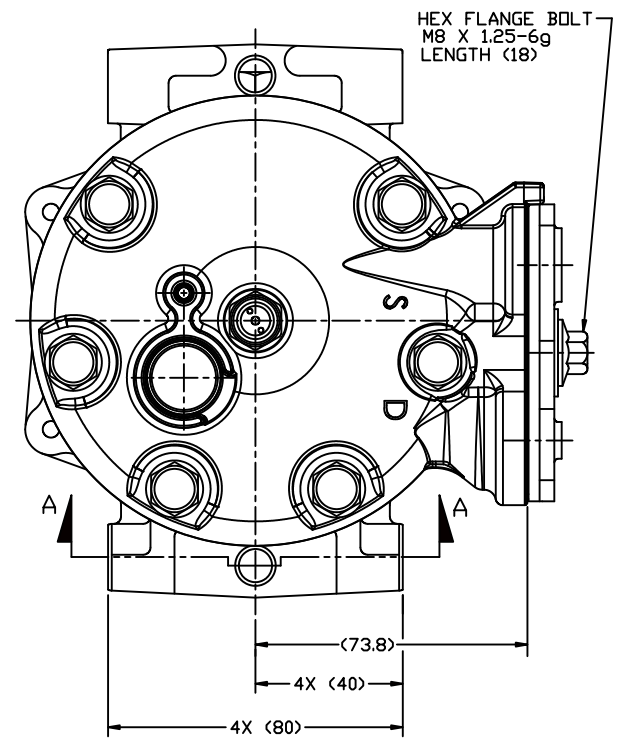
DETAIL B  
SCALE 2:1



SECTION C-C  
(SHIPPING PAD AND BOLT REMOVED)



CIRCUIT DIAGRAM  
(FOR REFERENCE)



COMPRESSOR SPECIFICATIONS (REF.)

DISPLACEMENT PER REVOLUTION	154.9 cc / rev. ( 9.5cu.in. / rev. )
MAXIMUM ALLOWABLE R.P.M.	8000 R.P.M.
MAXIMUM ALLOWABLE CONTINUOUS R.P.M.	6000 R.P.M.
REFRIGERANT	R134a
OIL ( SP-15 )	300 cc ( 10.1 floz. )
WEIGHT	8.548 kg ( 18.85 lb. )

CLUTCH SPECIFICATIONS (REF.)

RATED VOLTAGE	DC 12V
BREAKAWAY TORQUE	3.5 kgf-m min. @ 12V
MINIMUM ENGAGEMENT VOLTAGE	7.5V @ AIR GAP 0.6mm
POWER CONSUMPTION	49 watts max.
BELT TYPE	PV8 TYPE
MAXIMUM ALLOWABLE BELT TENSION	120 kgf
PULLEY DIAMETER	Ø140 mm ( 5.51 in. )
CLUTCH TYPE	HEAVY DUTY

NOTE:  
1. DIMENSIONS ARE TO VIRTUAL SHARP CORNERS UNLESS OTHERWISE SPECIFIED.

DO NOT SCALE

REV. LEVEL	RELEASED FOR ENG. DEVELOPMENT	<p>SANDEN INTERNATIONAL ( U.S.A. ), INC.</p> <p>DRAWN SCALE REF 1:1 PLOTTED SCALE REF: NONE METRIC</p> <p>This drawing and the information contained hereon are CONFIDENTIAL and PROPRIETARY to Sanden International (U.S.A.), Inc., and shall not be used, copied, or disclosed to others without the written permission of Sanden International (U.S.A.), Inc.</p>	SIZE	
A	DSGN: <i>T. Burns</i> DWN: <i>T. Burns</i> CHK: <i>J. Chan</i> APPV: <i>R. Marling</i> DATE: 4/17/12		INTERPRETATION OF THIS DRAWING PER ASME Y14.5M-1994	D
A	DSGN: <i>T. Burns</i> APPV: <i>R. Marling</i> DATE: 4/17/12		THIRD ANGLE PROJECTION	
A	DSGN: <i>T. Burns</i> APPV: <i>R. Marling</i> DATE: 4/17/12		MATERIAL:	
A	RELEASED FOR PRODUCTION	NAME:	COMPRESSOR	
A	DSGN: <i>T. Burns</i> APPV: <i>R. Marling</i> DATE: 4/17/12	DWG. NO.:	4108-6000	
A	RELEASED FOR PRODUCTION	REV.:	A	