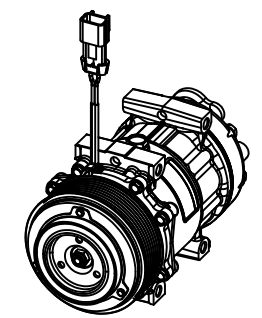
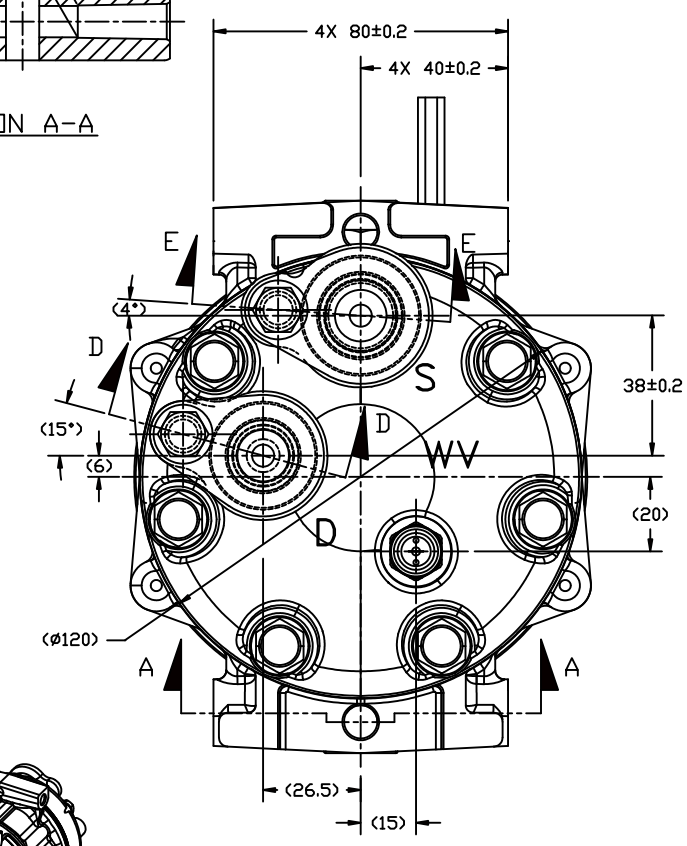
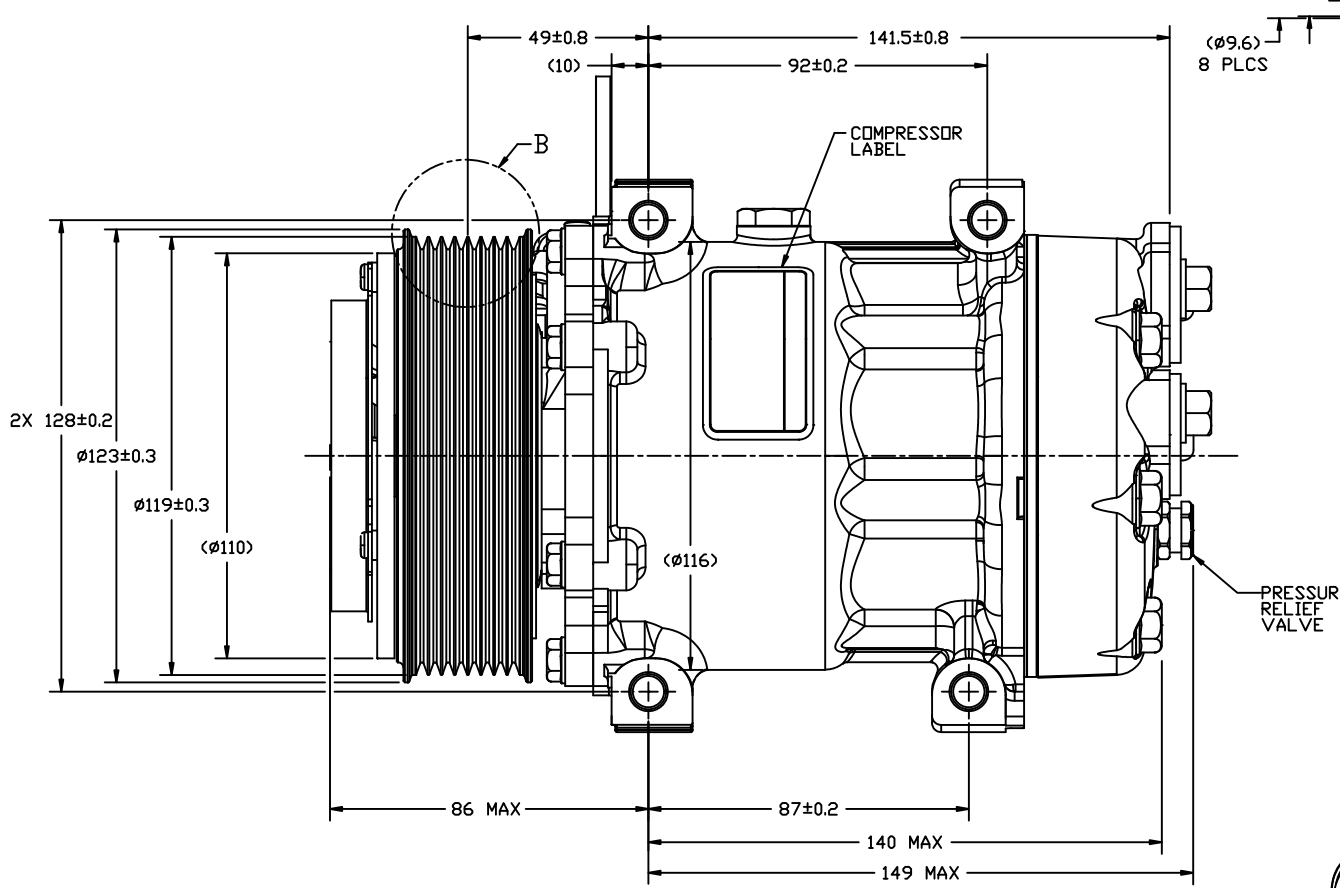
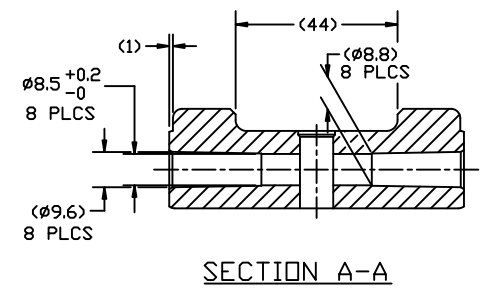
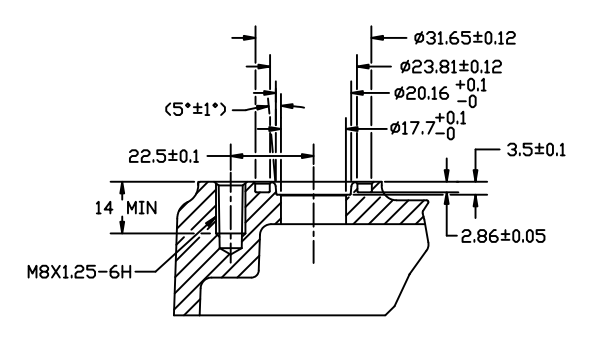
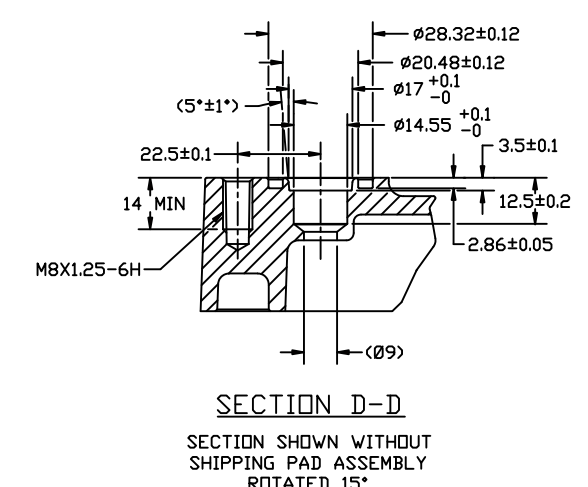
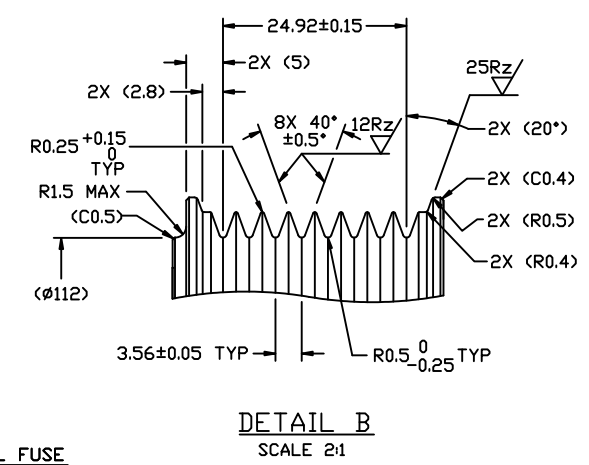
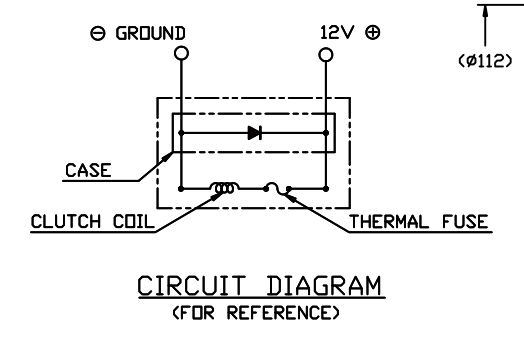
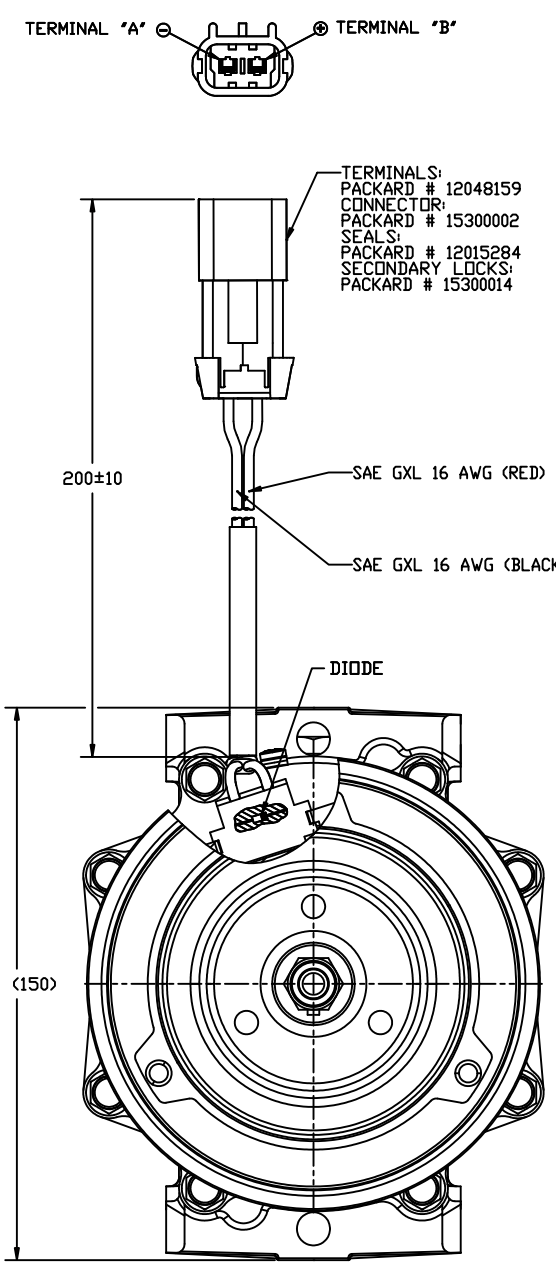


PCDN	REV.	APPV. DATE	REVISIONS	DVN	DSGN	CHK	APPV.
	1		INITIAL RELEASE REFERENCE 4581-6000 REVISION A				



COMPRESSOR SPECIFICATIONS (REF)

DISPLACEMENT PER REVOLUTION	154.9 cc / rev. (9.5cu.in. / rev.)
MAXIMUM ALLOWABLE R.P.M.	8000 R.P.M.
MAXIMUM ALLOWABLE CONTINUOUS R.P.M.	6000 R.P.M.
REFRIGERANT	R134a
OIL (SP-15)	300 cc (10.1 fl.oz.)
WEIGHT	7.402 kg (16.32 lb)
PRV OPENING PRESSURE RANGE	508 - 595 PSIG

CLUTCH SPECIFICATIONS (REF)

RATED VOLTAGE	DC 12V
BREAKAWAY TORQUE	3.5 kgf-m min. @ 12V
MINIMUM ENGAGEMENT VOLTAGE	7.5V @ AIR GAP 0.6mm
POWER CONSUMPTION	49 watts max.
BELT TYPE	PV8
MAXIMUM ALLOWABLE BELT TENSION	120 Kgf
PULLEY DIAMETER	Ø119mm (4.69 in.)
CLUTCH TYPE	SUPER HEAVY DUTY

DO NOT SCALE

REV. LEVEL	RELEASED FOR	DATE	DESCRIPTION
A	DESIGN	7/1/88	RELEASED FOR ENG. DEVELOPMENT
A	APPV.	4/23/12	RELEASED FOR PRODUCTION
A	APPV.	4/23/12	RELEASED FOR PRODUCTION
A	APPV.	4/23/12	RELEASED FOR PRODUCTION

SANDEN
SANDEN INTERNATIONAL (U.S.A.), INC.

DRAWN SCALE REF 1:1 PLOTTED SCALE REF 1:1 METRIC

This drawing and the information contained herein are CONFIDENTIAL and PROPRIETARY to Sanden International (U.S.A.), Inc., are released in CONFIDENCE and shall not be used, copied, or disclosed to others without the written permission of Sanden International (U.S.A.), Inc.

INTERPRETATION OF THIS DRAWING PER ASME Y14.5M-1994

THIRD ANGLE PROJECTION

MATERIAL:

NAME: **COMPRESSOR**

DWG. NO. 4110-6000

REV. A