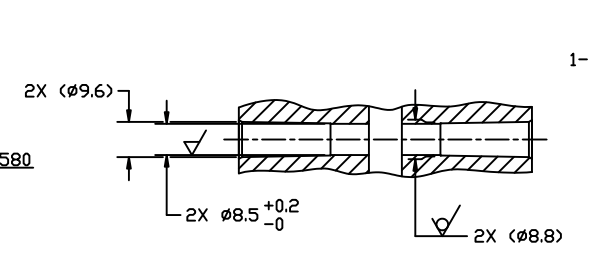
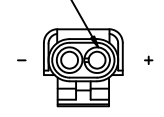


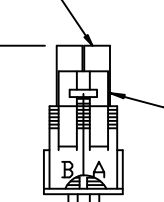
REV.	DATE	BY	CHK	APPV.
1				

TERMINALS: PACKARD # 12124580

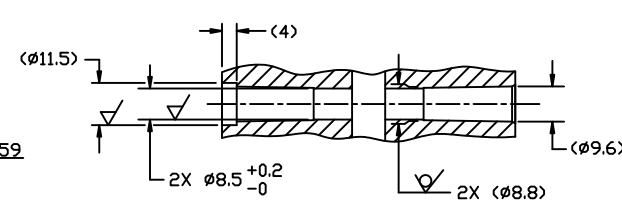


SECTION B-B
2 PLACES

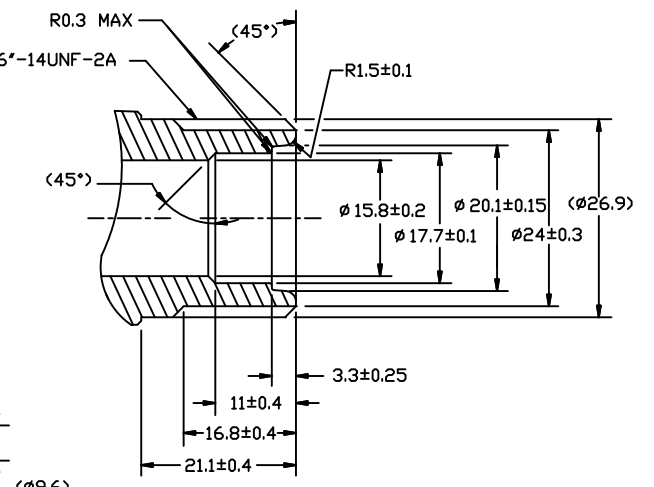
HOUSING: PACKARD # 12015792



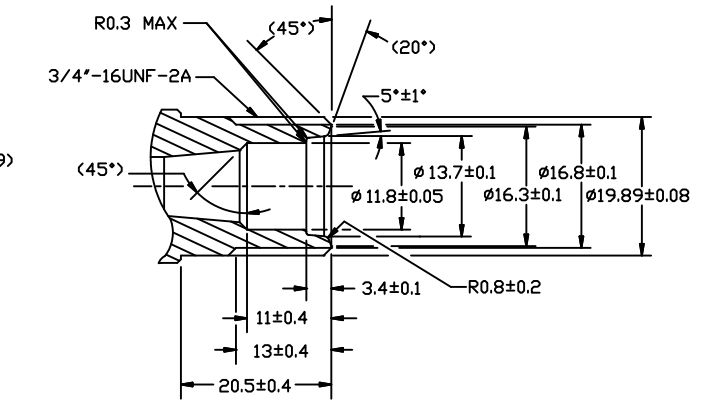
SEAL: PACKARD # 12015359



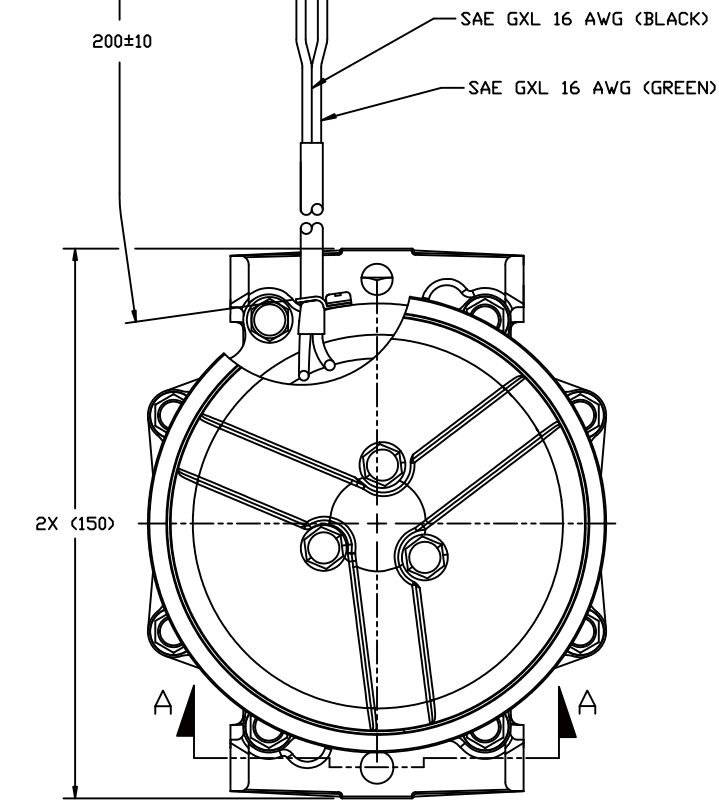
SECTION A-A
2 PLACES



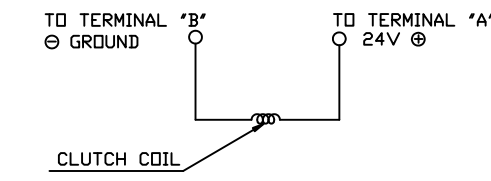
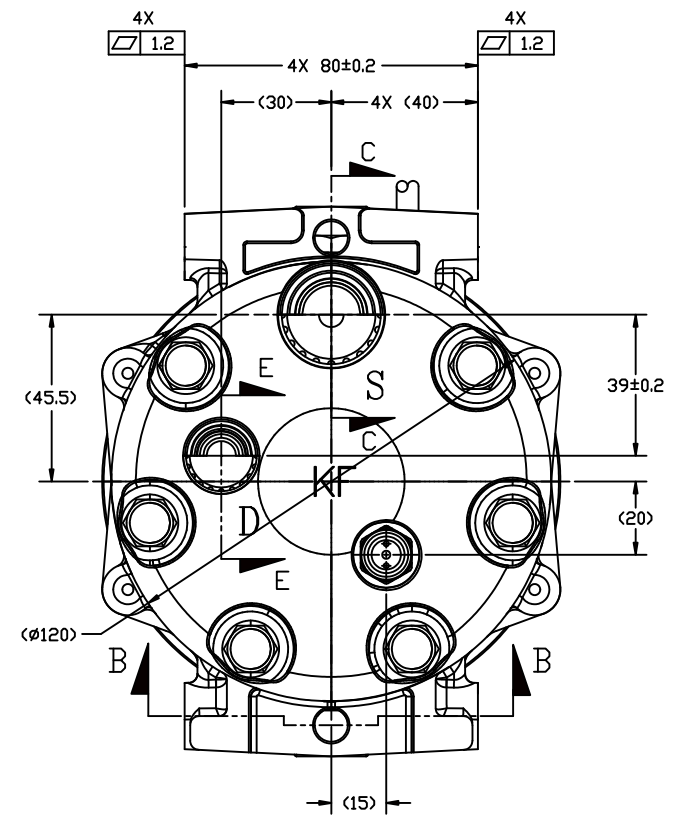
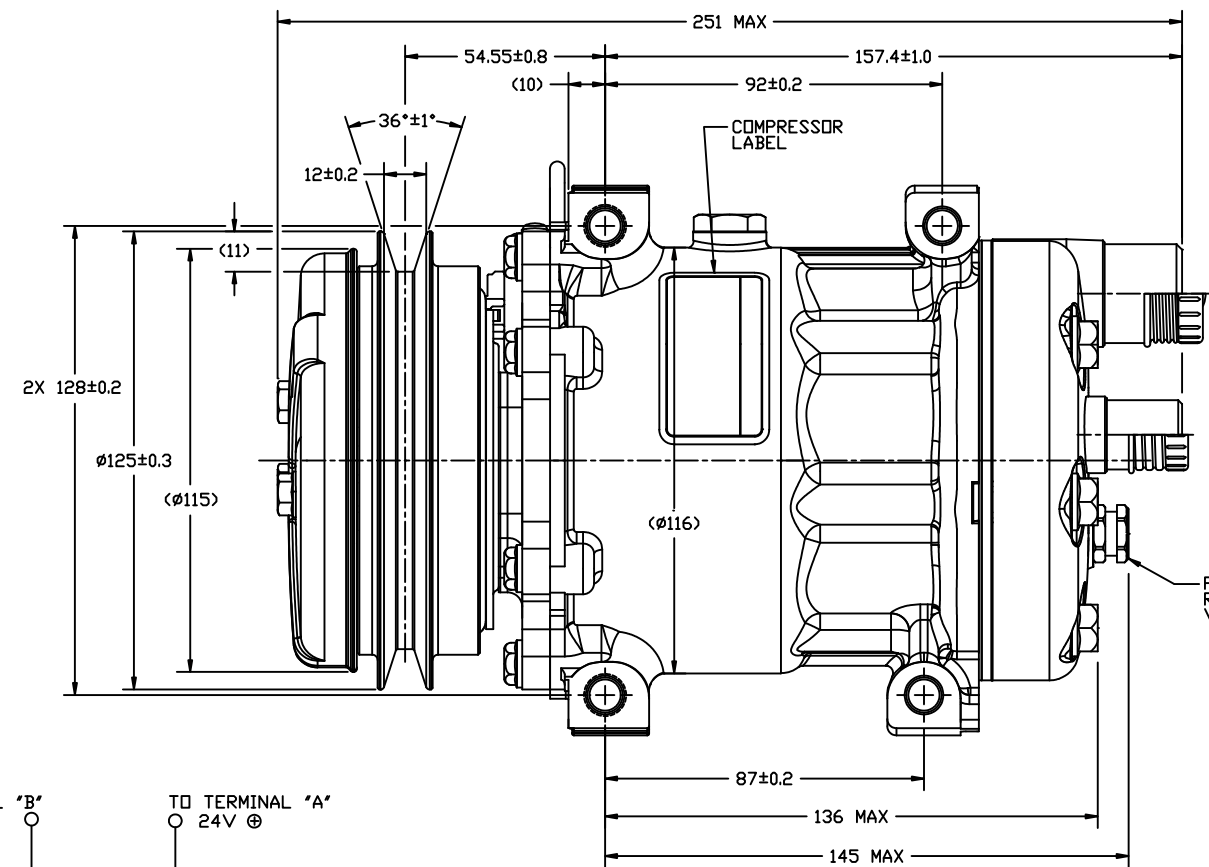
SECTION C-C
SCALE: 2:1
(SECTION SHOWN WITH SEAL CAP REMOVED)



SECTION E-E
SCALE: 2:1
(SECTION SHOWN WITH SEAL CAP REMOVED)



CLOCKWISE ROTATION

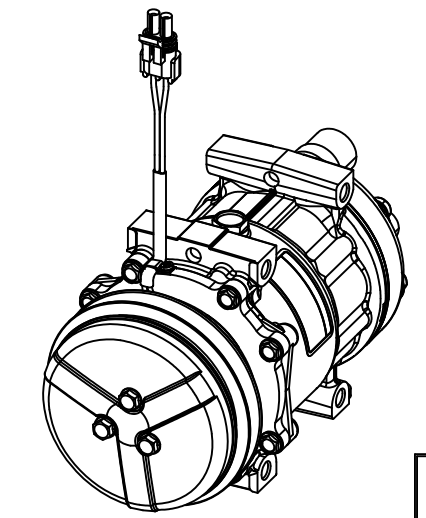


COMPRESSOR SPECIFICATIONS (REF)

DISPLACEMENT PER REVOLUTION	154.9 cc / rev. (9.5cu.in. / rev.)
MAXIMUM ALLOWABLE R.P.M.	5000 R.P.M.
MAXIMUM ALLOWABLE CONTINUOUS R.P.M.	5000 R.P.M.
REFRIGERANT	R134a
OIL (SP-15)	300 ±10 cc (10.1 fl.oz.)
COMPRESSOR WEIGHT	7.338 kg (16.18 lb)

CLUTCH SPECIFICATIONS (REF)

RATED VOLTAGE	DC 24V
BREAKAWAY TORQUE	3.5 kgf-m min. @ 24V
MINIMUM ENGAGEMENT VOLTAGE	16V @ AIR GAP 0.6mm
POWER CONSUMPTION	34 watts max.
BELT TYPE	A1
MAXIMUM ALLOWABLE BELT TENSION	60 kgf per Belt
PULLEY DIAMETER	Ø125mm (4.92 in.)
CLUTCH TYPE	HEAVY DUTY



DO NOT SCALE

REV. LEVEL	DATE	BY	CHK	APPV.
A	4/23/12	J. Jones	J. Jones	J. Jones
A	4/23/12	J. Jones	J. Jones	J. Jones
A	4/23/12	J. Jones	J. Jones	J. Jones
A	4/23/12	J. Jones	J. Jones	J. Jones

RELEASED FOR PRODUCTION VAL'D.		MATERIAL:	
DRAWN SCALE REF 1:1		PLOTTED SCALE REF 1:1	
<p>SANDEN</p> <p>SANDEN INTERNATIONAL (U.S.A.), INC.</p> <p>THIS DRAWING AND THE INFORMATION CONTAINED HEREON ARE CONFIDENTIAL AND PROPRIETARY TO SANDEN INTERNATIONAL (U.S.A.), INC. AND SHALL NOT BE USED, COPIED, OR DISCLOSED TO OTHERS WITHOUT THE WRITTEN PERMISSION OF SANDEN INTERNATIONAL (U.S.A.), INC.</p>			
INTERPRETATION OF THIS DRAWING PER ASME Y14.5M-1994		THIRD ANGLE PROJECTION	
NAME COMPRESSOR SD7H15 ENHANCED CAPACITY		SIZE D	
DWG. NO. 4111-6000		REV. A	