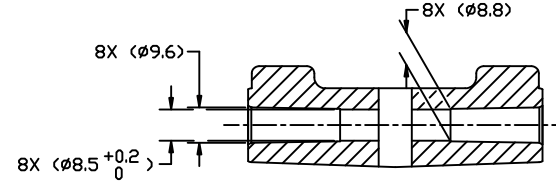
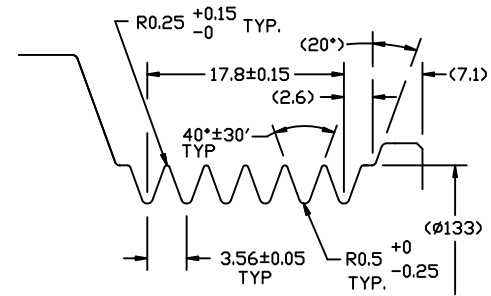


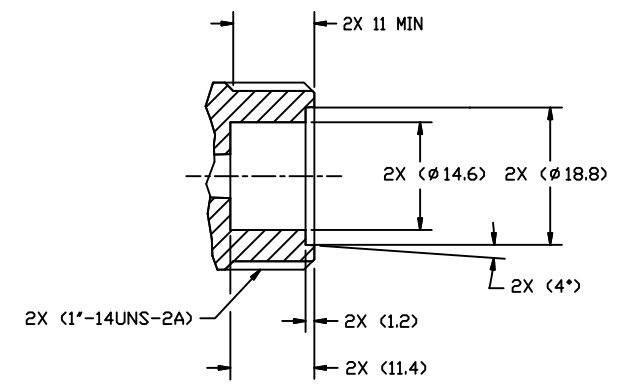
PDCN	REV.	APPV DATE	REVISIONS	DWN	DSGN	CHK	APPV
	△		INITIAL RELEASE REFERENCE 4578-6000 REVISION C.				



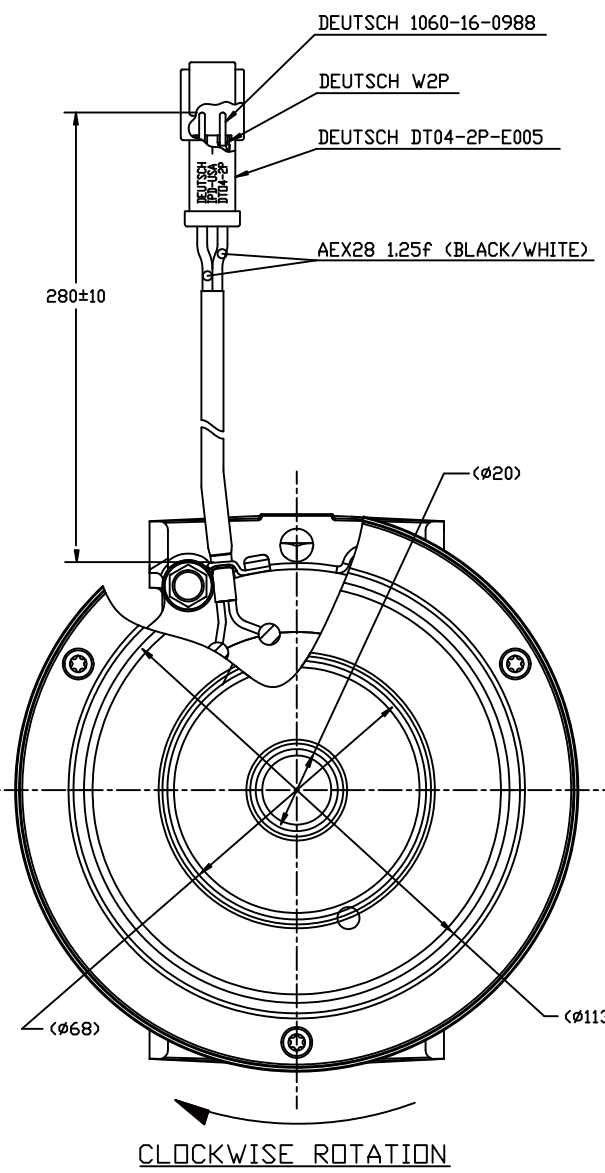
SECTION A-A



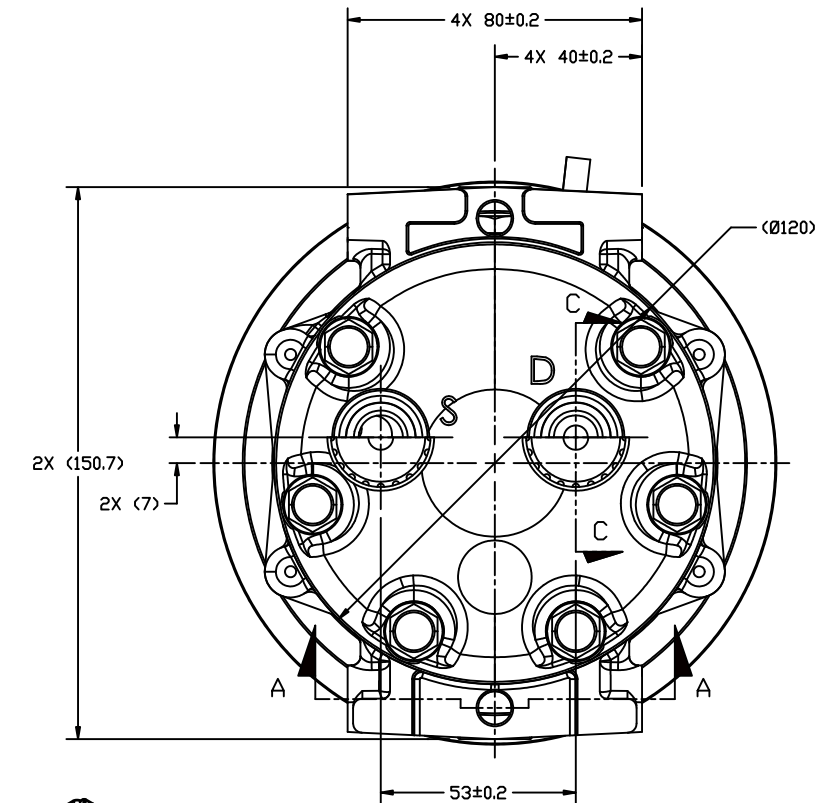
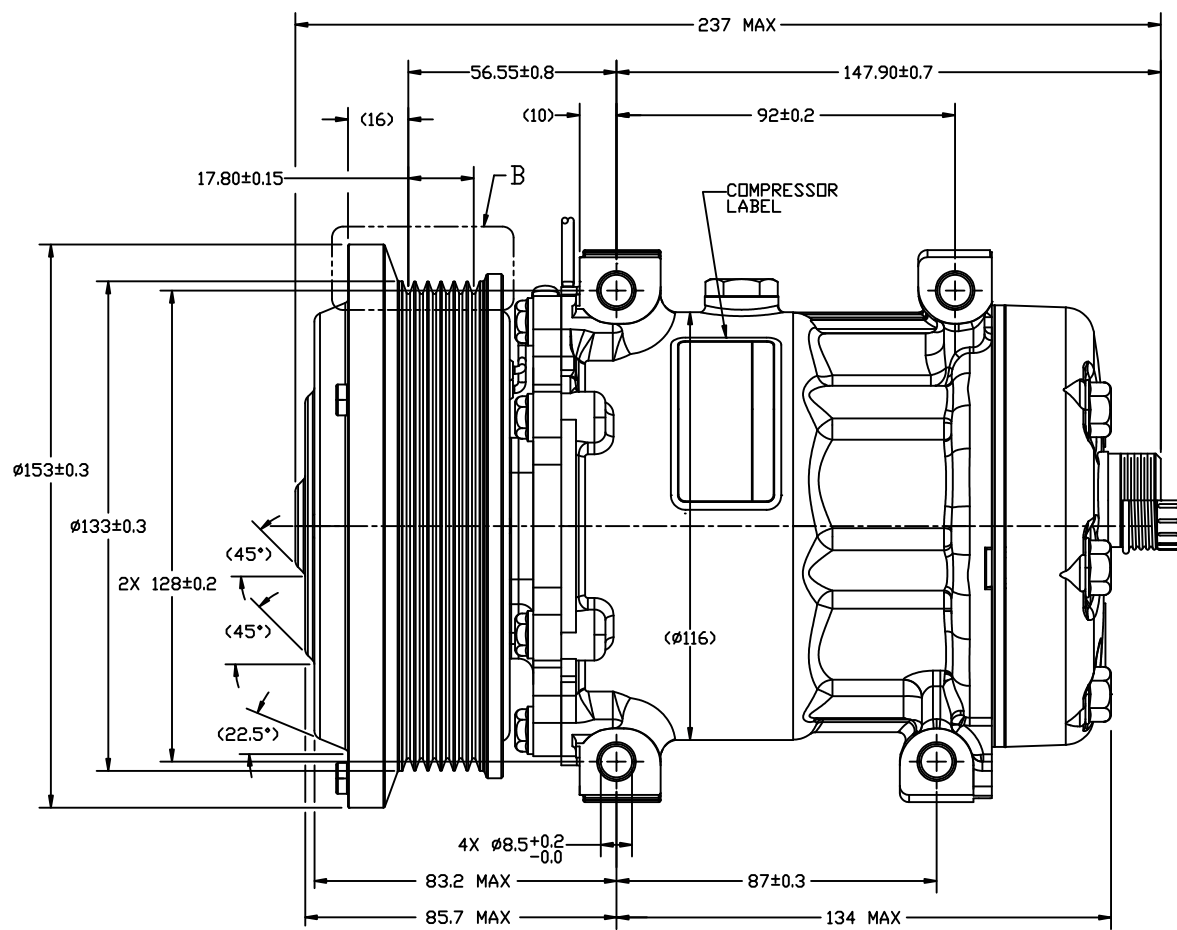
DETAIL B
SCALE: 3:1



SECTION C-C
SCALE: 2:1
TYPICAL BOTH PORTS
(SECTION SHOWN WITH SEAL CAP REMOVED)



CLOCKWISE ROTATION

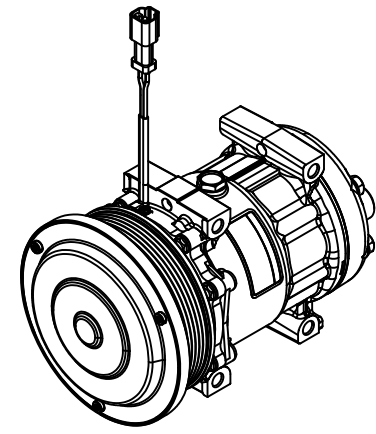


COMPRESSOR SPECIFICATIONS (REF)

DISPLACEMENT PER REVOLUTION	154.9 cc / rev. (9.5cu.in. / rev.)
MAXIMUM ALLOWABLE R.P.M.	4000 R.P.M.
MAXIMUM ALLOWABLE CONTINUOUS R.P.M.	4000 R.P.M.
REFRIGERANT	R134a
OIL (SP-15)	300±10 cc (10.13 fl.oz.)
COMPRESSOR WEIGHT	8.820 kg (19.44 lb)

CLUTCH SPECIFICATIONS (REF)

RATED VOLTAGE	DC 12V
BREAKAWAY TORQUE	3.5 kgf-m min. @ 12V
MINIMUM ENGAGEMENT VOLTAGE	7.5V @ AIR GAP 0.6mm
POWER CONSUMPTION	49 watts max.
BELT TYPE	PV6
MAXIMUM ALLOWABLE BELT TENSION	120 kgf
PULLEY DIAMETER	ø133mm (5.24 in.)
CLUTCH TYPE	SEALED HEAVY DUTY



DO NOT SCALE

REV. LEVEL	RELEASED FOR ENGG DEVELOPMENT	<p>SANDEN INTERNATIONAL (U.S.A.) , INC.</p>	SCALE REF	1:1	PLOTTED SCALE REF	1:1	METRIC
DSGN	J. Oshiro		DRAWN	J. Oshiro	CHK	J. Oshiro	APPV.
APPV.	A. Masuda	This drawing and the information contained hereon are CONFIDENTIAL and PROPRIETARY to Sanden International (U.S.A.), Inc. and shall not be used, copied, or disclosed to others without the written permission of Sanden International (U.S.A.), Inc.					
DATE	4/28/12	INTERPRETATION OF THIS DRAWING PER ASME Y14.5M-1994					
REV. LEVEL	RELEASED FOR DESIGN VALIDATION	THIRD ANGLE PROJECTION					
DSGN	J. Oshiro	MATERIAL:					
APPV.	A. Masuda	NAME					
DATE	4/28/12	COMPRESSOR					
REV. LEVEL	RELEASED FOR PRODUCTION VAL. B.	DWG. NO.					
DSGN	J. Oshiro	4112-6000					
APPV.	A. Masuda	REV					
DATE	4/28/12	A					