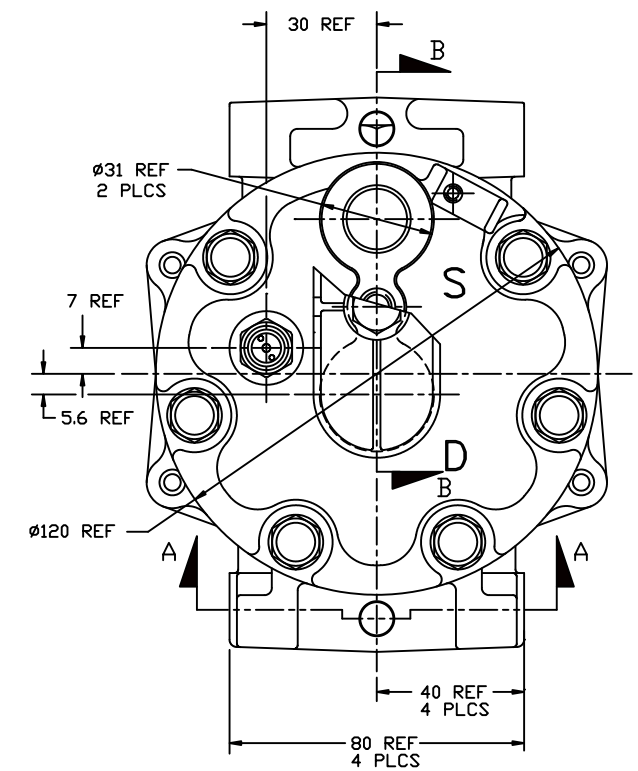
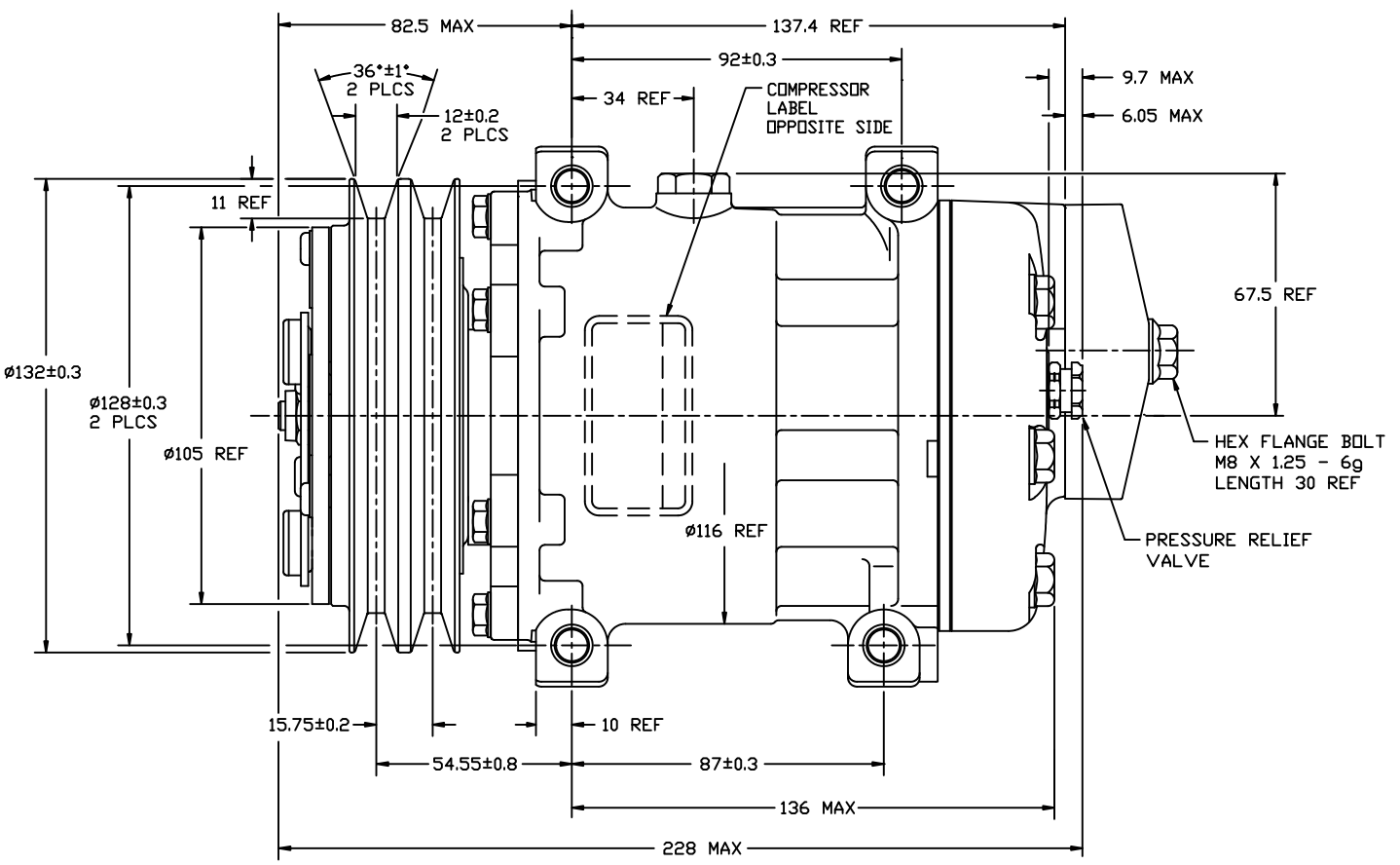
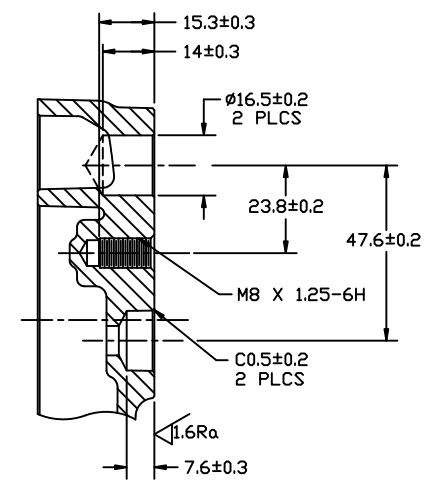
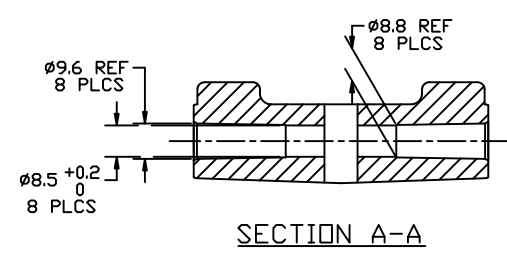
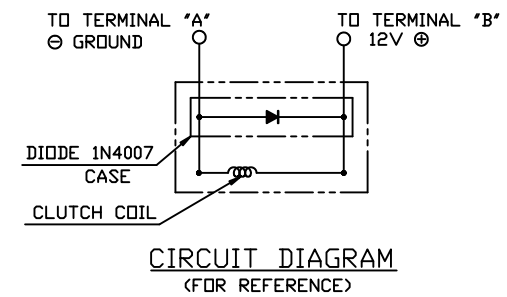
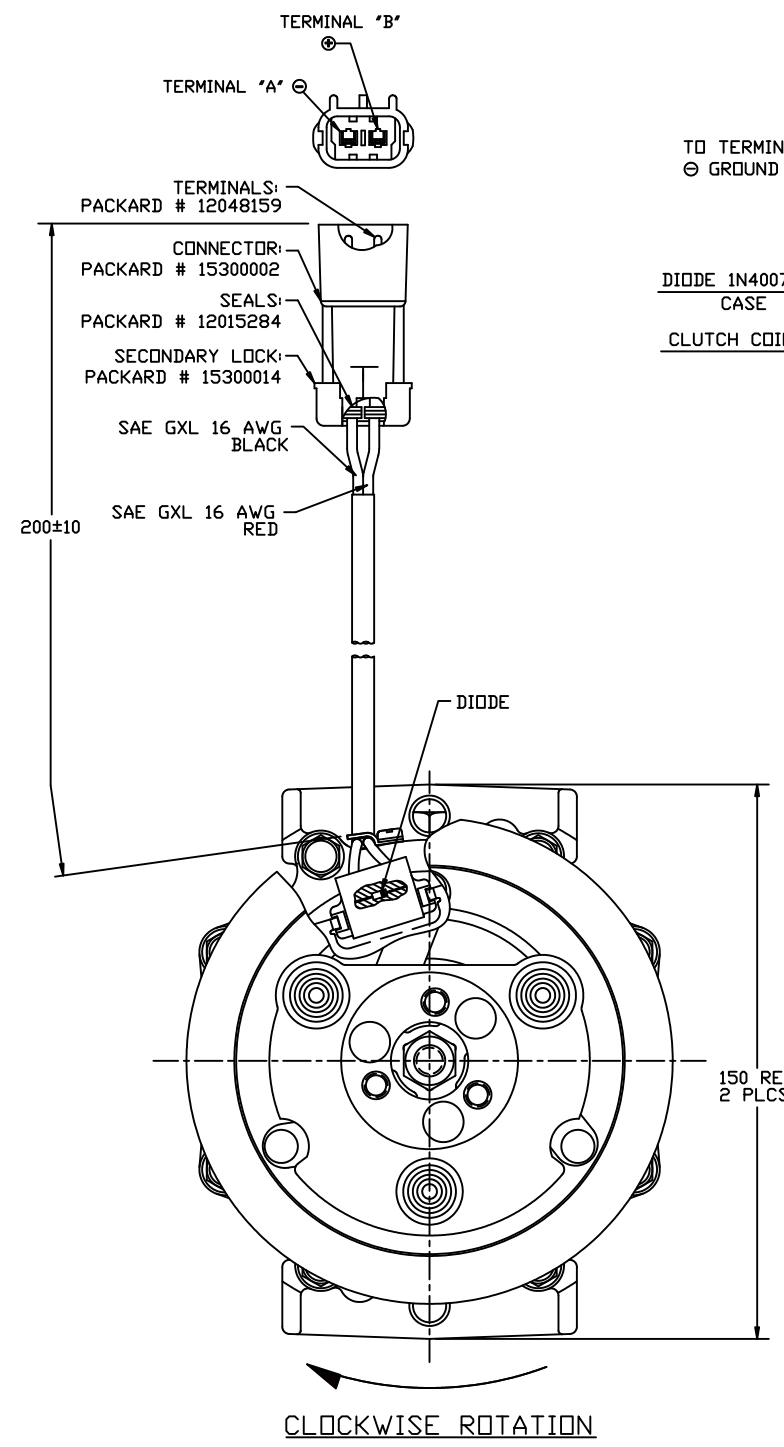


PDCN	REV.	APPV DATE	REVISIONS	DWN	DSGN	CHK	APPV
			INITIAL RELEASE REFERENCE 4538-6000 REVISION C.				



COMPRESSOR SPECIFICATIONS (REF)

DISPLACEMENT PER REVOLUTION	154.9 cc / rev. (9.5cu.in. / rev.)
MAXIMUM ALLOWABLE R.P.M.	8000 R.P.M.
MAXIMUM ALLOWABLE CONTINUOUS R.P.M.	6000 R.P.M.
REFRIGERANT	R134a
OIL (SP-15)	300 cc (10.1 fl.oz.)
WEIGHT	7.411 kg (16.34 lb)

CLUTCH SPECIFICATIONS (REF)

RATED VOLTAGE	DC 12V
BREAKAWAY TORQUE	3.5 kgf-m min. @ 12V
MINIMUM ENGAGEMENT VOLTAGE	7.5V @ AIR GAP 0.6mm
POWER CONSUMPTION	49 watts max.
BELT TYPE	A TYPE
MAXIMUM ALLOWABLE BELT TENSION	60 kgf per belt
PULLEY DIAMETER	$\phi 132\text{mm}$ (5.2 in.)
CLUTCH TYPE	HEAVY DUTY

DO NOT SCALE

REV. LEVEL	RELEASED FOR ENG. DEVELOPMENT	<p>SANDEN INTERNATIONAL (U.S.A.), INC.</p> <p>DRAWN SCALE REF 1:1 PLOTTED SCALE REF NONE METRIC</p> <p>This drawing and the information contained hereon are CONFIDENTIAL and PROPRIETARY to Sanden International (U.S.A.), Inc., are received in CONFIDENCE and shall not be used, copied, or disclosed to others without the written permission of Sanden International (U.S.A.), Inc.</p>	SIZE	
A	DSGN: T. Jones		<p>INTERPRETATION OF THIS DRAWING PER ASME Y14.5M-1994</p> <p>THIRD ANGLE PROJECTION</p>	D
A	APPV: A. Whiting			
A	DATE: 4/23/12		NAME	COMPRESSOR
REV. LEVEL	RELEASED FOR PRODUCTION VAL'D.	MATERIAL		
A	DSGN: T. Jones			
A	APPV: A. Whiting			
A	DATE: 4/23/12			
REV. LEVEL	RELEASED FOR PRODUCTION	DWG. NO.	4113-6000	
A	DSGN: T. Jones	REV	A	
A	APPV: A. Whiting			
A	DATE: 4/23/12			