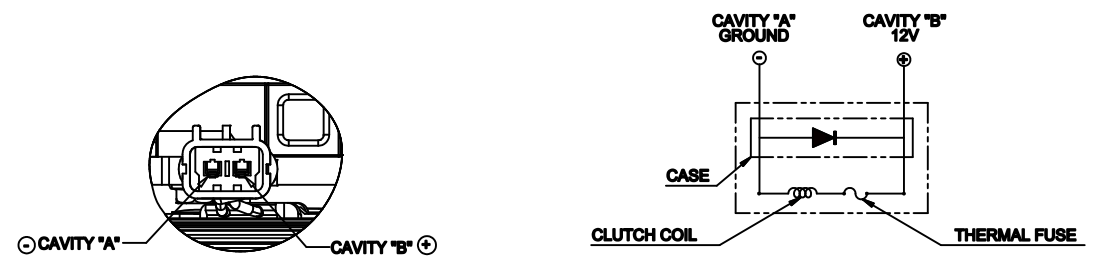
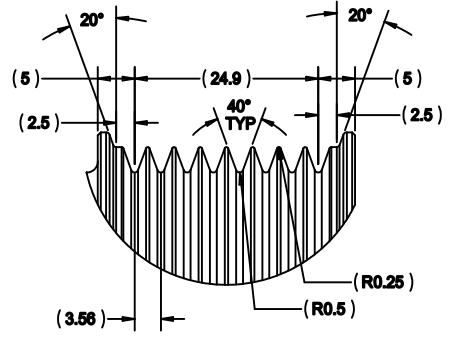


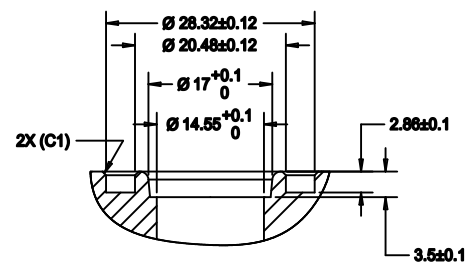
PCDN	REV.	APPV	REVISIONS	DWN	DGN	CHK	APPV
			INITIAL ISSUE REFERENCE 4117-6000 REVISION C.				



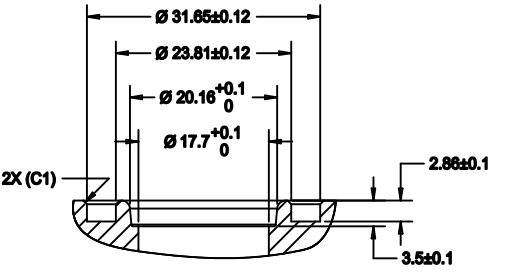
CIRCUIT DIAGRAM
(FOR REFERENCE)



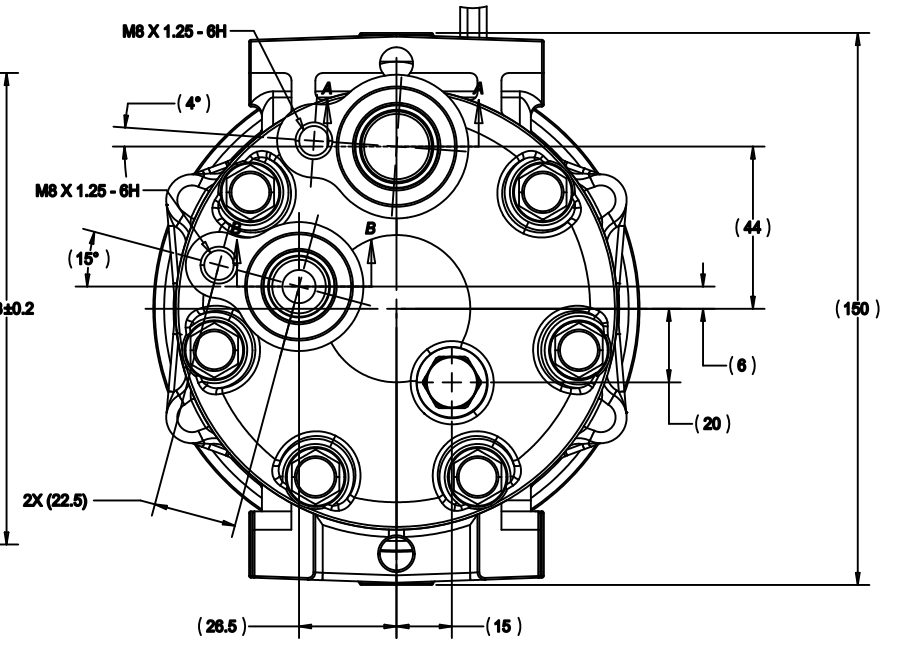
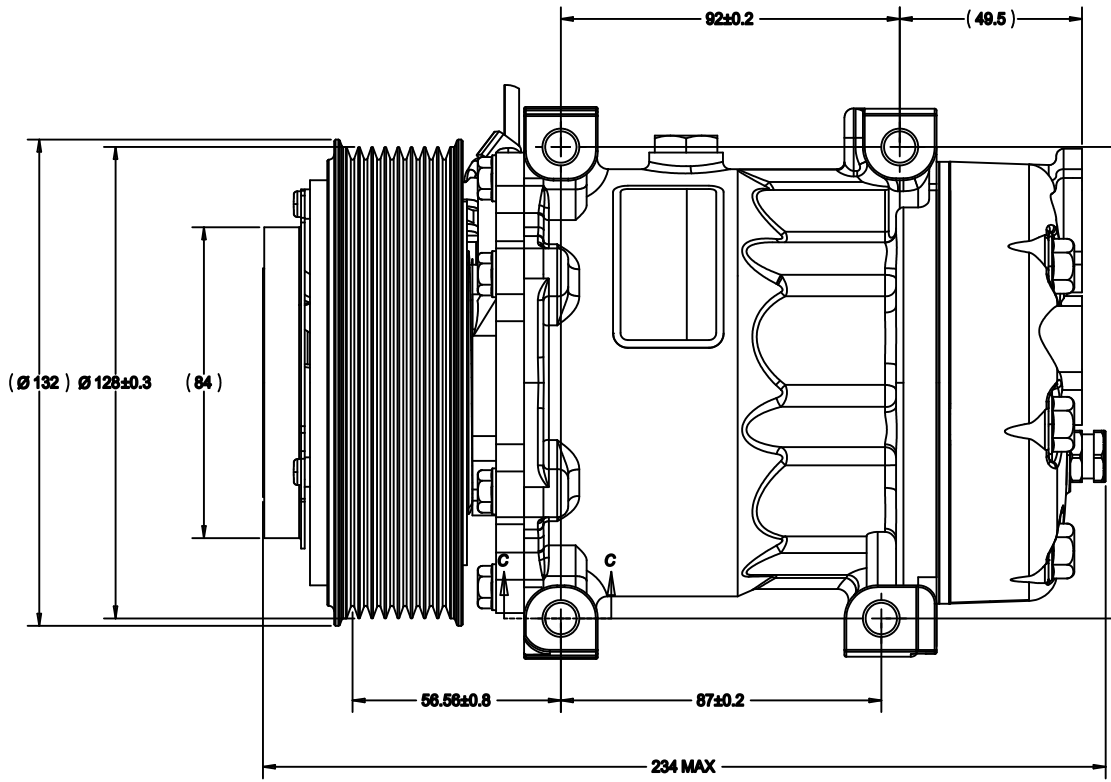
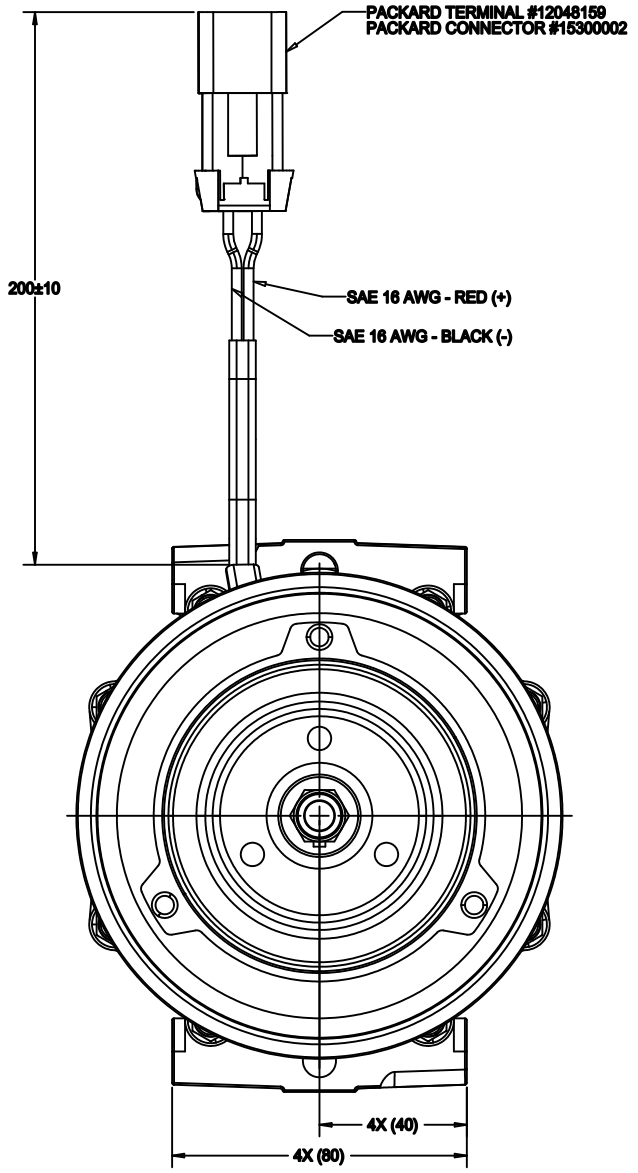
DETAIL D
SCALE 2:1



SECTION B-B
SCALE 2:1

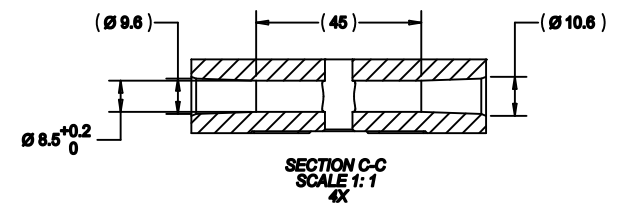


SECTION A-A
SCALE 2:1



COMPRESSOR SPECIFICATIONS (REFERENCE)	
DISPLACEMENT PER REVOLUTION	154.9 cc
MAXIMUM ALLOWABLE RPM	8000 RPM
MAXIMUM ALLOWABLE CONTINUOUS RPM	6000 RPM
REFRIGERANT	R134a
SP-15 OIL QUANTITY	300±10 cc
WEIGHT	7.792 kg (17.18 lb)

CLUTCH SPECIFICATIONS (REFERENCE)	
RATED VOLTAGE	12V
BREAKAWAY TORQUE	34 N·m
MINIMUM ENGAGEMENT VOLTAGE	7.5V @ 0.6 mm AIR GAP
MAXIMUM POWER CONSUMPTION	49 W
BELT TYPE	PV8
MAXIMUM ALLOWABLE BELT TENSION	1176 N
PULLEY DIAMETER	Ø 128 mm
CLUTCH TYPE	SUPER HEAVY DUTY



SECTION C-C
SCALE 1:1
4X

REV. A	DESIGNED FOR PRODUCTION	<p>SANDEN METRIC DIMENSIONS SHOWN IN MILLIMETERS UNLESS OTHERWISE SPECIFIED.</p> <p>This drawing and the information contained hereon are CONFIDENTIAL and PROPRIETARY to Sanden International (U.S.A.), Inc. and shall not be used, copied, or disclosed to others without the written permission of Sanden International (U.S.A.), Inc.</p>	SIZE
APPV. A	DESIGN VALIDATION		THIRD ANGLE PROJECTION
DGN. A	DESIGNED FOR PRODUCTION		MATERIAL
DATE 7/23/12			NAME
<p>INTERPRETATION OF THIS DRAWING PER: ASME Y14.5M-1994</p>		COMPRESSOR	REV. A
<p>DATE 7/23/12</p>		DWG. NO. 4117-6000	