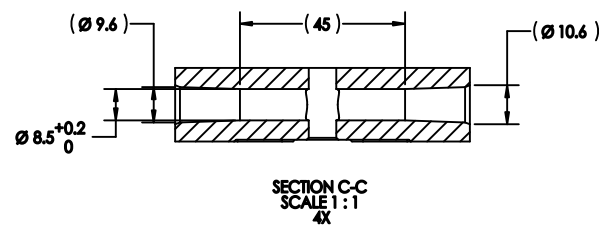
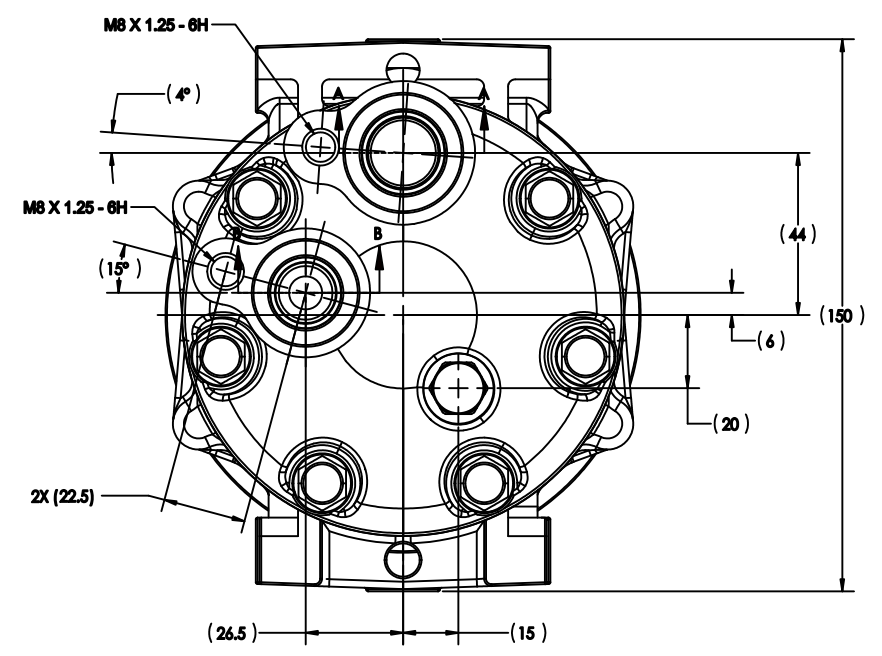
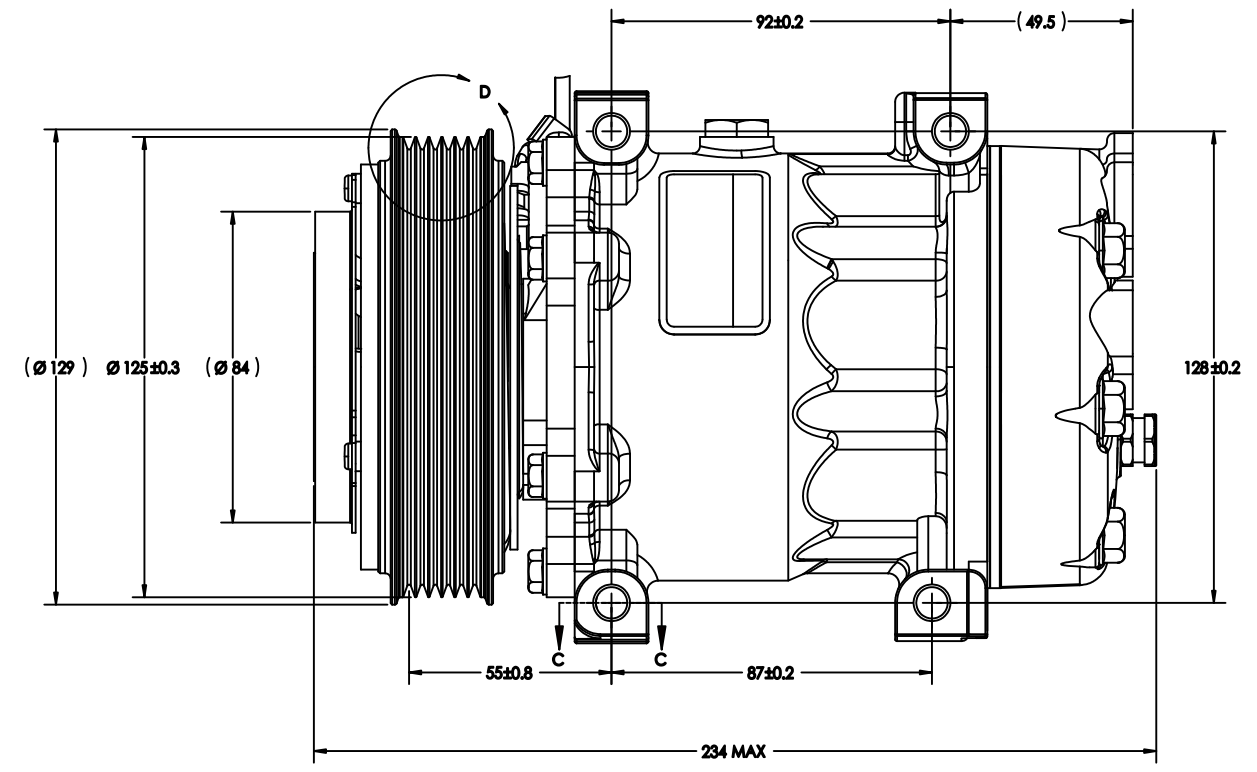
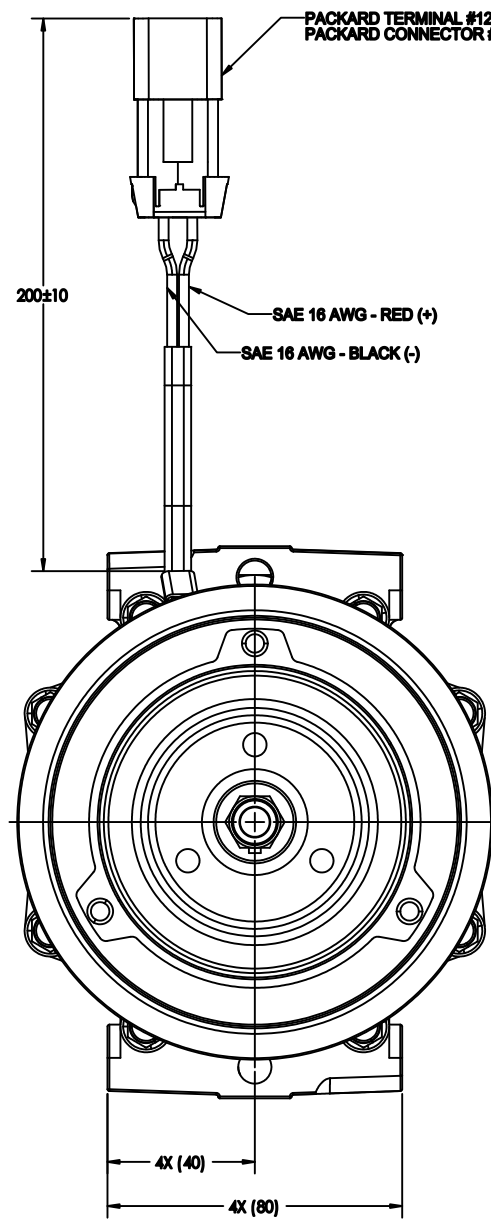
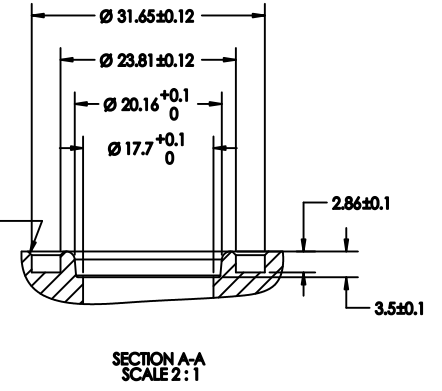
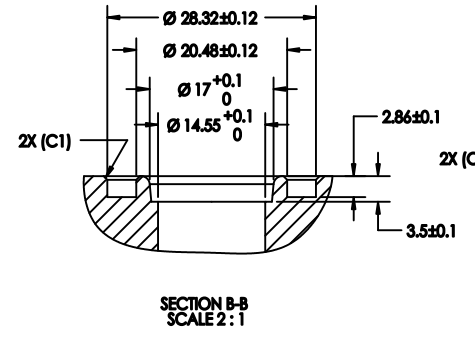
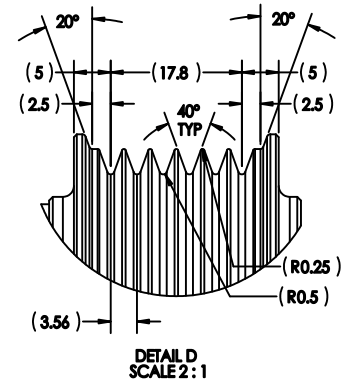
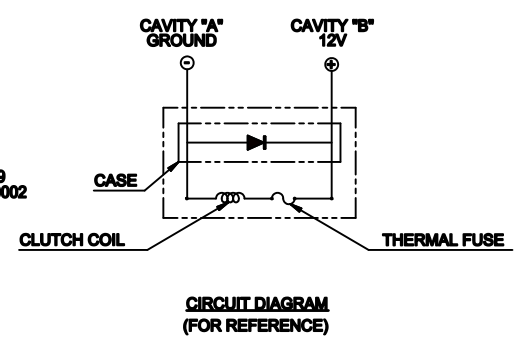
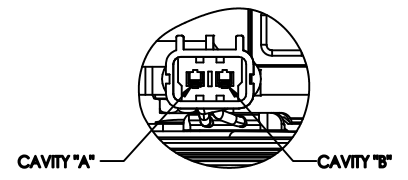


REV	DATE	BY	CHK	APPV	REVISIONS	DWN	DGN	CHK	APPV
1					INITIAL ISSUE REFERENCE 4120-6000 REVISION C.				



COMPRESSOR SPECIFICATIONS (REFERENCE)	
DISPLACEMENT PER REVOLUTION	154.9 cc
MAXIMUM ALLOWABLE RPM	8000 RPM
MAXIMUM ALLOWABLE CONTINUOUS RPM	6000 RPM
REFRIGERANT	R134a
SP-15 OIL QUANTITY	300±10 cc
WEIGHT	7.566 kg (16.68 lb)

CLUTCH SPECIFICATIONS (REFERENCE)	
RATED VOLTAGE	DC 12V
BREAKAWAY TORQUE	34 N·m (3.5 kgf·cm) AT 12V
MINIMUM ENGAGEMENT VOLTAGE	7.5V AT 0.6 mm AIR GAP
MAXIMUM POWER CONSUMPTION	49 W
BELT TYPE	PV6
MAXIMUM ALLOWABLE BELT TENSION	1176 N (120 kgf)
PULLEY DIAMETER	Ø 125 mm
CLUTCH TYPE	SUPER HEAVY DUTY

REV	RELEASED FOR PRODUCTION	<p>THE INFORMATION CONTAINED IN THIS DRAWING IS THE SOLE PROPERTY OF SANDEN INTERNATIONAL. ANY REPRODUCTION IN PART OR AS A WHOLE WITHOUT THE WRITTEN PERMISSION OF SANDEN INTERNATIONAL INC IS PROHIBITED.</p>
DGN	T. Stone	
CHK	J. Stone	
APPV	A. Whaley	
DATE	4/23/12	<p>INTERPRETATION OF THIS DRAWING PER ASME Y14.5M-1994</p> <p>WIND ANGLE PROJECTION</p>
REV	RELEASED FOR DESIGN VALIDATION	<p>MATERIAL</p>
DGN	T. Stone	
APPV	A. Whaley	<p>NAME</p> <p><b>COMPRESSOR</b></p>
DATE	4/23/12	
REV	RELEASED FOR PRODUCTION	<p>DWG. NO.</p> <p><b>4120-6000</b></p>
DGN	T. Stone	
APPV	A. Whaley	REV
DATE	4/23/12	