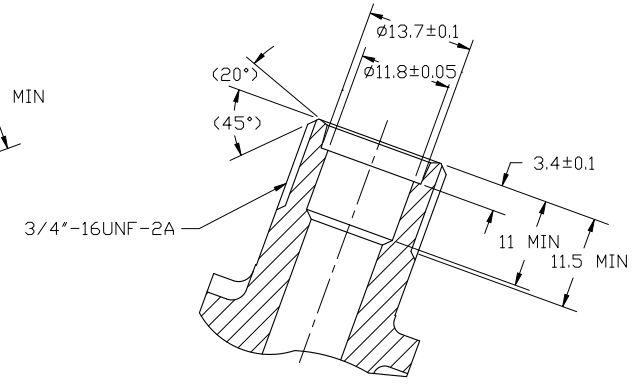
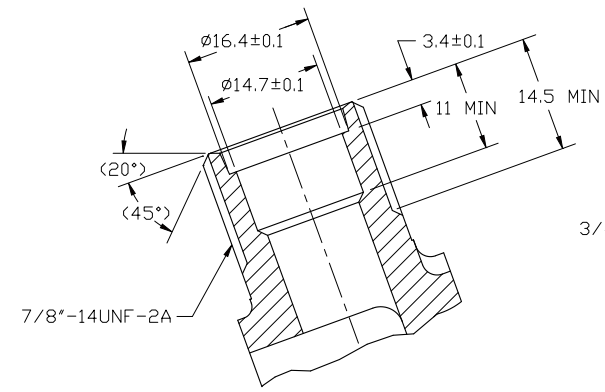
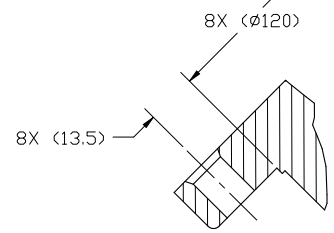
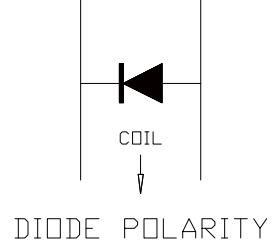


SAE GXL 16 AWG (GREEN) (+) SAE GXL 16 AWG (BLACK) (-)



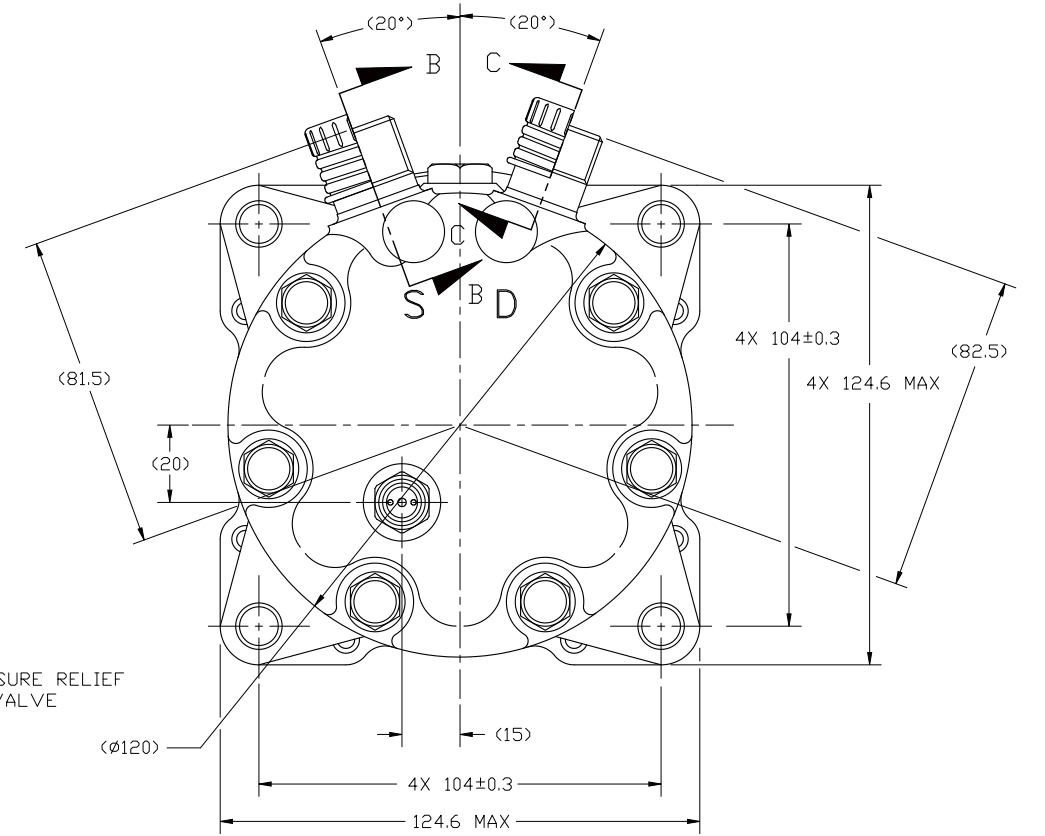
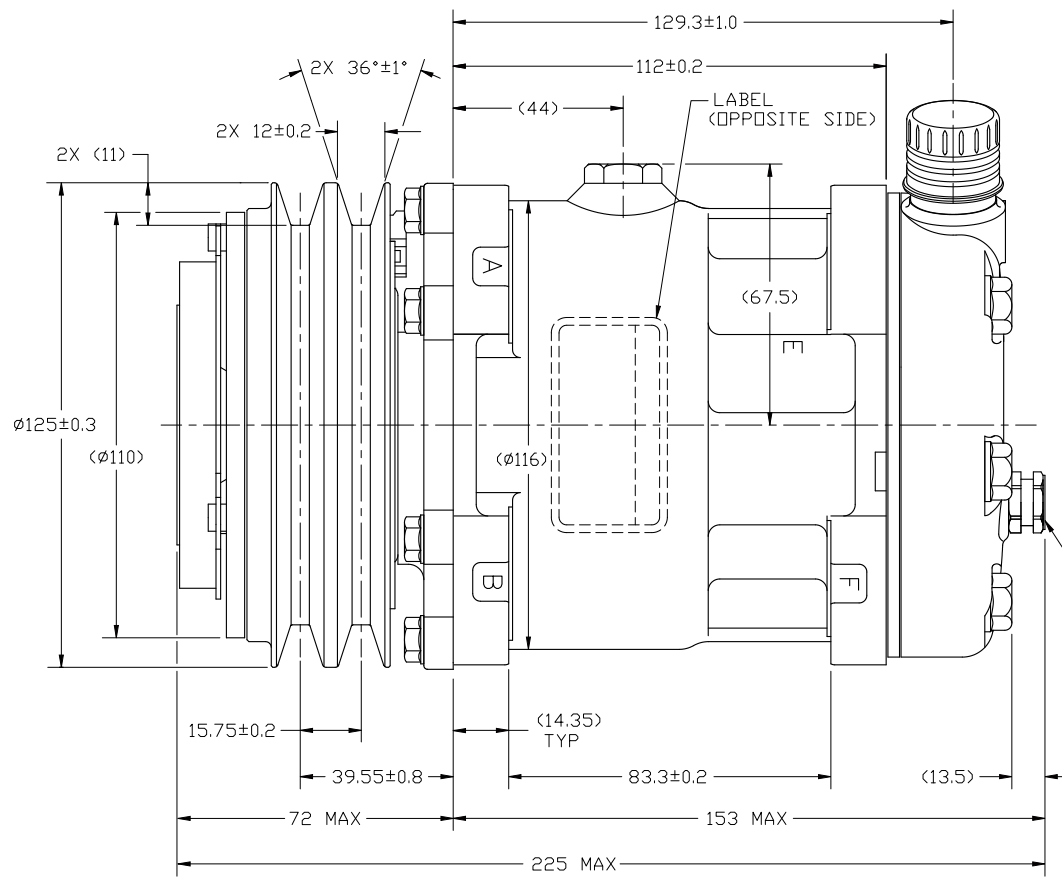
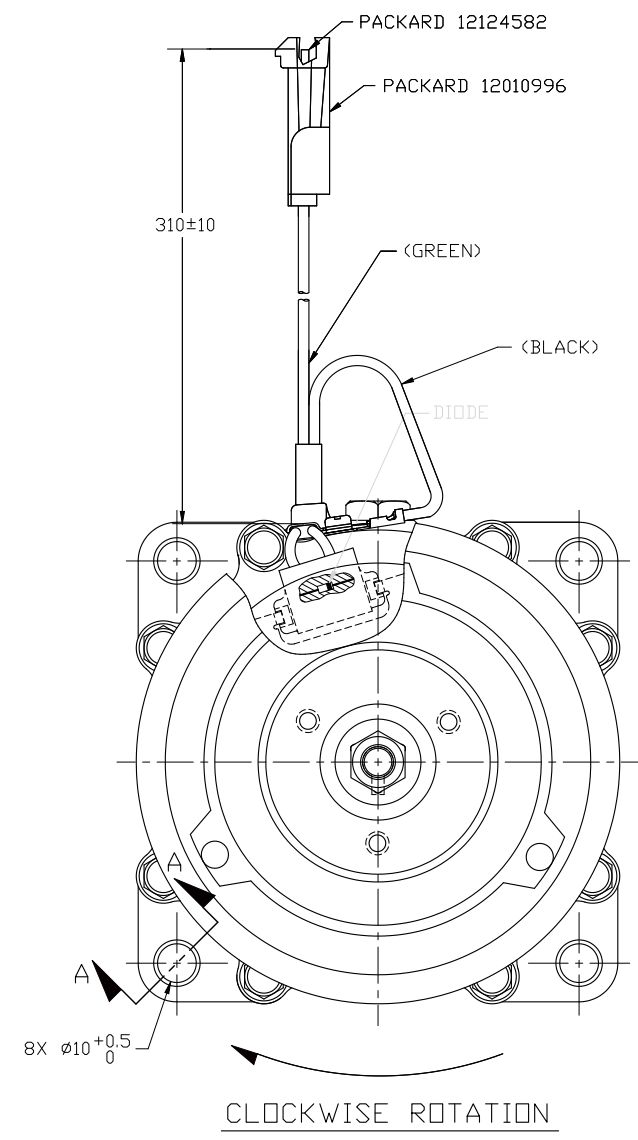
SECTION A-A

SECTION B-B

SCALE: 2:1
(SECTION SHOWN WITH SEAL CAP REMOVED)

SECTION C-C

SCALE: 2:1
(SECTION SHOWN WITH SEAL CAP REMOVED)



PRESSURE RELIEF VALVE

COMPRESSOR SPECIFICATIONS REF.

DISPLACEMENT PER REVOLUTION	154.9 cc / rev. (9.5 in. ³ / rev.)
MAXIMUM ALLOWABLE R.P.M.	8000 R.P.M.
MAXIMUM ALLOWABLE CONTINUOUS R.P.M.	6000 R.P.M.
REFRIGERANT	R134a
OIL (SP-15)	240 cc (8.12 fl. oz.)
CUSTOMER PART NUMBER	

CLUTCH SPECIFICATIONS REF.

RATED VOLTAGE	DC 12V
BREAKAWAY TORQUE	3.5 kgf-m MIN. @ 12V
MINIMUM ENGAGEMENT VOLTAGE	7.5V @ AIR GAP 0.6mm
POWER CONSUMPTION	49 WATTS MAX.
BELT TYPE	A TYPE
MAXIMUM ALLOWABLE BELT TENSION	60 kgf PER BELT
PULLEY DIAMETER	φ125mm (4.9 in.)
CLUTCH TYPE	HEAVY DUTY

NOTE:

- DIMENSIONS ARE TO VIRTUAL SHARP CORNERS UNLESS OTHERWISE SPECIFIED.
- COMPRESSOR TO BE CHARGED WITH NITROGEN PRIOR TO SHIPPING WITHIN 0.2 TO 1.6 kg/cm².

DO NOT SCALE

REV. LEVEL	RELEASED FOR ENGG DEVELOPMENT	<p>SANDEN INTERNATIONAL (U.S.A.), INC.</p> <p>DRAWN SCALE REF 1:1 PLOTTED SCALE REF NONE METRIC</p> <p>This drawing and the information contained hereon are CONFIDENTIAL and PROPRIETARY to Sanden International (U.S.A.), Inc., are received in CONFIDENCE and shall not be used, copied, or disclosed to others without the written permission of Sanden International (U.S.A.), Inc.</p>
DSGN	Teresa Gorski	
DWN	Teresa Gorski	
CHK	Alfredo Amadoriz	
APPV	Rene Martinez	
DATE	01/08/09	INTERPRETATION OF THIS DRAWING PER ASME Y14.5M-1994
REV. LEVEL	RELEASED FOR DESIGN VALIDATION	THIRD ANGLE PROJECTION
DSGN	Teresa Gorski	SIZE D
DWN	Teresa Gorski	
CHK	Alfredo Amadoriz	
APPV	Rene Martinez	
DATE	01/08/09	
REV. LEVEL	RELEASED FOR PRODUCTION VAL'D.	MATERIAL:
DSGN	Teresa Gorski	
DWN	Teresa Gorski	
CHK	Alfredo Amadoriz	
APPV	Rene Martinez	
DATE	01/08/09	
REV. LEVEL	RELEASED FOR PRODUCTION	NAME
DSGN	J Sokolowski	COMPRESSOR
DWN	J Sokolowski	
CHK	H Farah	
APPV	H Farah	
DATE	8/27/10	DWG. NO. 4260-6000
		REV. A