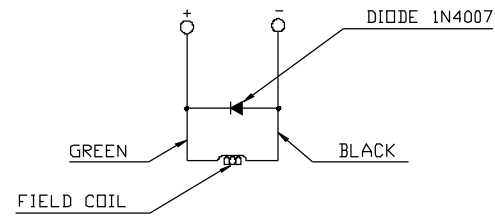
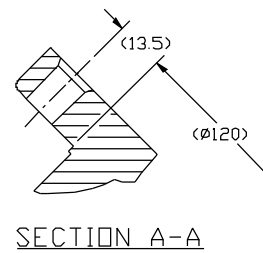


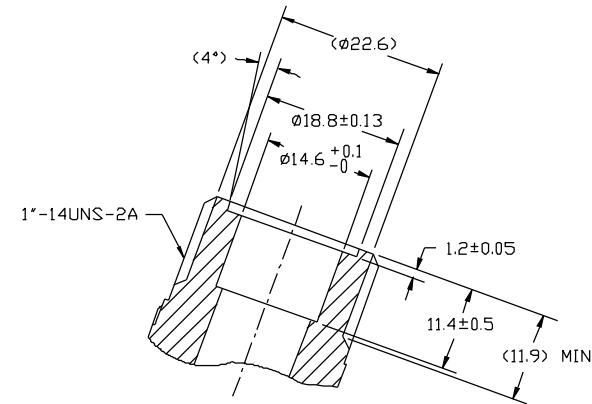
PDCN	REV	APPV DATE	REVISIONS	DWN	DSGN	CHK	APPV
			INITIAL ISSUE				
10189	A	02/11/13	PLACED INSIDE BAG (4860-0400) WAS LOOSE IN BOX (4860-0400)	JK	JK	DRL	RM



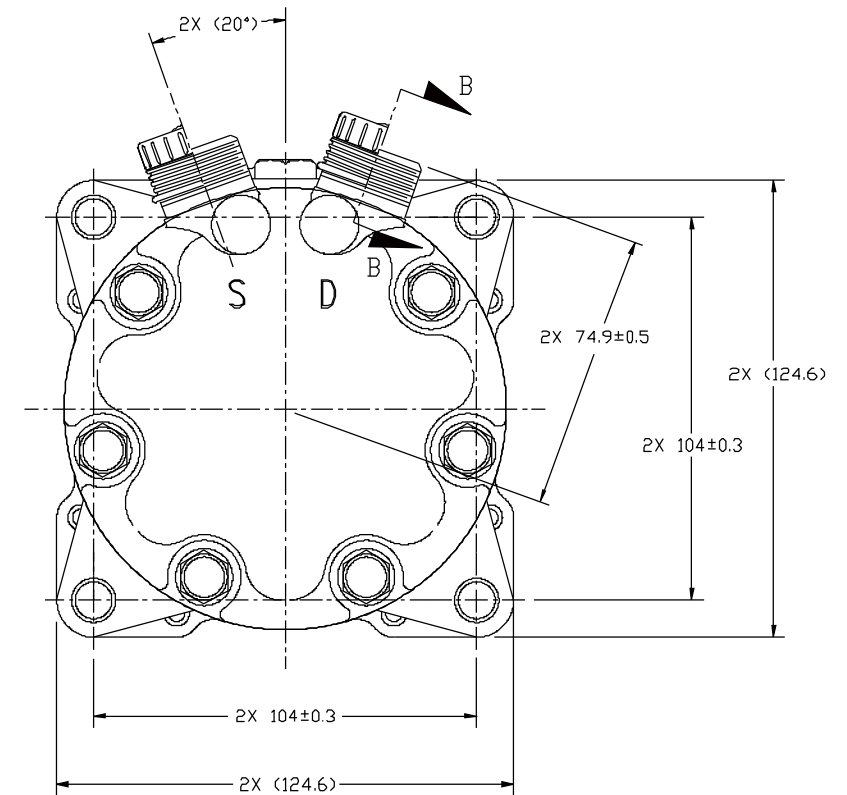
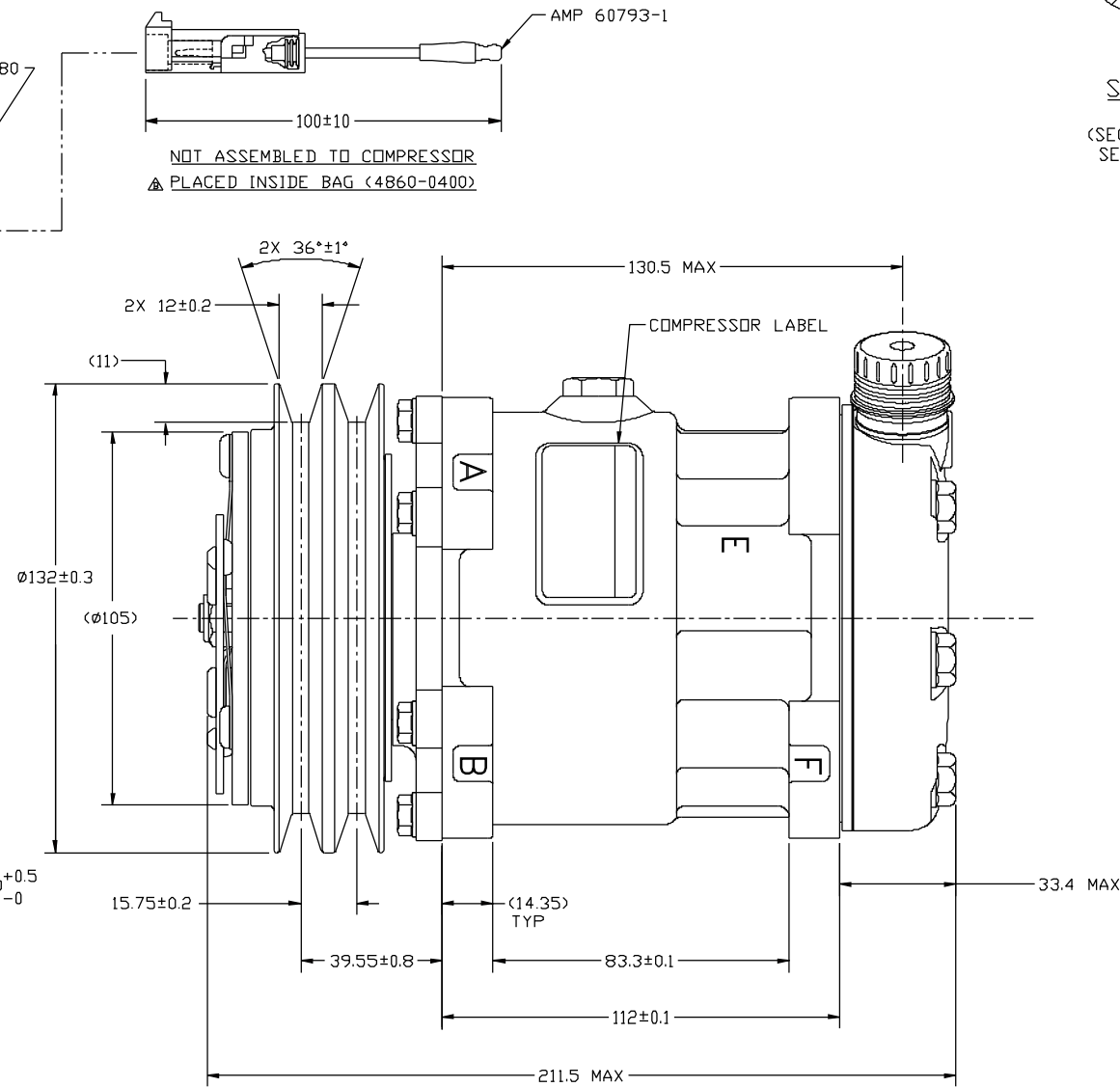
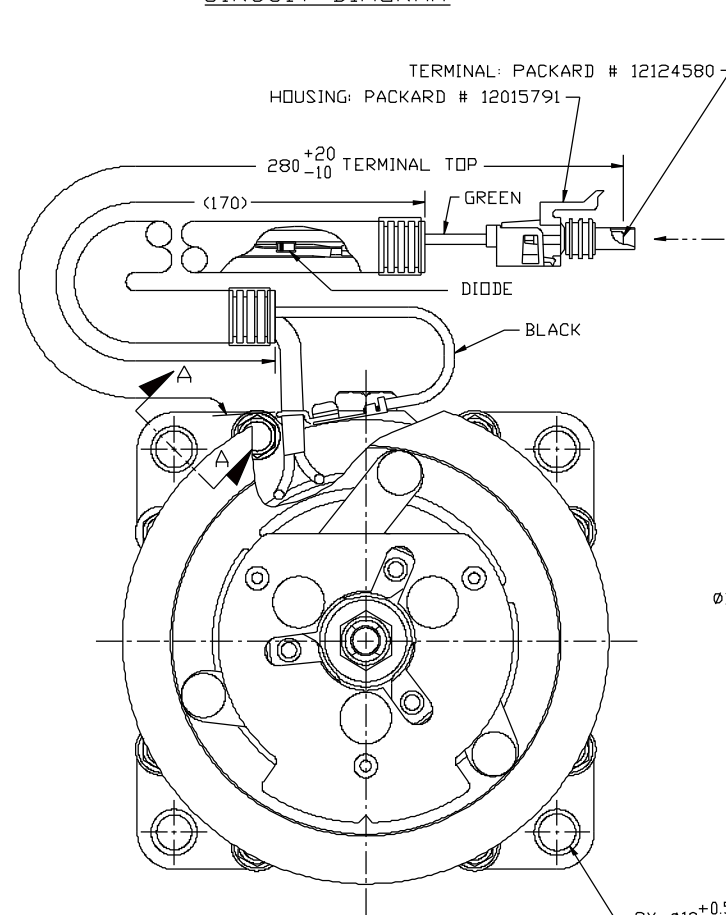
CIRCUIT DIAGRAM



SECTION A-A



SECTION B-B
SCALE 2:1
(SECTION SHOWN WITH
SEAL CAP REMOVED)
2X



COMPRESSOR SPECIFICATIONS (REF)

DISPLACEMENT PER REVOLUTION	154.9 cc
MAXIMUM ALLOWABLE RPM	7000 RPM
MAXIMUM ALLOWABLE CONTINUOUS RPM	6000 RPM
REFRIGERANT	R134a
OIL (SP-15)	200 cc
COMPRESSOR WEIGHT	7.6 kg

CLUTCH SPECIFICATIONS (REF)

RATED VOLTAGE	DC 24V
BREAKAWAY TORQUE	34 N-m MIN @ 24V
MINIMUM ENGAGEMENT VOLTAGE	16V @ 0.6 mm AIR GAP
POWER CONSUMPTION	34 W MAX
BELT TYPE	A2
MAXIMUM ALLOWABLE BELT TENSION	60 kgf/BELT
PULLEY DIAMETER	132 mm
CLUTCH TYPE	HEAVY DUTY

DO NOT SCALE

REV. LEVEL	RELEASED FOR:	DATE	SCALE REF	PLOTTED SCALE REF	SIZE
A	DESIGN DEVELOPMENT DSGN: A. ARMENDARIZ DWN: A. ARMENDARIZ CHK: S. NAGARAJ APPV: R. MARTINEZ DATE: 06/04/09	06/04/09	1:1	1:1	METRIC
A	DESIGN VALIDATION DSGN: A. ARMENDARIZ APPV: R. MARTINEZ DATE: 06/04/09	06/04/09			
A	PRODUCTION VAL'D. DSGN: A. ARMENDARIZ APPV: R. MARTINEZ DATE: 06/04/09	06/04/09			
A	PRODUCTION DSGN: A. ARMENDARIZ APPV: R. MARTINEZ DATE: 06/04/09	06/04/09			

SANDEN INTERNATIONAL (U.S.A.), INC.
 SANDEN INTERNATIONAL (U.S.A.), INC.
 This drawing and the information contained herein are CONFIDENTIAL and PROPRIETARY to Sanden International (U.S.A.), Inc. and shall not be used, copied, or disclosed to others without the written permission of Sanden International (U.S.A.), Inc.

INTERPRETATION OF THIS DRAWING PER ASME Y14.5M-1994
 THIRD ANGLE PROJECTION
 NAME: COMPRESSOR
 DWG NO: 4292-6000
 REV: B