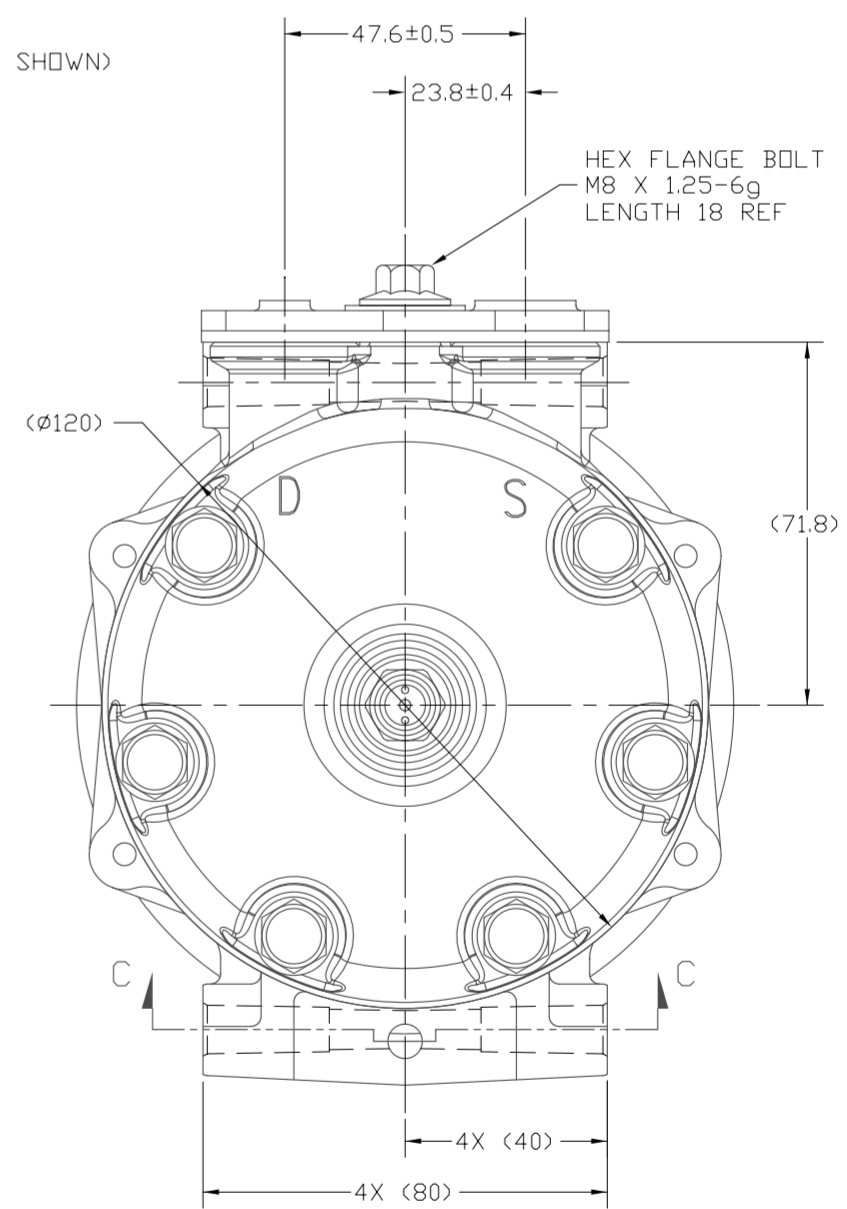
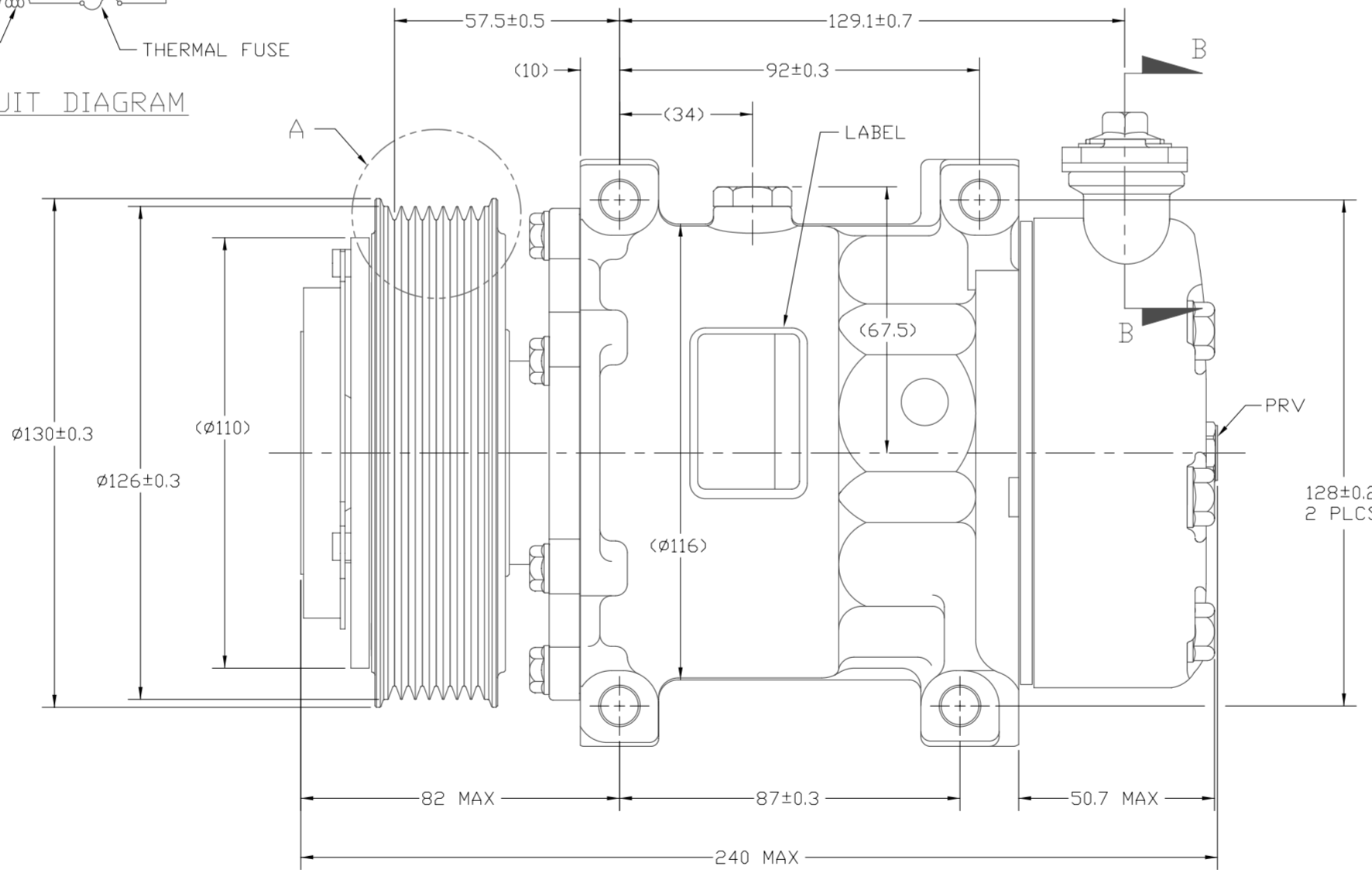
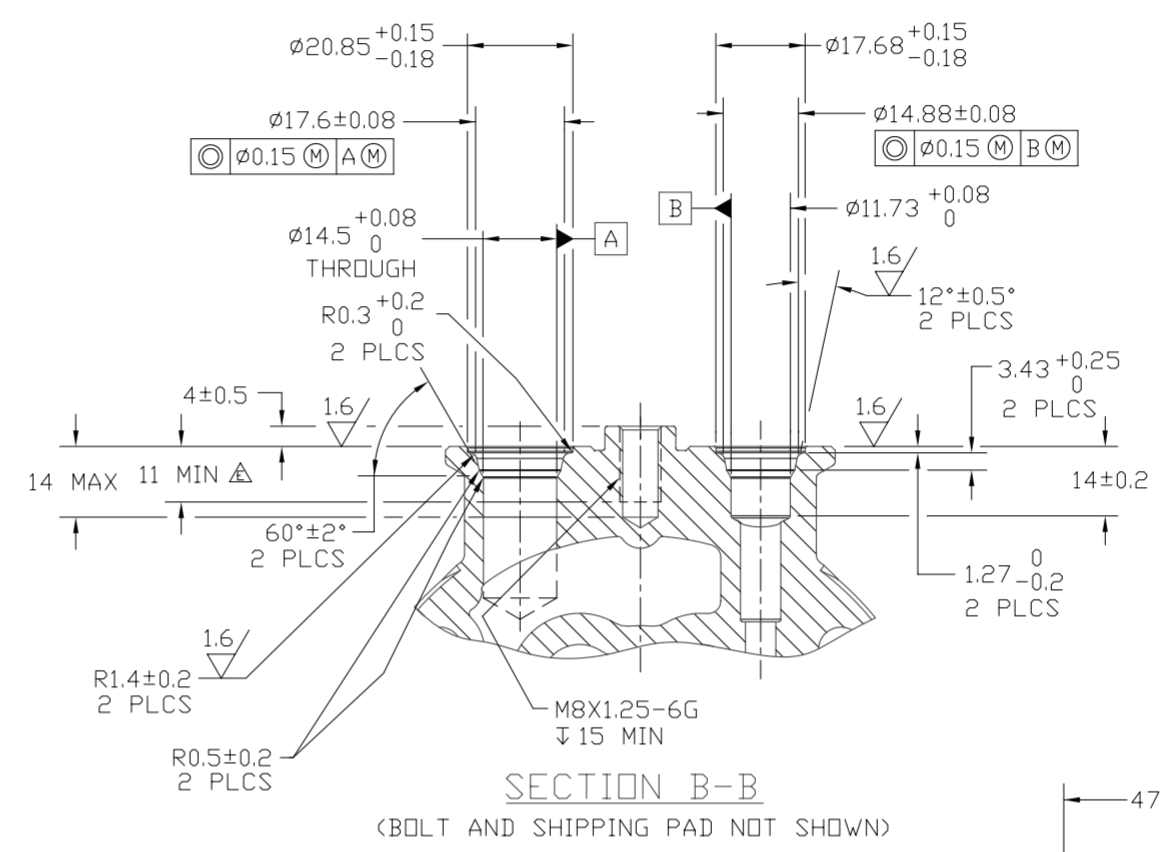
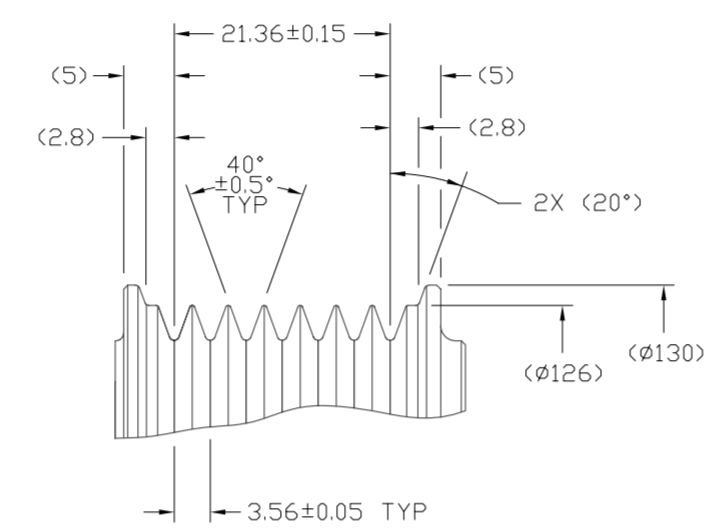
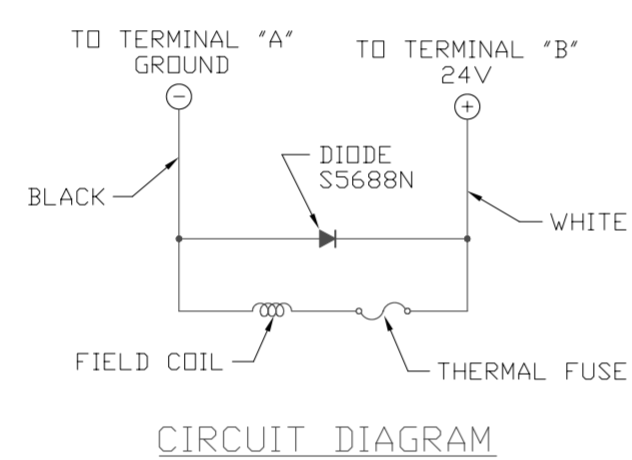
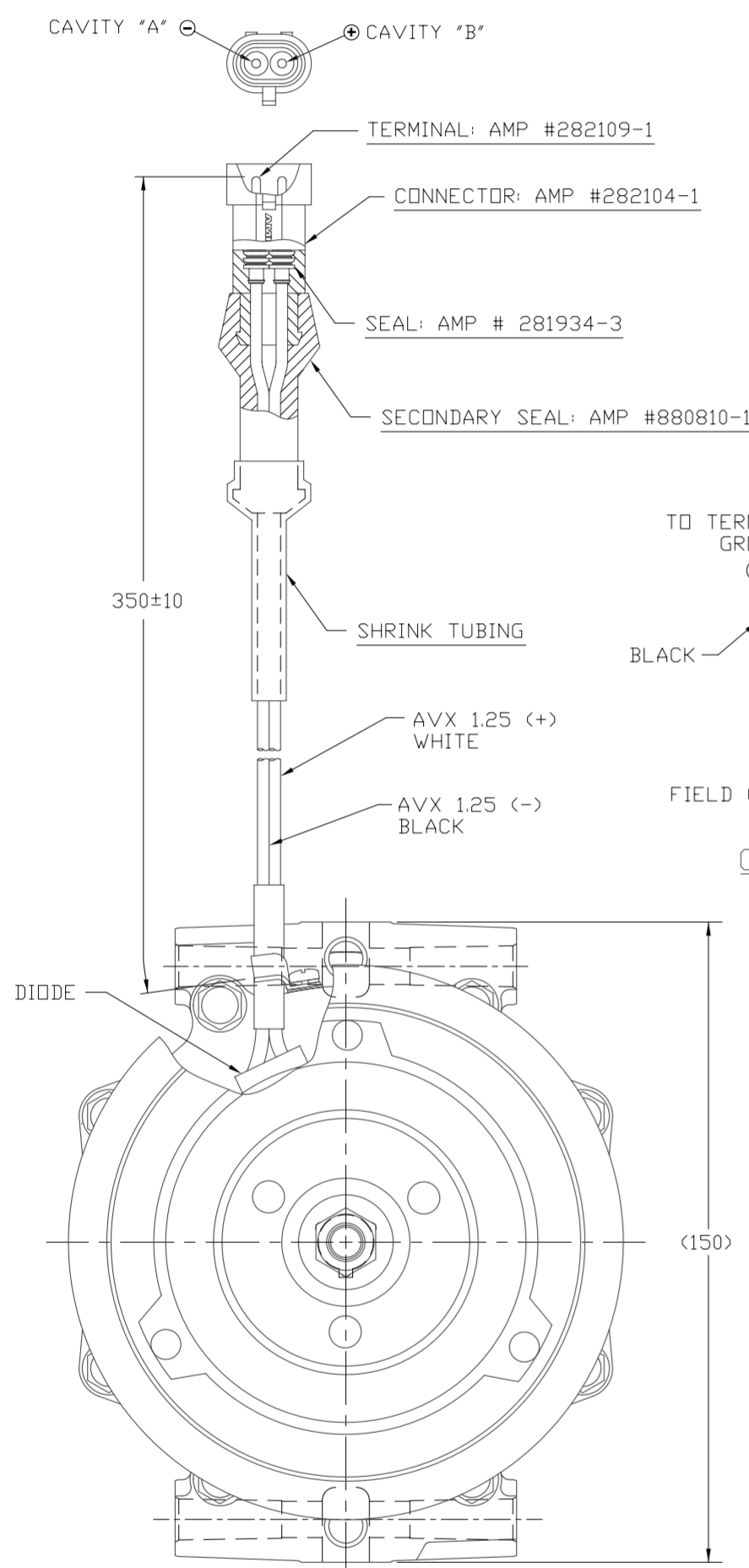


REV. LEVEL	REV.	APPV. DATE	REVISIONS	DWN	DSGN	CHK	APPV.
	1		INITIAL ISSUE				



CLOCKWISE ROTATION

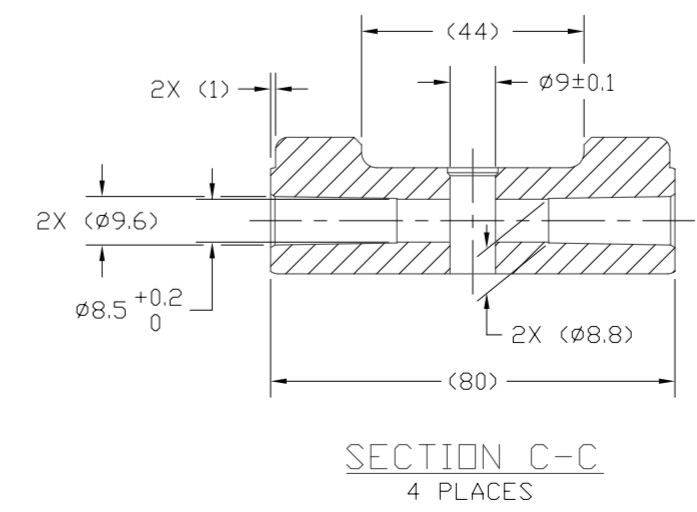
- NOTES:
1. COMPLIES WITH EU ELV DIRECTIVE 2000/53/EC.
 2. CLEANLINESS: TOTAL AMOUNT OF FOREIGN MATERIAL SHALL NOT EXCEED 30mg. MAXIMUM EACH SIZE 0.5x0.5x1.0mm
 3. ENGINEERING STANDARD SES-CC-218 (DRAFT)

COMPRESSOR SPECIFICATIONS (REF)

DISPLACEMENT PER REVOLUTION	154.9 cc/rev. (9.5 cuin./rev.)
MAXIMUM ALLOWABLE R.P.M.	6000 R.P.M.
MAXIMUM ALLOWABLE CONTINUOUS R.P.M.	7000 R.P.M.
REFRIGERANT	R134a
OIL (SP-15)	300 cc (10.1 fl.oz.)

CLUTCH SPECIFICATIONS (REF)

RATED VOLTAGE	DC 24V
BREAKAWAY TORQUE	3.5 kgf-m min. @ 24V
MINIMUM ENGAGEMENT VOLTAGE	7.5V @ AIR GAP 0.6mm REF
POWER CONSUMPTION	42 Watts MAX.
BELT TYPE	PV7 TYPE
MAXIMUM ALLOWABLE BELT TENSION	120 kgf
PULLEY DIAMETER	Ø126 mm (4.96 in.)
CLUTCH TYPE	HEAVY DUTY



DO NOT SCALE

REV. LEVEL	RELEASED FOR: ENGG DEVELOPMENT	DATE	9/23/05	<p>SANDEN INTERNATIONAL (U.S.A.), INC.</p>
DWN	R. Rodriguez	DATE	9/23/05	
APPV.	M. Burns	DATE	10-11-05	<p>This drawing and the information contained hereon are CONFIDENTIAL and PROPRIETARY to Sanden International (U.S.A.), Inc., are received in CONFIDENCE and shall not be used, copied, or disclosed to others without the written permission of Sanden International (U.S.A.), Inc.</p>
REV. LEVEL	RELEASED FOR: DESIGN VALIDATION	DATE		
APPV.		DATE		INTERPRETATION OF THIS DRAWING PER ASME Y14.5M-1994
REV. LEVEL	RELEASED FOR: PRODUCTION VALID.	DATE		MATERIAL:
APPV.		DATE		THIRD ANGLE PROJECTION
APPV.		DATE		SIZE
APPV.		DATE		NAME
APPV.		DATE		COMPRESSOR
APPV.		DATE		DWG. NO.
APPV.		DATE		4389-6000
APPV.		DATE		REV
APPV.		DATE		A

DAF P/N: TBD