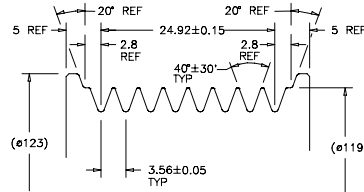
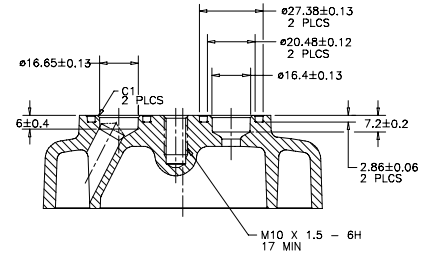


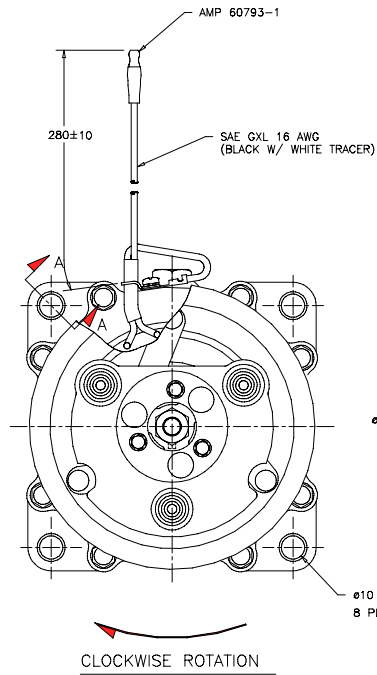
SECTION A-A



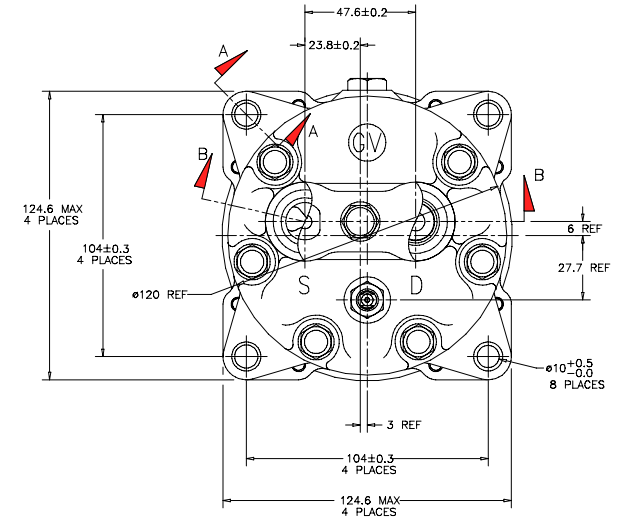
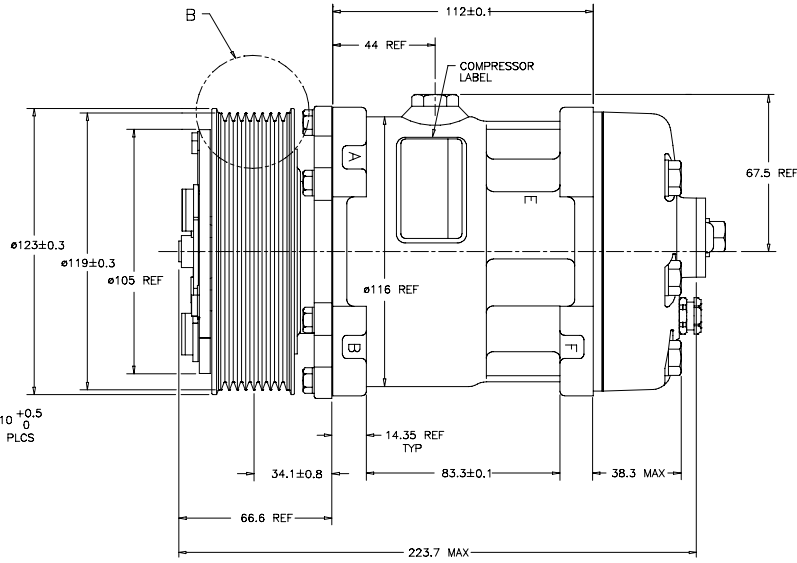
DETAIL B
SCALE: 3:1



SECTION B-B
(SECTION WITH O-RINGS, SHIPPING)



CLOCKWISE ROTATION



COMPRESSOR SPECIFICATIONS

DISPLACEMENT PER REVOLUTION	154.9 cc / rev. (9.5cu.in. / rev.)
MAXIMUM ALLOWABLE SPEED	7000 R.P.M.
MAXIMUM ALLOWABLE CONTINUOUS SPEED	6000 R.P.M.
REFRIGERANT	R134g
OIL (SP-15)	200 cc (6.76 fl.oz.)
WEIGHT	7.6 kg (16.8 lb.)

CLUTCH SPECIFICATIONS

RATED VOLTAGE	DC 12V
BREAKAWAY TORQUE	3.5 kgf-m min. @ 12V
MINIMUM ENGAGEMENT VOLTAGE	7.5V @ AIR GAP 0.6mm REF
POWER CONSUMPTION	49 watts max.
BELT TYPE	PV8 TYPE
MAXIMUM ALLOWABLE BELT TENSION	120 kgf
PULLEY DIAMETER	ø119 mm (4.69 in.)
CLUTCH TYPE	STANDARD

NOTE:
1. N₂ HOLDING CHARGE DELETED.

SANDEN INTERNATIONAL (U.S.A.) INC. 111 METRIC	
DESIGN FOR: DRGN P, Nuculich	DRAWN BY: R. Rodriguez
APPR: HF/HB DATE: 8/7/98 RELEASED FOR: DESIGN VALIDATION	SCALE: 1:1 1:1
DESIGN FOR: DRGN P, Nuculich	INTERPRETATION OF THIS DRAWING PER ASME Y14.5M-1994
APPR: Note Burns DATE: 8/7/98	THIRD ANGLE PROJECTION SIZE D
RELEASED FOR: PRODUCTION DRGN P, Nuculich	MATERIAL:
APPR: Note Burns DATE: 8/7/98	NAME:
RELEASED FOR: PRODUCTION DRGN P, Nuculich/H	COMPRESSOR
APPR: Note Burns DATE: 8/7/98	DWG. NO. 4451-6000 REV A

DO NOT SCALE