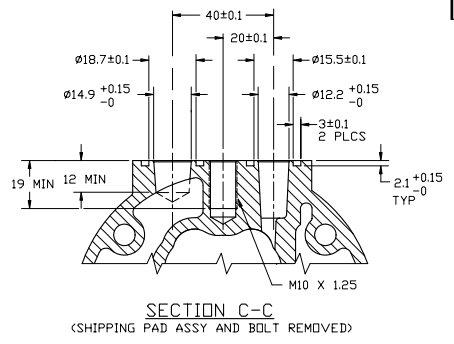
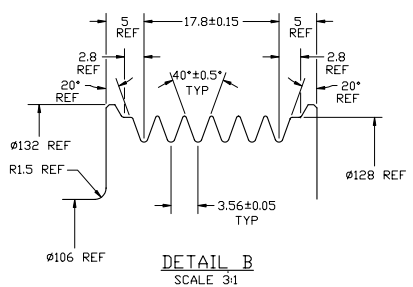
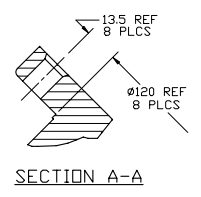
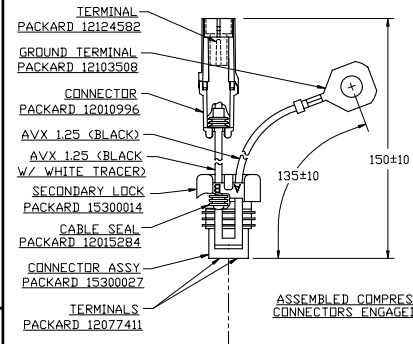
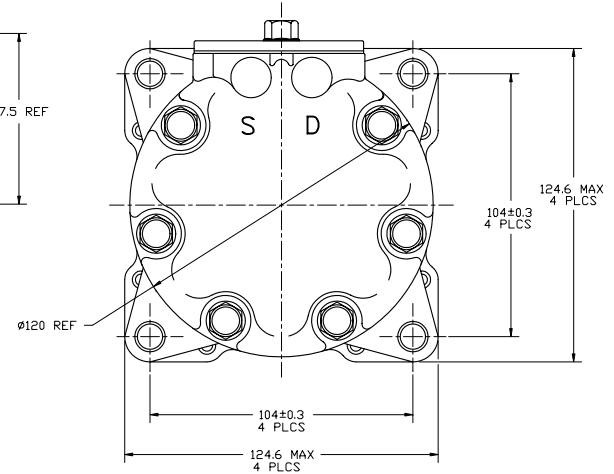
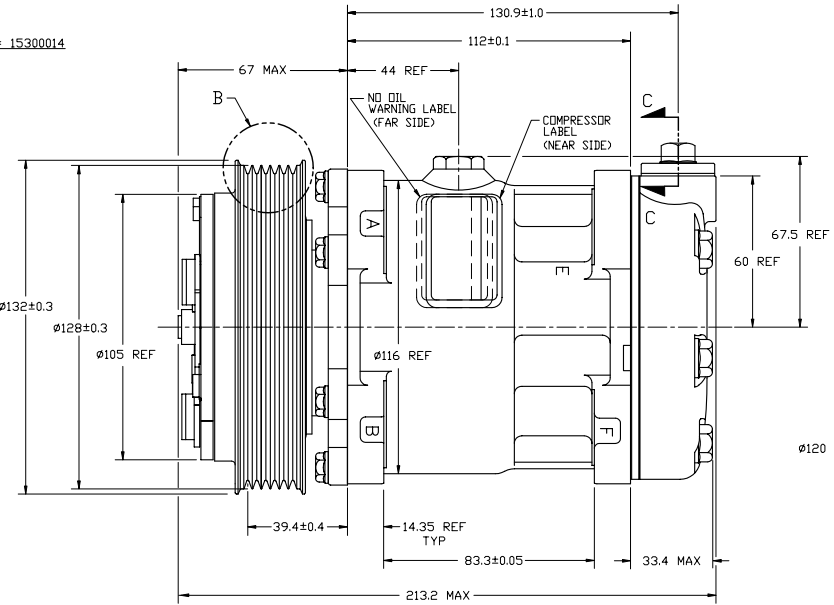
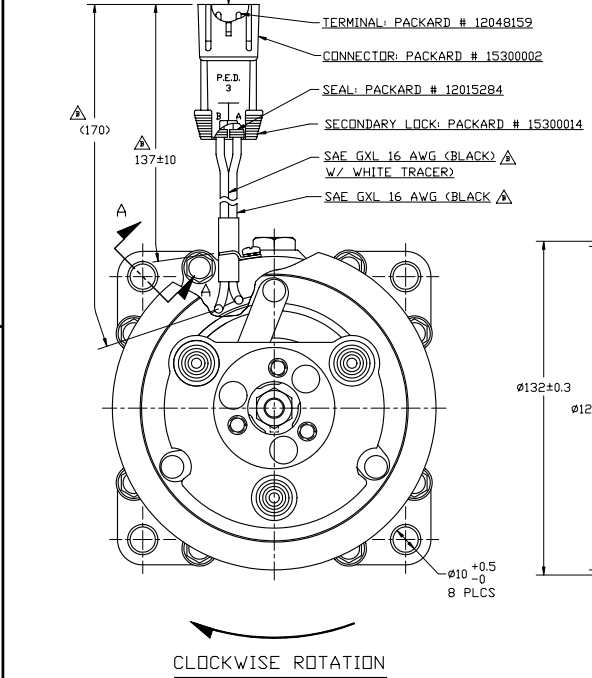


REV.	DATE	REVISIONS	BY	CHK	APPV
1		INITIAL ISSUE			
204496		SDM 13710 WAS 137 REF SDM 1378 WAS 137A REF			
204495	8/2/04	CHANGED BLACK AND WHITE TRACER WIRE TO CAVITY 'B' WAS CAVITY 'A', CHANGED BLACK WIRE TO CAVITY 'A' WAS CAVITY 'B'.	DRL	DFW	963 7/02
					502 023



ASSEMBLED COMPRESSORS TO HAVE CONNECTORS ENGAGED (4467-0400)



**COMPRESSOR SPECIFICATIONS**

DISPLACEMENT PER REVOLUTION	154.9 cc / rev. ( 9.5cuin. / rev. )
MAXIMUM ALLOWABLE R.P.M.	8000 R.P.M.
MAXIMUM ALLOWABLE CONTINUOUS R.P.M.	6000 R.P.M.
REFRIGERANT	R134a
OIL	RESIDUAL OIL ONLY
WEIGHT	7.4 kg ( 16.3 lb. )

**CLUTCH SPECIFICATIONS**

RATED VOLTAGE	DC 12V
BREAKAWAY TORQUE	3.5 kgf-m min. @ 12V
MINIMUM ENGAGEMENT VOLTAGE @ 20°C	7.5V max @ AIR GAP 0.6mm REF
POWER CONSUMPTION	49 watts max.
BELT TYPE	PV6 TYPE
MAXIMUM ALLOWABLE BELT TENSION	120 kgf
PULLEY DIAMETER	Ø128 mm ( 5.04 in. )
CLUTCH TYPE	STANDARD

REV. LEVEL	RELEASED FOR DESIGN DEVELOPMENT		<b>METRIC</b> <small>THIRD ANGLE PROJECTION</small>
CHK	J. Sanozaki		
OWN	Paul Pasco	This drawing and the information contained herein are CONFIDENTIAL and PROPRIETARY to Sanden International (U.S.A.), Inc. and are loaned in CONFIDENCE and shall not be used, copied, or disclosed to others without the written permission of Sanden International (U.S.A.), Inc.	INTERPRETATION OF THIS DRAWING PER ASME Y14.5M-1994
APPV.	NO		
DATE	4/2/04	RELEASED FOR DESIGN VALIDATION P/N: <i>David Pasco</i> RE: <i>Max M/Red Item</i> DATE: <i>10/18/04</i>	MATERIAL:
REV. LEVEL	RELEASED FOR PRODUCTION VAL'S		
APPV.	NO	RELEASED FOR PRODUCTION VAL'S P/N: <i>David Pasco</i> RE: <i>Max M/Red Item</i> DATE: <i>10/18/04</i>	NAME:
REV. LEVEL	RELEASED FOR DESIGN		
APPV.	NO	NAME:	COMPRESSOR
DATE			
APPV.	NO	DWG. NO.: 4467-6000	REV. B
DATE			

DO NOT SCALE