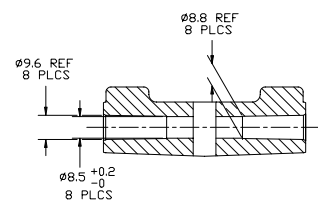
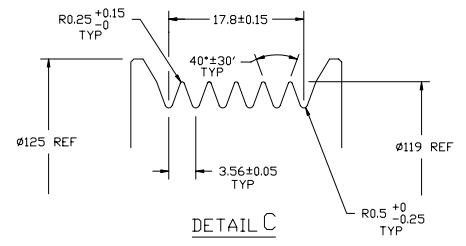


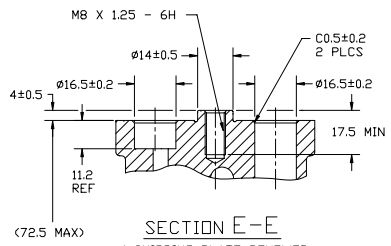
PKCN	REV.	APPLY DATE	REVISIONS	DWN	ESGN	CHK	APPV
			INITIAL ISSUE				



SECTION A-A



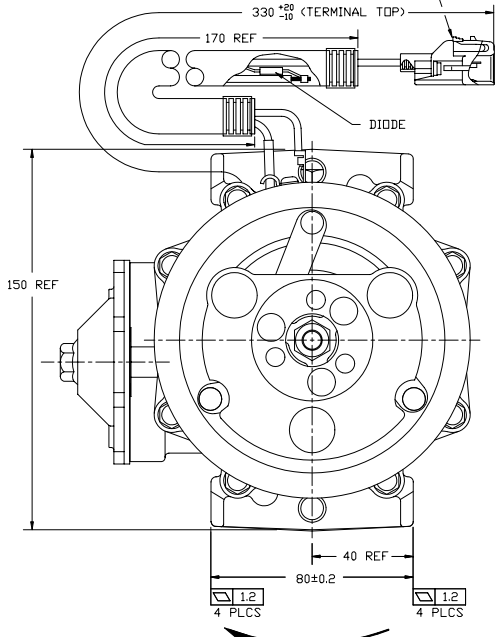
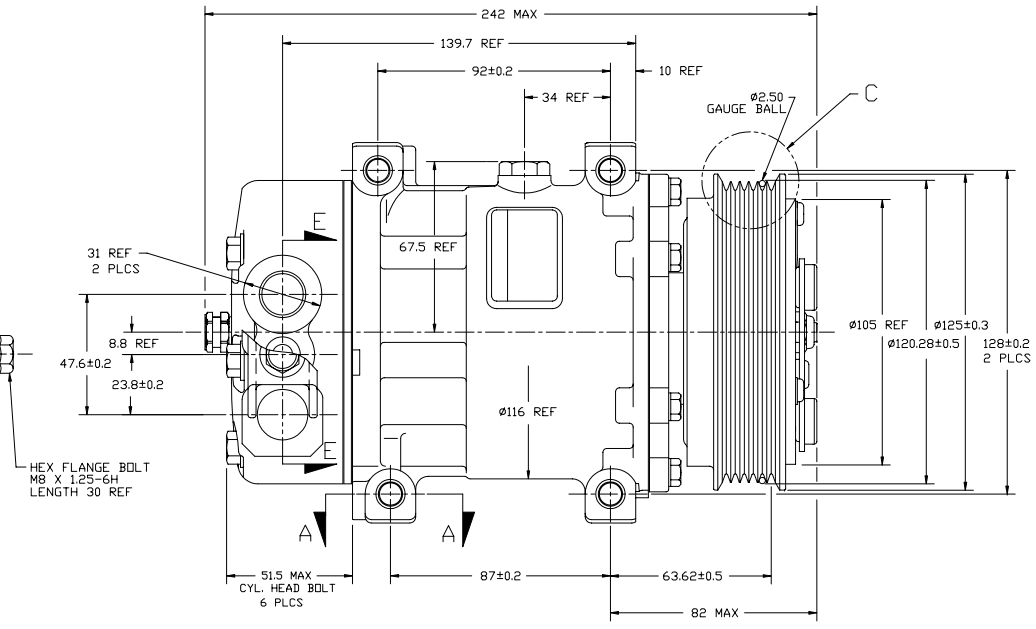
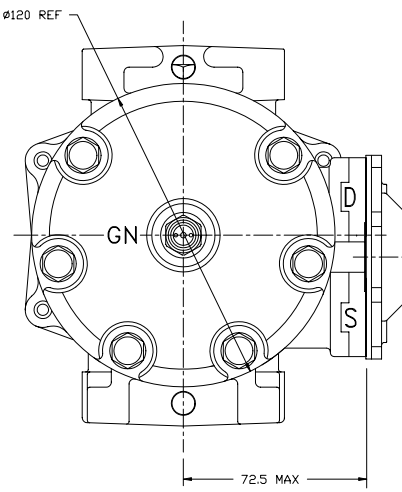
DETAIL C
SCALE: 3:1



SECTION E-E
(SHIPPING PLATE REMOVED, SECTION ROTATED 90°)

NOTE:
1. COMPRESSOR/CLUTCH MUST CONFORM TO THE REQUIREMENTS OF SANDEN STANDARDS SES-214 REV. B AND SIA-ES-2002 REV. B.
2. N₂ HOLDING CHARGE DELETED.

YAZAKI HOUSING 7282-7010-40
YAZAKI TERMINAL 7114-4026



CLOCKWISE ROTATION

COMPRESSOR SPECIFICATIONS

DISPLACEMENT PER REVOLUTION	154.9 cc / rev. (9.5cuin. / rev.)
MAXIMUM ALLOWABLE R.P.M.	8000 R.P.M.
MAXIMUM ALLOWABLE CONTINUOUS R.P.M.	6000 R.P.M.
REFRIGERANT	R134a
OIL (SP-20)	240 cc (8.1 floz.)
WEIGHT	7.2 kg (16 lb.)

CLUTCH SPECIFICATIONS

RATED VOLTAGE	DC 12V
BREAKAWAY TORQUE	3.5 kgf-m min. @ 12V
MINIMUM ENGAGEMENT VOLTAGE	7.5V @ AIR GAP 0.6mm REF
POWER CONSUMPTION	49 watts max.
BELT TYPE	PV6
MAXIMUM ALLOWABLE BELT TENSION	90 kgf
PULLEY DIAMETER	119mm (4.68 in.)
CLUTCH TYPE	STANDARD

REV. LEVEL	RELEASED FOR ENG. DEVELOPMENT	<p>SANDEN INTERNATIONAL (U.S.A.), INC.</p>	<p>This drawing and the information contained herein are CONFIDENTIAL and PROPRIETARY to Sanden International (U.S.A.), Inc. and are released in CONFIDENCE and shall not be used, copied or disclosed to others without the written permission of Sanden International (U.S.A.), Inc.</p>
A	APPLY DATE 10/10/97		
REV. LEVEL	RELEASED FOR DESIGN VALIDATION	<p>INTERPRETATION OF THIS DRAWING PER ASME Y14.5M-1994</p>	<p>THIRD ANGLE PROJECTION</p>
REV. LEVEL	RELEASED FOR PRODUCTION VAL'S	MATERIAL	SIZE D
REV. LEVEL	RELEASED FOR PRODUCTION	NAME	COMPRESSOR
REV. LEVEL	RELEASED FOR PRODUCTION	DWG. NO.	4691-AFT-6000
REV. LEVEL	DATE 10/10/97	REV	A

DO NOT SCALE