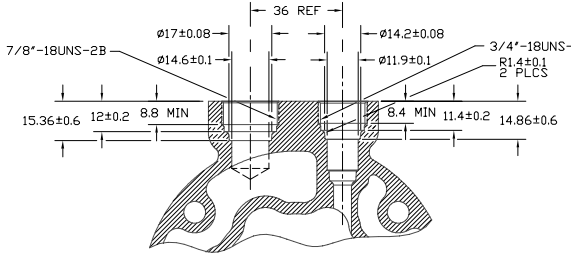
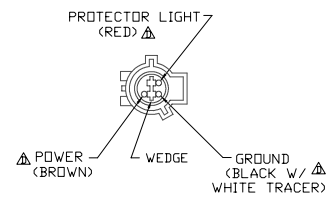


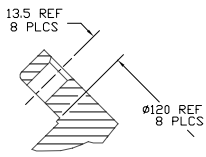
DETAIL B  
SCALE 3:1



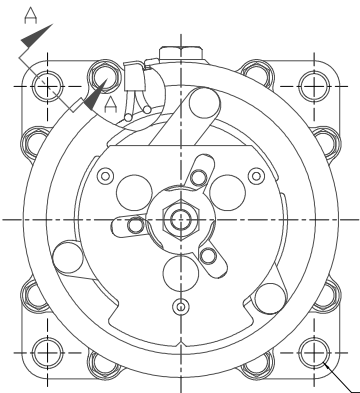
SECTION C-C  
(THRU SUCTION AND DISCHARGE PORT CENTERLINES)  
(SHIPPING CAPS REMOVED)



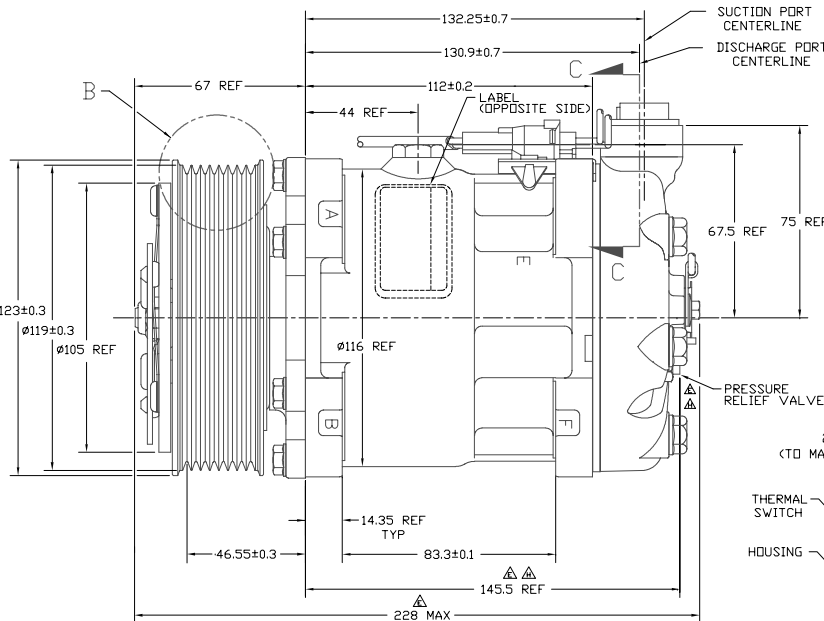
VIEW D-D



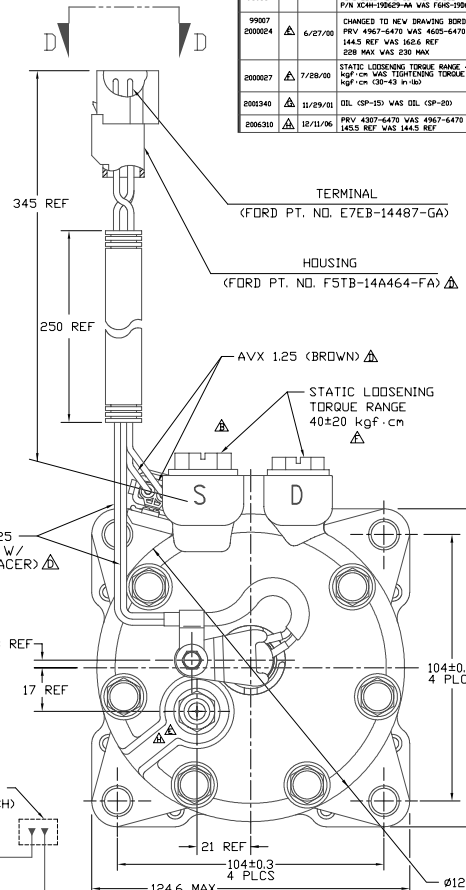
SECTION A-A



CLOCKWISE ROTATION



CLUTCH SPECIFICATIONS (REF)



CIRCUIT DIAGRAM

PCDN	REV.	APPV	DATE	REVISIONS	DWN	SSGN	CHK	APPV
				INITIAL RELEASE				
97183			06/16/97	CHANGED SUCTION PORT SHIPPING CAP TO REF STYLIC	TG	DD	DRL	EMA
97849				CHANGED CUSTOMER P/N AND ADDED TO DWG - WAS F64E-190629-BA DELETED DETAIL B				
97401			09/16/97	F165-190629-BA WAS RECH-190629-BA CHANGED WIRE COLORS IN THE CIRCUIT DIAGRAM BLACK TO BROWN, LIGHT BLUE TO LIGHT RED RED TO BLACK/WHITE TRACER	MM	EMA	DRL	EMA
974746 974748			12/30/98	HOUSING TDRG NO. F5TB-144464-FA WAS E65B-14464-FA FORD LOGO REMOVED FROM LABEL F70N E65B-190629-BA WAS F085-190629-BA	JS	EMA	DRL	EMA
98083								
99007				CHANGED TO NEW DRAWING BORDER	JS	DS	DRL	JB
200024			6/27/00	PRV 4967-6470 WAS 4625-6470 1443 REF WAS 1624 REF 228 MAX WAS 220 MAX	JS	DS	DRL	JB
200027			7/28/00	STATIC LOOSENING TORQUE RANGE 40±20 1443 REF WAS 1624 REF 228 MAX WAS 220 MAX	JS	LM	DRL	DS/MS
200240			11/29/01	OIL (SP-15) WAS OIL (SP-20)	DKC	LK	DRL	MY
200630			12/11/06	PRV 4967-6470 WAS 4967-6470 1453 REF WAS 1443 REF	JS	JW	DRL	TK

COMPRESSOR SPECIFICATIONS (REF)

DISPLACEMENT PER REVOLUTION	154.9 cc / rev. ( 9.5cuin. / rev. )
MAXIMUM ALLOWABLE R.P.M.	6000 R.P.M.
MAXIMUM ALLOWABLE CONTINUOUS R.P.M.	4000 R.P.M.
REFRIGERANT	R134a
OIL (SP-15)	300 cc (10.1 floz.)
CUSTOMER PART NUMBER	XC4H-19D629-AA

RATED VOLTAGE	DC 12V
BREAKAWAY TORQUE	3.5 kgf-m min. @ 12V
MINIMUM ENGAGEMENT VOLTAGE	7.5V @ AIR GAP 0.6mm
POWER CONSUMPTION	49 watts max.
BELT TYPE	PVB TYPE
MAXIMUM ALLOWABLE BELT TENSION	120 kgf
PULLEY DIAMETER	Ø119mm (4.68 in.)

NOTES:  
1. THIS PRODUCT MEETS THE REQUIREMENTS OF SANDEN ENGINEERING SPECIFICATION SES-CC-214.

DO NOT SCALE

**SANDEN**  
SANDEN INTERNATIONAL (U.S.A.), INC.

SCALE REF 1:1 PLATTED SCALE REF 90% METRIC

This drawing and the information contained herein are CONFIDENTIAL and PROPRIETARY to Sanden International (U.S.A.), Inc. and are to be used in CONFIDENCE and shall not be used, copied, or disclosed to others without the written permission of Sanden International (U.S.A.), Inc.

RELEASED FOR PRODUCTION VAL 2  
PCDN: 1/6/97  
APPV: [Signature]  
DATE: 1/6/97

RELEASED FOR PRODUCTION VAL 2  
PCDN: 1/6/97  
APPV: [Signature]  
DATE: 1/6/97

RELEASED FOR PRODUCTION VAL 2  
PCDN: 1/6/97  
APPV: [Signature]  
DATE: 1/6/97

RELEASED FOR PRODUCTION VAL 2  
PCDN: 1/6/97  
APPV: [Signature]  
DATE: 1/6/97

INTERPRETATION OF THIS DRAWING PER ASME Y14.5M-1994

THIRD ANGLE PROJECTION

MATERIAL: [Blank]

NAME: [Blank]

COMPRESSOR

DWG NO. 4718-6000

REV H