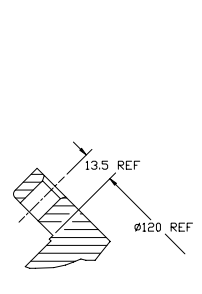
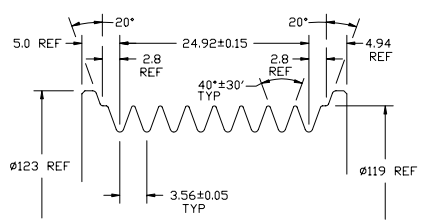


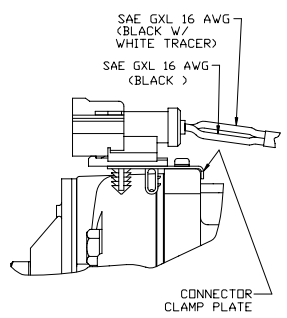
PCDN NO.	REV.	DATE	REVISIONS	DWN	ESGN	CHK	APPV
	1		INITIAL ISSUE				



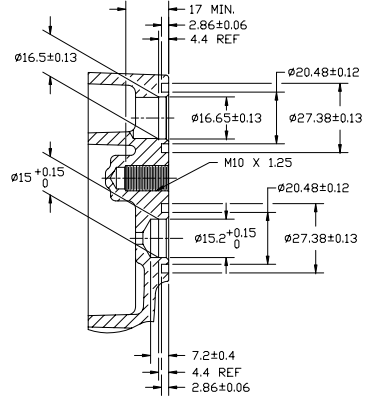
SECTION A-A



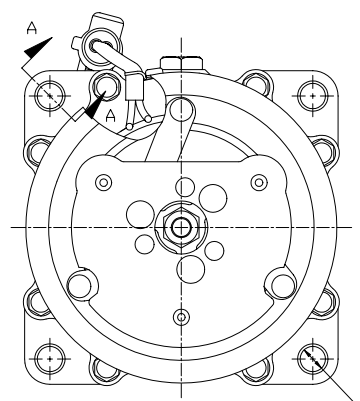
DETAIL B
SCALE 3:1



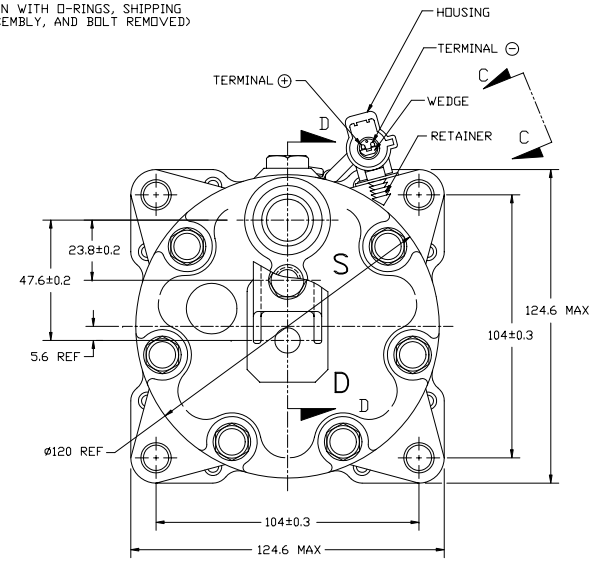
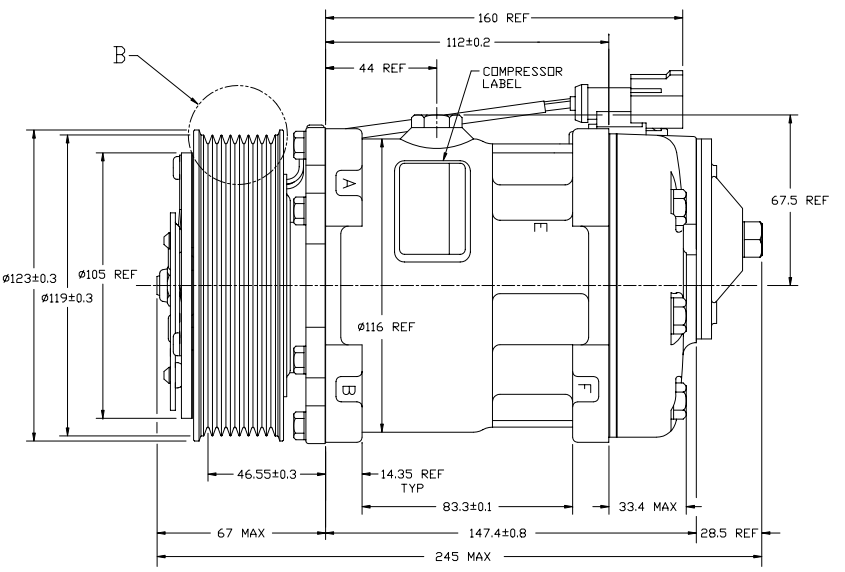
VIEW C-C



SECTION E-E
(SECTION WITH O-RINGS, SHIPPING PAD ASSEMBLY, AND BOLT REMOVED)



CLOCKWISE ROTATION



COMPRESSOR SPECIFICATIONS

DISPLACEMENT PER REVOLUTION	1549 cc / rev. (95cuin. / rev.)
MAXIMUM ALLOWABLE R.P.M.	8000 R.P.M.
MAXIMUM ALLOWABLE CONTINUOUS R.P.M.	6000 R.P.M.
REFRIGERANT	R134a
DIL (SP-1S)	300 cc (10.1 floz.)
WEIGHT	7.6 kg (16.8 lb.)

CLUTCH SPECIFICATIONS

RATED VOLTAGE	DC 12V
BREAKAWAY TORQUE	3.5 kgf-m MIN. @ 12V
MINIMUM ENGAGEMENT VOLTAGE	7.5V MAX @ AIR GAP 0.6mm REF
POWER CONSUMPTION	49 WATTS MAX.
BELT TYPE	PV8 TYPE
MAXIMUM ALLOWABLE BELT TENSION	120 kgf
PULLEY DIAMETER	119 mm (4.68 in.)
CLUTCH TYPE	HEAVY DUTY

NOTES:

1. COMPRESSOR/CLUTCH MUST CONFORM TO THE REQUIREMENTS OF SANDEN STANDARDS SES-214 REV. B AND SIA-ES-2002 REV. B.
2. N₂ HOLDING CHARGE DELETED.

REV. LEVEL	RELEASED FOR DESIGN DEVELOPMENT	<p>SANDEN INTERNATIONAL (U.S.A.), INC.</p>
APPRV.	J Sakowski	
CHK.	W Harrington	<p>DRAWN SCALE REF 1:1</p> <p>PLOTTED SCALE REF 1:1</p> <p>METRIC</p>
DATE	7/9/03	
REV. LEVEL	RELEASED FOR DESIGN VALIDATION	<p>This drawing and the information contained herein are CONFIDENTIAL and PROPRIETARY to Sanden International (U.S.A.), Inc. and, if disclosed to others without the written permission of Sanden International (U.S.A.), Inc.</p>
APPRV.	W Harrington	
CHK.	W Harrington	<p>INTERPRETATION OF THIS DRAWING PER ASME Y14.5M-1994</p>
DATE	7/9/03	
REV. LEVEL	RELEASED FOR PRODUCTION VAL. S.	<p>THIRD ANGLE PROJECTION</p>
APPRV.	W Harrington	
CHK.	W Harrington	<p>MATERIAL:</p>
DATE	7/9/03	
REV. LEVEL	RELEASED FOR PRODUCTION	<p>NAME</p> <p>COMPRESSOR</p>
APPRV.	W Harrington	
CHK.	W Harrington	<p>DWG. NO.</p> <p>4753-AFT-6000</p>
DATE	7/9/03	
REV. LEVEL	RELEASED FOR PRODUCTION	<p>REV</p> <p>A</p>
APPRV.	W Harrington	
CHK.	W Harrington	
DATE	7/9/03	

DO NOT SCALE