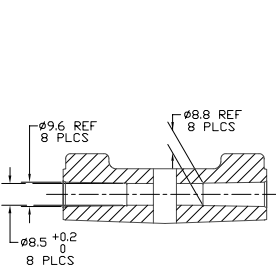
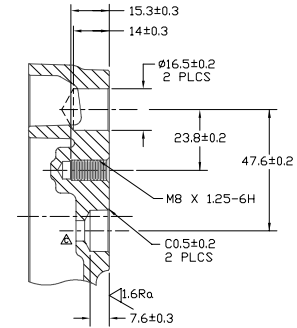
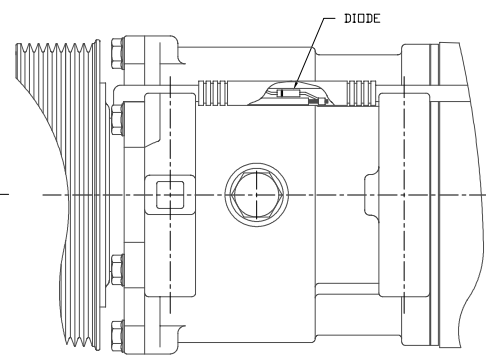


DETAIL C
SCALE 3:1

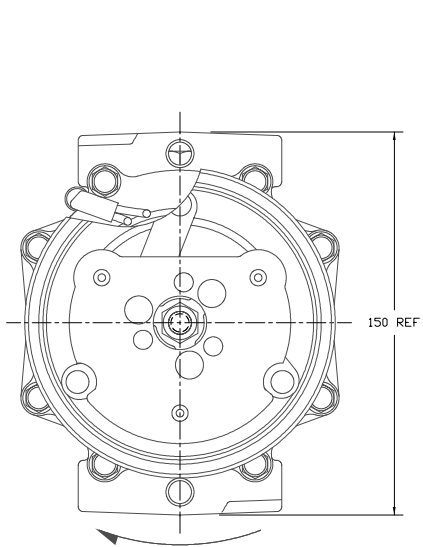
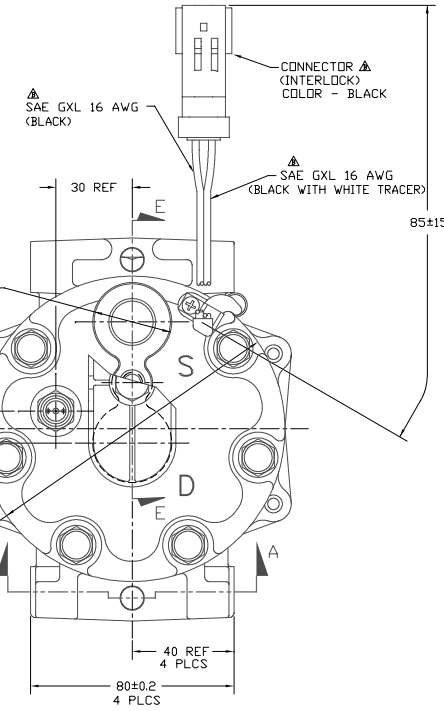
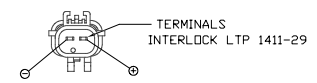


SECTION A-A

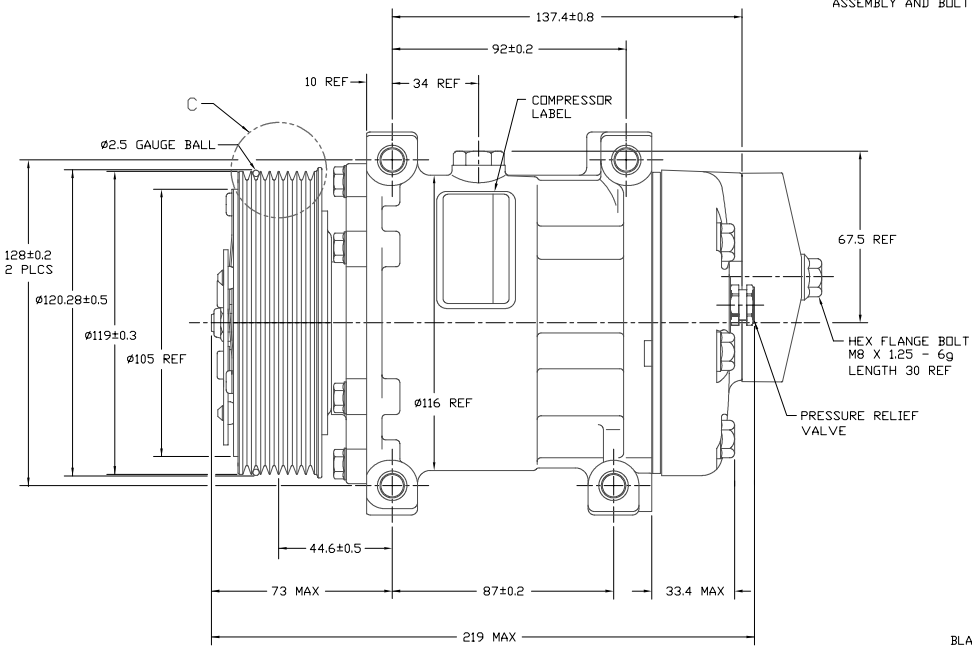


SECTION E-E
(SECTION WITH SHIPPING PAD ASSEMBLY AND BOLT REMOVED)

PCSN	REV	APPV DATE	REVISIONS	BYN	ESGN	CHK	APPV
			INITIAL RELEASE				
2003186	7/16/03		REMOVED CONNECTOR PART NUMBER SP-15 WAS SP-20 SAE GXL 16 AVG (BLACK) WAS AVX 125 (BLACK). SAE GXL 16 AVG (BLACK) WITH WHITE TRACER WAS AVX 125 (BLACK) WHITE TRACER. DIODE POLARITY WAS CIRCUIT DIAGRAM	JS	JW	HF	NB
2002899	3/3/06		UPDATED DISCHARGE ORIFICE DIAMETER	JS	JB	DRL	JV NB



CLOCKWISE ROTATION



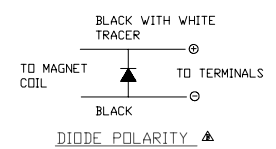
- NOTES:
- COMPRESSOR/CLUTCH MUST CONFORM TO THE REQUIREMENTS OF SANDEN STANDARDS SES-214 REV. B AND STA-ES-2002 REV. B.
 - N₂ HOLDING CHARGE DELETED.

COMPRESSOR SPECIFICATIONS (REF)

DISPLACEMENT PER REVOLUTION	154.9 cc / rev. (9.5cuin. / rev.)
MAXIMUM ALLOWABLE R.P.M.	8000 R.P.M.
MAXIMUM ALLOWABLE CONTINUOUS R.P.M.	6000 R.P.M.
REFRIGERANT	R134a
▲ OIL (SP-15)	210 cc ±10 cc (7.1 floz.)
▲ WEIGHT	6.9 kg (15.1 lb.)
▲ PRV OPENING PRESSURE RANGE	500-600 PSIG (35.2-42.2 kg/cm ² G)

CLUTCH SPECIFICATIONS (REF)

RATED VOLTAGE	DC 12V
BREAKAWAY TORQUE	3.5 kgf·m min. @ 12V
▲ MINIMUM ENGAGEMENT VOLTAGE	7.5V max @ AIR GAP 0.6mm
POWER CONSUMPTION	49 watts max.
BELT TYPE	PV8 TYPE
MAXIMUM ALLOWABLE BELT TENSION	120 kgf
PULLEY DIAMETER	Ø119mm (4.69 in.)
CLUTCH TYPE	STANDARD



REV. LEVEL	RELEASED FOR	SCALE	REF	PLOTTED	SCALE	REF
A	DESIGN DEVELOPMENT	1:1		1:1		METRIC
A	DESIGN VALIDATION					
A	PRODUCTION					

SANDEN
SANDEN INTERNATIONAL CORPORATION, INC.

This drawing and the information contained herein are CONFIDENTIAL and PROPRIETARY to Sanden International (U.S.A.), Inc. and shall be used, copied, or disclosed to others without the written permission of Sanden International (U.S.A.), Inc.

INTERPRETATION OF THIS DRAWING PER ASME Y14.5M-1994

THIRD ANGLE PROJECTION

MATERIAL:

NAME: COMPRESSOR

DWG. NO. 4775-AFT-6000

DO NOT SCALE