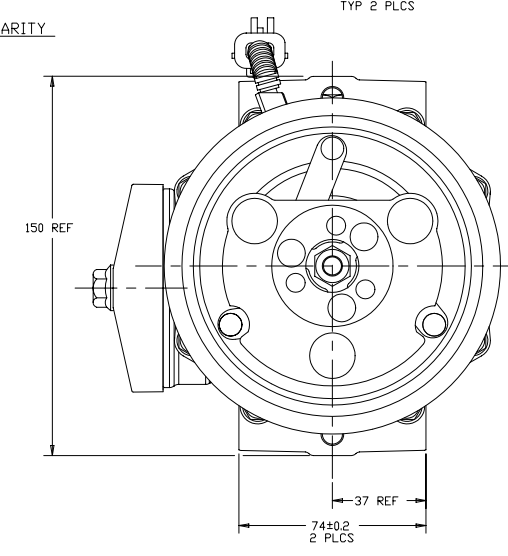
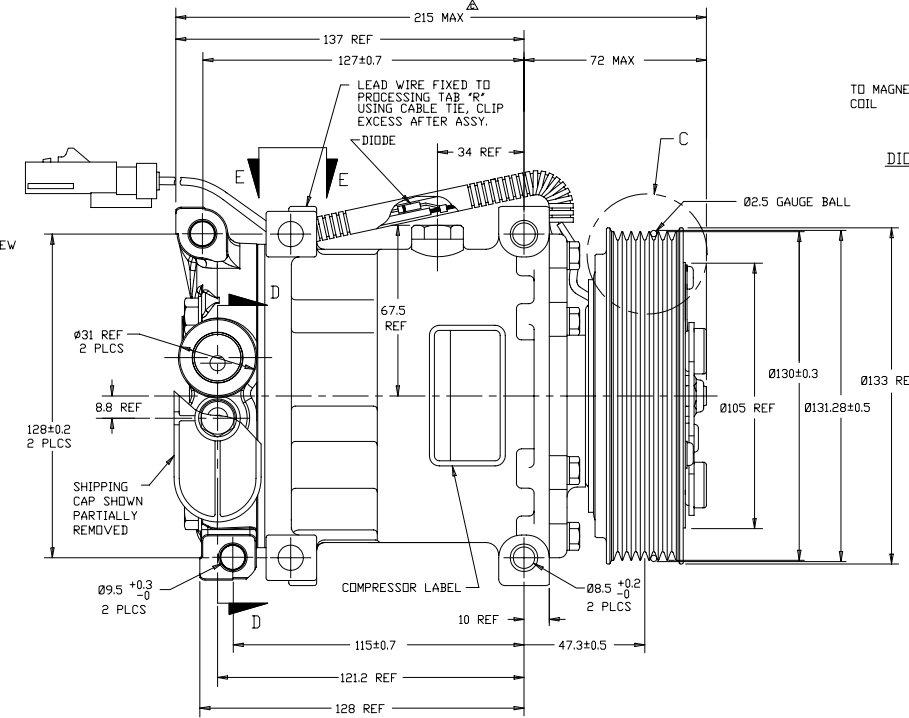
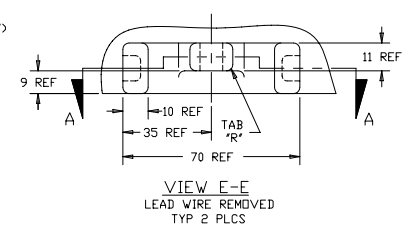
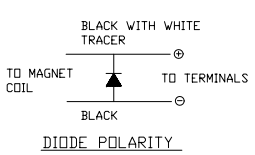
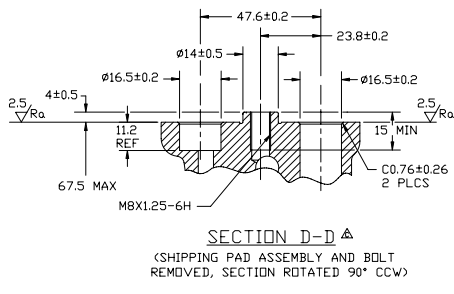
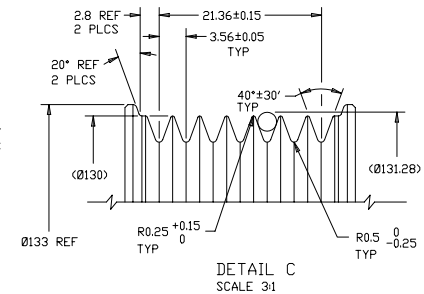
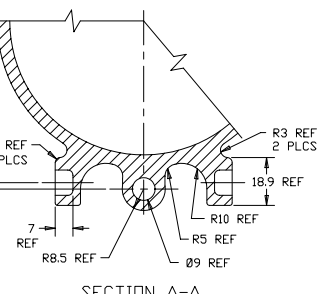
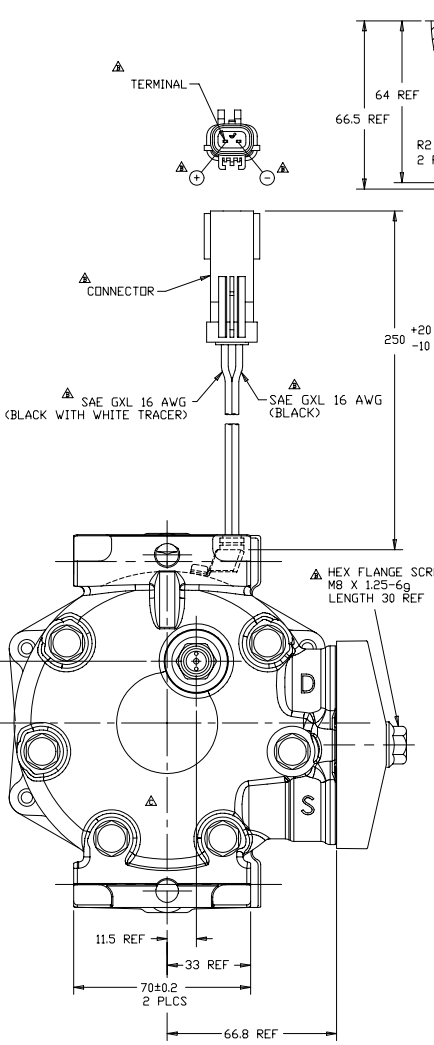


16 | 15 | 14 | 13 | 12 | 11 | 10 | 9 | 8 | 7 | 6 | 5 | 4 | 3 | 2 | 1

PN	REV.	APPLY DATE	REVISIONS	DWN	ESGN	CHK	APPV
			INITIAL ISSUE				
			REMOVE TERMINAL PART NUMBERS				
200387	07/01/03		SAE OIL 16 AWG BLACK WITH WHITE TRACER SAE OIL 16 AWG VAS SAE OIL 16 AWG (BLACK)	JK	JW	JK	JW
200470	03/19/03		LEADED DETAIL B, S EIS MAX WAS EIS MAX DIAPHRAGM HOLES WAS 210cc PRV OPENING PRESSURE 500-600 PSIG (35.2-42.2 kg/cm ² G) VAC 308-395 PSIG (21.7-28.1 kg/cm ² G) REMOVED "4855000" FROM HEAD	JK	JW	JK	JW



COMPRESSOR SPECIFICATIONS

DISPLACEMENT PER REVOLUTION	154.9 cc / rev. (9.5 cu.in. / rev.)
MAXIMUM ALLOWABLE R.P.M.	8000 r.p.m.
MAXIMUM ALLOWABLE CONTINUOUS R.P.M.	6000 r.p.m.
REFRIGERANT	R134a
OIL (SP-15)	300cc
WEIGHT	7.5 kg (16.5 lb.) REF
PRV OPENING PRESSURE RANGE	500-600 PSIG (35.2-42.2 kg/cm ² G)

CLUTCH SPECIFICATIONS

RATED VOLTAGE	DC 12V
BREAKAWAY TORQUE	3.5 kgf-m MIN @ 12V
MINIMUM ENGAGEMENT VOLTAGE	7.5V max @ AIR GAP 0.6mm REF
POWER CONSUMPTION	49 WATTS MAX REF
BELT TYPE	PV7
MAXIMUM ALLOWABLE BELT TENSION	105 kgf
PULLEY DIAMETER	Ø130 (Ø5.12 in.)
CLUTCH TYPE	STANDARD

- NOTES:
1. COMPRESSOR/CLUTCH MUST CONFORM TO THE REQUIREMENTS OF SANDEN STANDARDS SES-214 REV. B AND SIA-ES-2002 REV. B.
 2. N₂ HOLDING CHARGE DELETED.

REV. LEVEL	RELEASED FOR PRODUCTION	<p>SANDEN INTERNATIONAL (U.S.A.), INC. SCALE REF 1:1</p>	<p>PLATTER SCALE REF 1:1</p> <p>METRIC</p>
A	APPLY DATE 04/08/03		
APV	APPLY DATE 04/08/03	<p>This drawing and the information contained herein are CONFIDENTIAL and PROPRIETARY to Sanden International (U.S.A.), Inc. and may be disclosed to others without the written permission of Sanden International (U.S.A.), Inc.</p>	
REV. LEVEL	RELEASED FOR DESIGN VALIDATION	<p>INTERPRETATION OF THIS DRAWING PER THIRD ANGLE PROJECTION</p>	
A	APPLY DATE 04/08/03	<p>SIZE D</p>	
REV. LEVEL	RELEASED FOR PRODUCTION VAL. S.	<p>MATERIAL -</p>	
A	APPLY DATE 04/08/03	<p>NAME</p>	
REV. LEVEL	RELEASED FOR PRODUCTION	<p>COMPRESSOR</p>	
A	APPLY DATE 04/08/03	DWG. NO.	4846-AFT-6000
		REV. C	

DO NOT SCALE

16 | 15 | 14 | 13 | 12 | 11 | 10 | 9 | 8 | 7 | 6 | 5 | 4 | 3 | 2 | 1