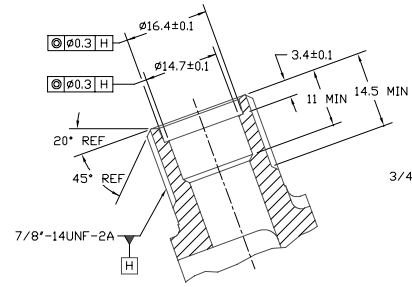
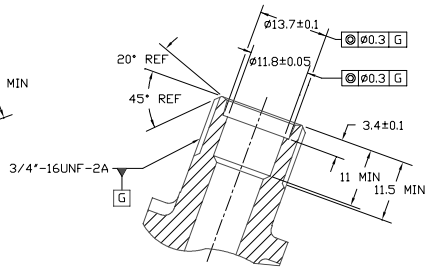


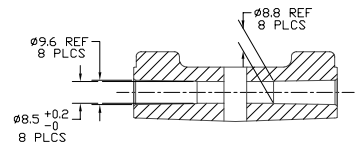
SEE NOTE 2.



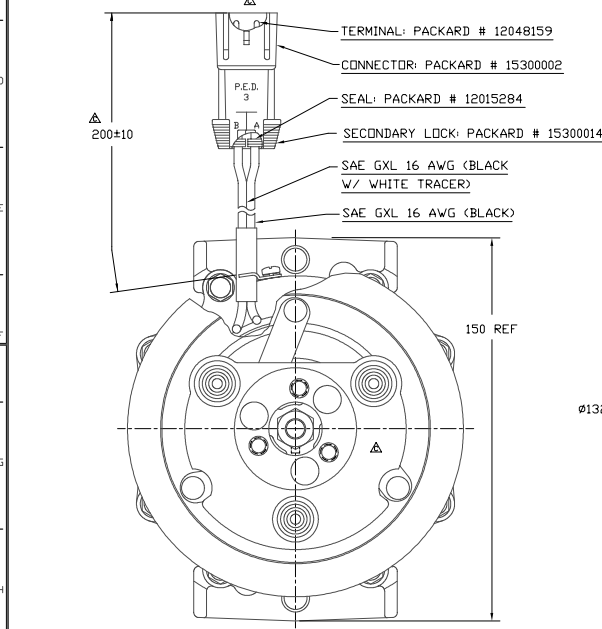
SECTION B-B  
SCALE 2:1  
(SECTION SHOWN WITH SEAL CAP REMOVED)



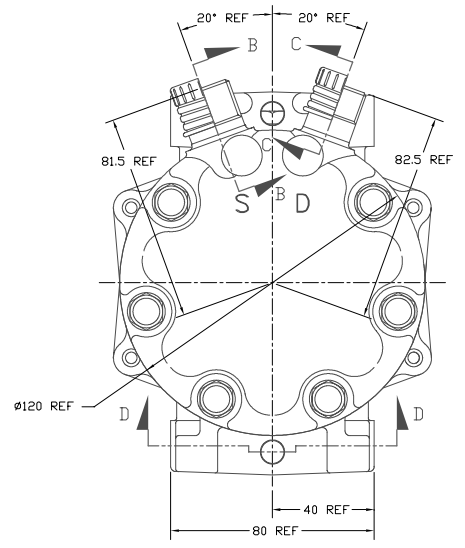
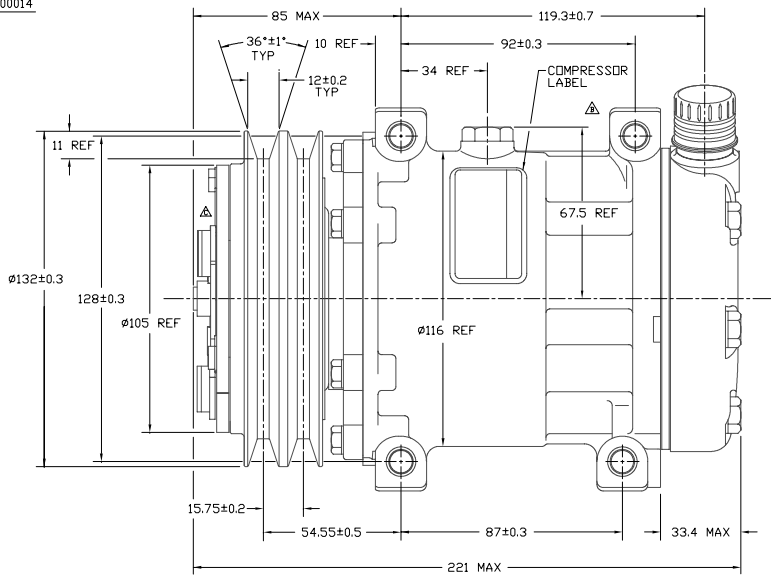
SECTION C-C  
SCALE 2:1  
(SECTION SHOWN WITH SEAL CAP REMOVED)



SECTION D-D



CLOCKWISE ROTATION



PCSN	REV	APPV DATE	REVISIONS	BY	CHK	APPV
			INITIAL RELEASE			
000000		10/22/01	REMOVED TAB FROM CYLINDER BLOCK. OIL (SP-15) WAS OIL (SP-20)	RSR	CMC	DRL DS
0000193		8/23/02	ARMATURE 6374-6030 WAS 6730-6030. COIL 6736-6140 WAS 6745-6040. 200310 WAS 00010. ADDED JUMPER ASSY 4894-6040 AND NOTE 2.	JS	DS	DRL NB
0000138		5/27/03	SAE GXL 16 AWG (BLACK) WAS AVX 125 (BLACK). SAE GXL 16 AWG (BLACK W/WHITE TRACER) WAS AVX 125 (BLACK W/ WHITE TRACER).	JS	HF	DRL BP NB

COMPRESSOR SPECIFICATIONS

DISPLACEMENT PER REVOLUTION	154.9 cc / rev. ( 9.5cu.in. / rev. )
MAXIMUM ALLOWABLE R.P.M.	8000 R.P.M.
MAXIMUM ALLOWABLE CONTINUOUS R.P.M.	6000 R.P.M.
REFRIGERANT	R134a
DIL ( SP-15 )	300 cc ( 10.1 fl.oz. )
WEIGHT	7.4 kg ( 16.4 lb. )

CLUTCH SPECIFICATIONS

RATED VOLTAGE	DC 12V
BREAKAWAY TORQUE	3.5 kgf-m min. @ 12V
MINIMUM ENGAGEMENT VOLTAGE	7.5V @ AIR GAP 0.6mm REF
POWER CONSUMPTION	49 watts max.
BELT TYPE	A TYPE
MAXIMUM ALLOWABLE BELT TENSION	60 kgf PER BELT
PULLEY DIAMETER	$\phi 132$ mm ( 5.2 in. )
CLUTCH TYPE	HEAVY DUTY

NOTE:

- [G] AND [H] ARE THE OUTSIDE DIAMETERS OF 3/4"-16UNF-2A AND 7/8"-14UNF-2A, RESPECTIVELY.
- PACKAGE JUMPER ASSY IN 4"x6" 2 mil (REF) LDPE ZIPPER-LOCK BAG.

REV. LEVEL	RELEASED FOR PRODUCTION	DATE	03/29/01
DESIGN	D. Clark	DATE	03/29/01
CHK	Dennis Lee	DATE	03/29/01
APPV	D. Seals	DATE	03/29/01
REV. LEVEL	DESIGN VALIDATION	DATE	03/29/01
DESIGN	D. Seals	DATE	03/29/01
CHK	C. Cozart	DATE	03/29/01
APPV	D. Seals	DATE	03/29/01
REV. LEVEL	RELEASED FOR PRODUCTION	DATE	03/29/01
DESIGN	C. Cozart	DATE	03/29/01
CHK	D. Seals	DATE	03/29/01
APPV	MB	DATE	5/27/03

**SANDEN**  
SANDEN INTERNATIONAL CORPORATION, INC.

SCALE REF 1:1 PLOTTED SCALE REF 1:1 METRIC

THIS DRAWING AND THE INFORMATION CONTAINED HEREON ARE CONFIDENTIAL AND PROPRIETARY TO SANDEN INTERNATIONAL (U.S.A.), INC. AND ARE NOT TO BE REPRODUCED OR COPIED IN ANY MANNER WITHOUT THE WRITTEN PERMISSION OF SANDEN INTERNATIONAL (U.S.A.), INC.

INTERPRETATION OF THIS DRAWING PER ASME Y14.5M-1994

THIRD ANGLE PROJECTION

MATERIAL:

NAME: SD7H15JD4894

COMPRESSOR

DWG. NO. 4894-6000

REV. D

DO NOT SCALE