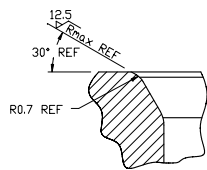
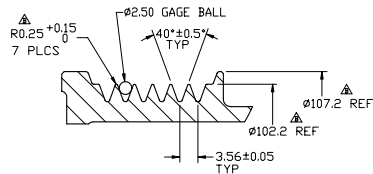


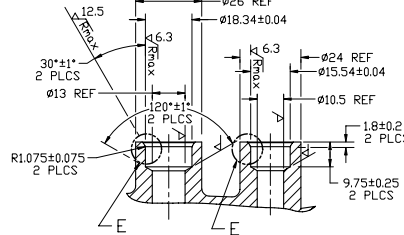
VIEW B-B
(VIEW SHOWN WITH SHIPPING PADS REMOVED)



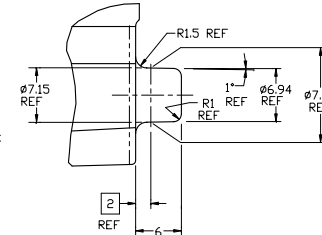
DETAIL E
SCALE 10:1
2 PLCS



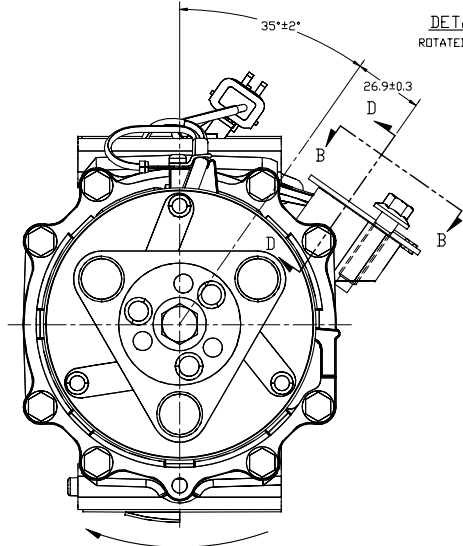
DETAIL C
SCALE: 2:1



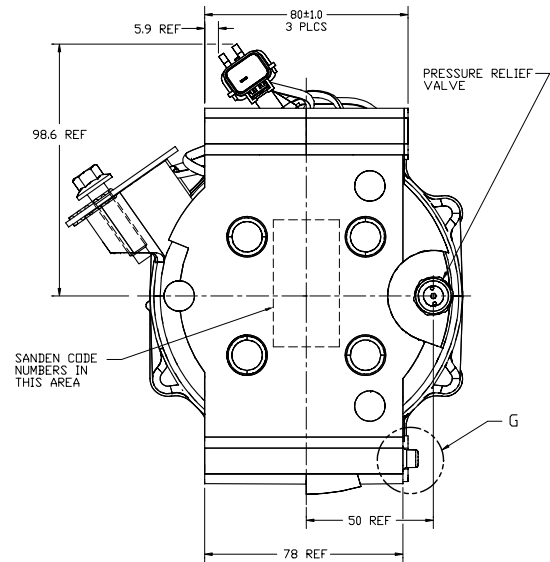
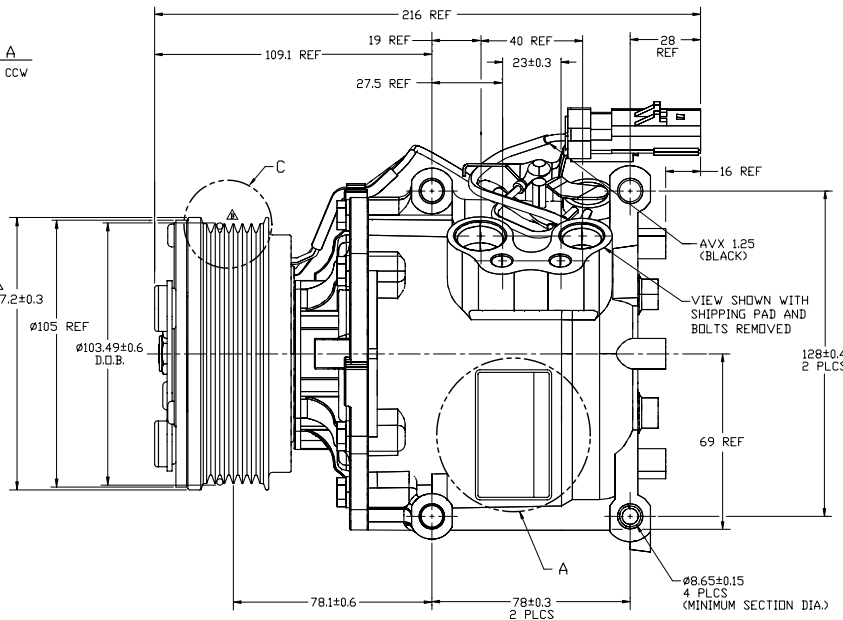
SECTION D-D



DETAIL G
SCALE 3:1



DETAIL A
ROTATED 90° CCW



PRN	REV.	APPV DATE	REVISIONS	DWN	ESGN	CHK	APPV
			INITIAL RELEASE				
800284		5/7/04	#1072#10 WAS #106.310, #107.2 REF WAS #106 REF, #025 15 7 PLCS WAS #044-5015 7 PLCS	JS	KS	HF	RG
800483			#107.2 REF WAS #102.5 EFFECTIVE, CHANGED TO MACHINED ROTOR.	RSR	MH	DRL	TK
			CHANGE TO NEW LABEL FORMAT				

CLOCKWISE ROTATION

COMPRESSOR SPECIFICATIONS

DISPLACEMENT PER REVOLUTION	85.7 cc/rev (5.2 in ³ /rev)
MAXIMUM ALLOWABLE INSTANTANEOUS R.P.M.	12000 R.P.M.
REFRIGERANT	R134a
OIL (SP-15)	150cc (5 fl. oz.)
WEIGHT	36.5 N (8.19 lb, 3.72 kgf)

CLUTCH SPECIFICATIONS

RATED VOLTAGE	12V DC
CURRENT DRAW	4.37 AMPS MAX @ 14V
BREAKAWAY TORQUE	Min 31.4 N m (23.1 ft lbF, 3.2 kgf m) AT 12V
MINIMUM ENGAGEMENT VOLTAGE	7.5V @ AIR GAP 0.5mm REF
POWER CONSUMPTION	50 WATTS MAX
BELT TYPE	PV6 GROOVE TYPE
MAXIMUM ALLOWABLE BELT TENSION	883 N (198 lbF, 90 kgf)
PULLEY DIAMETER	DIAMETER OVER BALL Ø103.49 mm (4.07 in.)
WEIGHT	19.4 N (4.36 lb, 1.98 kgf)
CLUTCH TYPE	STANDARD AUTOMOTIVE CLUTCH

RECOMMENDED CLUTCH CYCLING RATE

RPM	ALLOWABLE CYCLING RATE
TO 9000	4/MIN. MAX
9000-11000	2/MIN. MAX
OVER 11000	DO NOT RE-ENGAGE CLUTCH IF DISENGAGED

THERMAL PROTECTOR SWITCH SPECIFICATIONS

TYPE	BIMETAL
CUT OFF TEMPERATURE	125° ± 3°C (257° ± 5°F)
CUT IN TEMPERATURE	110° ± 6°C (230° ± 10°F)

PRESSURE RELIEF VALVE SPECIFICATIONS

OPENING PRESSURE	379.5±34.5 N/m ² (55.0±5.0 PSI, 38.7±3.5 kgf/m ²)
------------------	--

NOTES:

1. COMPRESSOR/CLUTCH MUST CONFORM TO THE REQUIREMENTS OF SANDEN STANDARDS SES-316 AND SIA-ES-2002 REV. B.
2. VOLUMETRIC EFFICIENCY, CAPACITY AND HORSEPOWER TO BE TESTED PER SANDEN ENGINEERING STANDARD SES-CC-316 (04/01/93).

REV. LEVEL	RELEASED FOR PRODUCTION	DATE	BY	SCALE REF	1:1	PLATED	SCALE REF	1:1	METRIC
A	APPROVED	8/28/03	M. Harrington						
A	APPROVED	8/28/03	M. Harrington						
A	APPROVED	8/28/03	M. Harrington						
A	APPROVED	8/28/03	M. Harrington						
A	APPROVED	8/28/03	M. Harrington						

SANDEN
SANDEN INTERNATIONAL U.S.A., INC.
This drawing and the information contained hereon are CONFIDENTIAL and PROPRIETARY to Sanden International U.S.A., Inc. and shall not be used, copied or disclosed to others without the written permission of Sanden International U.S.A., Inc.

INTERPRETATION OF THIS DRAWING PER ASME Y14.5M-1994

THIRD ANGLE PROJECTION

MATERIAL:

NAME: COMPRESSOR

DATE: 8/28/03

REV. NO. 4976-AFT-6000

REV. C

DO NOT SCALE