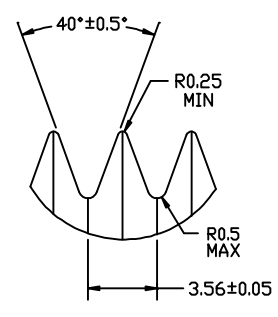
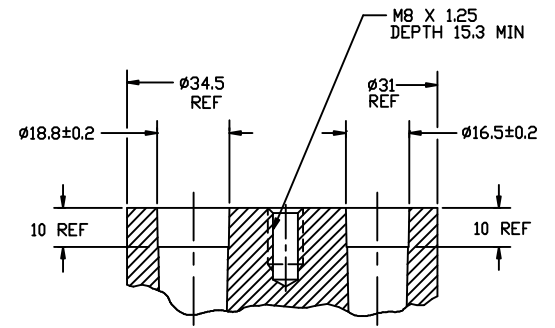


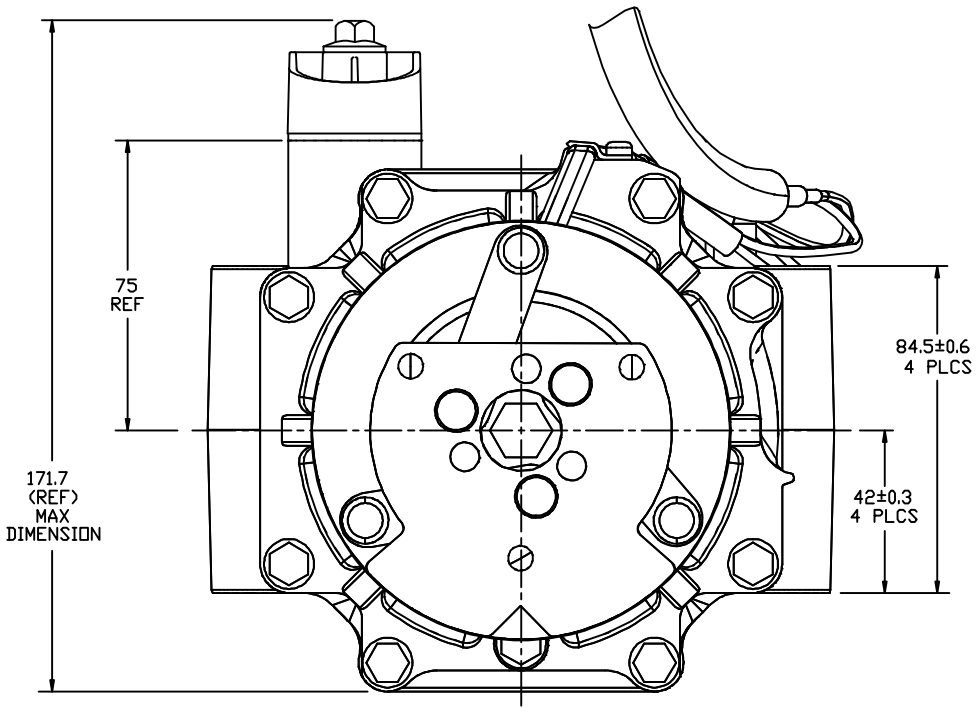
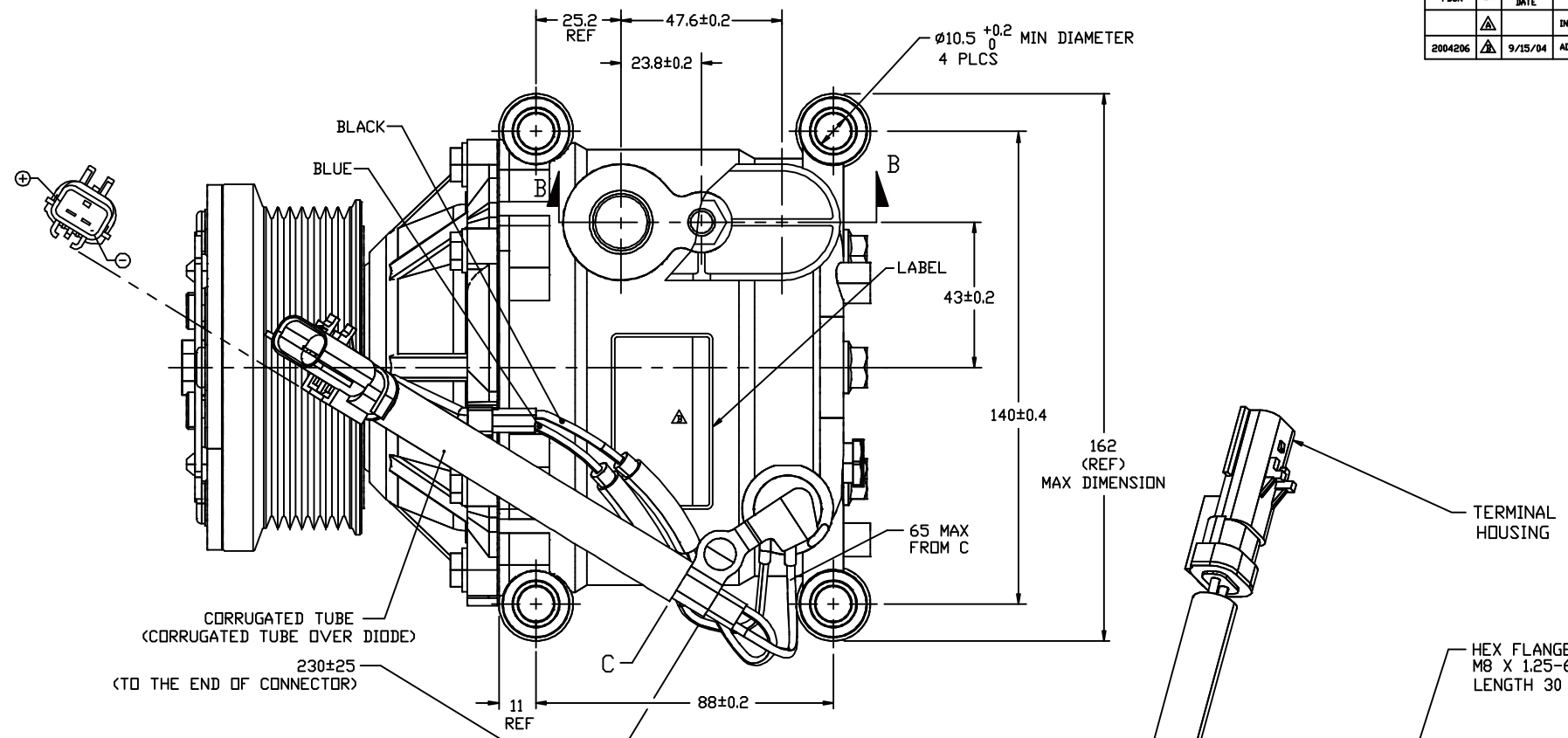
PDRN	REV.	APPV DATE	REVISIONS	BY	DSGN	CHK	APPV
2004206	A	9/15/04	ADDED LINE TO COMPRESSOR LABEL	JS	MH	DRL	TK



DETAIL A
SCALE 5:1



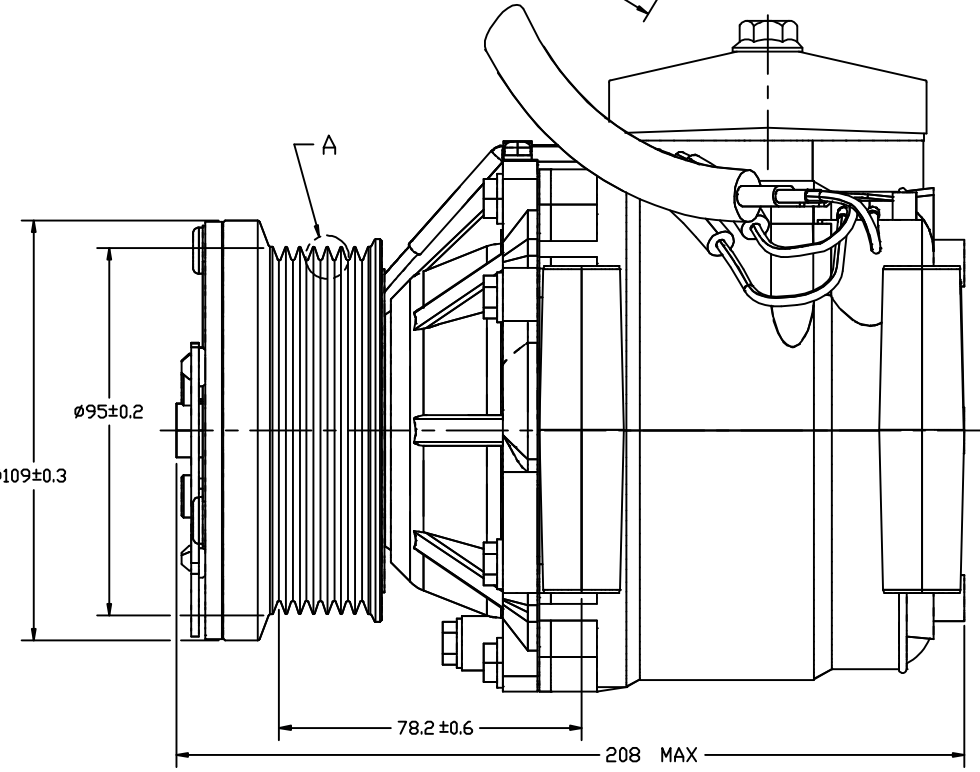
SECTION B-B



COMPRESSOR SPECIFICATIONS

DISPLACEMENT PER REVOLUTION	104.8cc/rev (6.4 in ³ /rev)
MAXIMUM ALLOWABLE INSTANTANEOUS R.P.M.	12000 R.P.M.
REFRIGERANT	R134a
OIL (SP-15)	240cc (14.6 fl. oz.)

- NOTES:
- COMPRESSOR/CLUTCH MUST CONFORM TO THE REQUIREMENTS OF SANDEN STANDARDS SES-316 AND SIA-ES-2002 REV. B.
 - VOLUMETRIC EFFICIENCY, CAPACITY AND HORSEPOWER TO BE TESTED PER SANDEN ENGINEERING STANDARD SES-CC-316 (04/01/93).



CLUTCH SPECIFICATIONS

RATED VOLTAGE	12V DC
LEAD WIRE LENGTH	230±25 mm
BREAKAWAY TORQUE	Min 35.3 N·m (26 ft·lbf, 3.6 kgf·m) AT 12V
MINIMUM ENGAGEMENT VOLTAGE	7.5V @ AIR GAP 0.5mm REF
POWER CONSUMPTION	50 WATTS MAX
BELT TYPE	PV7 GROOVE TYPE
MAXIMUM ALLOWABLE BELT TENSION	883 N (198 lbf, 90 kgf)
PULLEY DIAMETER	DIAMETER OVER BALL 95±0.2mm (Ø3.74in)
WEIGHT	23.7N (5.33lbf, 2.42kgf)
CLUTCH TYPE	STANDARD AUTOMOTIVE CLUTCH

RECOMMENDED CLUTCH CYCLING RATE

RPM	ALLOWABLE CYCLING RATE
TD 9000	4/MIN. MAX
9000-11000	2/MIN. MAX
OVER 11000	DO NOT RE-ENGAGE CLUTCH IF DISENGAGED.

PRESSURE RELIEF VALVE SPECIFICATIONS

OPENING PRESSURE	7.67±0.70 N/m ² (550±50 PSI, 0.782±0.07 kgf/m ²)
------------------	---

DO NOT SCALE

<p>RELEASED FOR ENGR. DEVELOPMENT BSSN Mark Hovington BY J Sokolowski DATE 6/10/08</p>		<p>SANDEN SANDEN INTERNATIONAL (U.S.A.), INC. DRAWN SCALE REF 1:1 PLOTTED SCALE REF 1:1 METRIC</p>
<p>RELEASED FOR DESIGN VALIDATION BSSN Mark Hovington APPV. DATE 6-10-08</p>		
<p>RELEASED FOR PRODUCTION VAL. B. BSSN Mark Hovington APPV. DATE 6-10-08</p>		<p>INTERPRETATION OF THIS DRAWING PER ASME Y14.5M-1994 THIRD ANGLE PROJECTION SIZE D</p>
<p>RELEASED FOR PRODUCTION BSSN Mark Hovington APPV. DATE 6-10-08</p>		<p>MATERIAL: NAME: COMPRESSOR</p>
<p>RELEASED FOR PRODUCTION BSSN Mark Hovington APPV. DATE 6-10-08</p>		<p>DWG. NO. 4979-AFT-6000 REV. B</p>