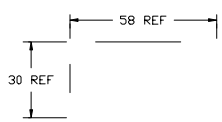
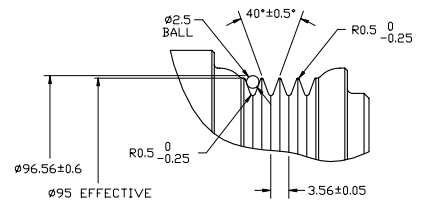


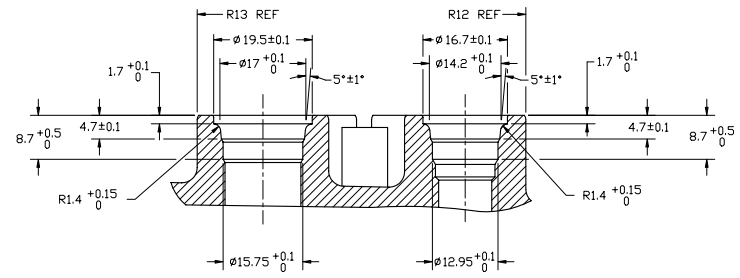
PCDN	REV	APPLY DATE	REVISIONS	DWN	ESGN	CHK	APPV
			INITIAL RELEASE REV. 4987-6000 REV. F.				



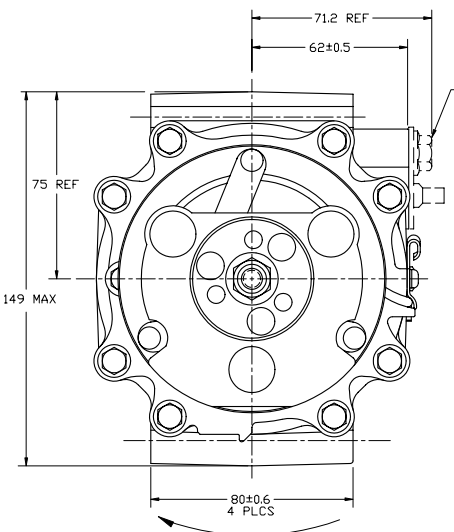
**DETAIL A**  
ROTATED 90° CCW



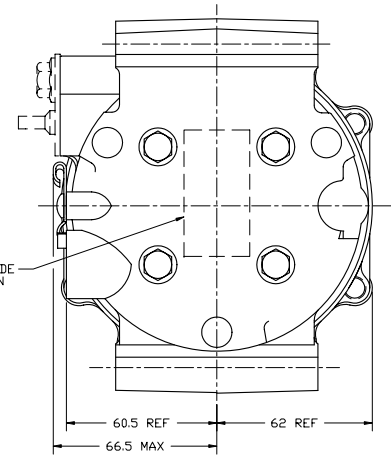
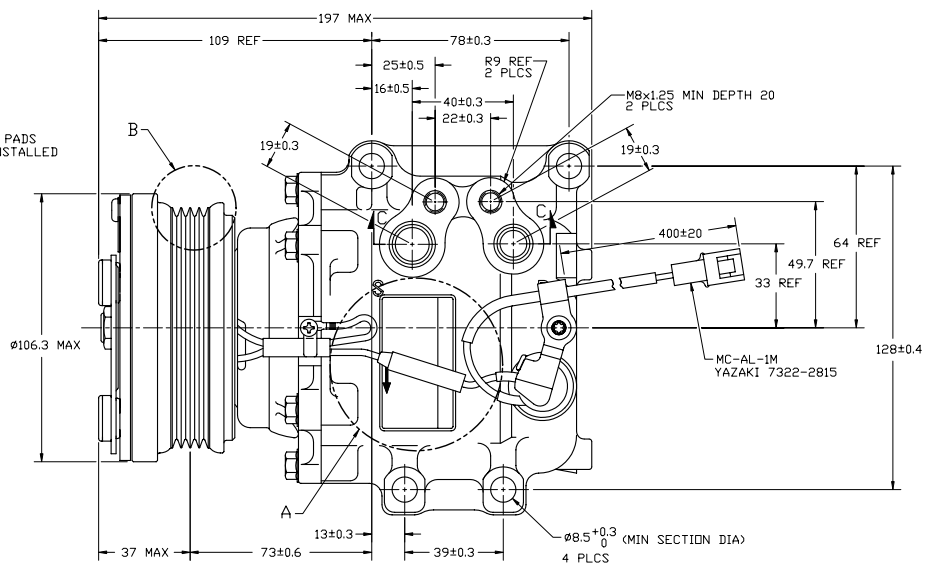
**DETAIL B**  
SCALE 2:1



**SECTION C-C**  
(SHIPPING PADS NOT SHOWN)  
SCALE 2:1



CLOCKWISE ROTATION



SANDEN CODE NUMBERS IN THIS AREA

NOTE  
1. THIS PRODUCT MUST CONFORM TO SANDEN ENGINEERING SPECIFICATION SES-CC-316.

**COMPRESSOR SPECIFICATIONS**

DISPLACEMENT PER REVOLUTION	89.7 cc/rev (5.2 in <sup>3</sup> /rev)
MAXIMUM ALLOWABLE SPEED	12000 R.P.M.
MAXIMUM ALLOWABLE CONTINUOUS SPEED	10000 R.P.M.
REFRIGERANT	R134a
OIL (SP-10)	120 cc (4.06 fl. oz.)
WEIGHT	37.3 N (8.4 lbf, 3.8 kgf)
ROTATION (CLUTCH SIDE VIEW)	CLOCKWISE

**CLUTCH SPECIFICATIONS**

RATED VOLTAGE	12V DC
BREAKAWAY TORQUE	Min 31.4 N·m (23.1 ft·lbf, 3.2 kgf·m) AT 12V
MINIMUM ENGAGEMENT VOLTAGE	7.5V AT AIR GAP 0.5 mm REF
POWER CONSUMPTION	48 WATTS MAX
BELT TYPE	PV4 GROOVE TYPE
MAXIMUM ALLOWABLE BELT TENSION	589 N (132 lbf, 60 kgf)
PULLEY DIAMETER	95 mm DIA (3.74 in)
WEIGHT	18.6 N (4.2 lbf, 1.9 kgf)
CLUTCH TYPE	STANDARD

**THERMAL PROTECTOR SPECIFICATIONS**

TYPE	BIMETAL
CUT OFF TEMPERATURE	135 ± 3°C ( 275 ± 5°F )
CUT IN TEMPERATURE	115 ± 6°C ( 239 ± 11°F )

REV. LEVEL	RELEASED FOR DESIGN DEVELOPMENT	<p><b>SANDEN</b> SANDEN INTERNATIONAL (U.S.A.), INC.</p>
PCDN	Shy D'Ann	
DWN	Spokowski	<p>SCALE REF 1:1 PLATTER SCALE REF 1:1 METRIC</p> <p>This drawing and the information contained herein are CONFIDENTIAL and PROPRIETARY to Sanden International (U.S.A.), Inc. and shall not be used, copied, or disclosed to others without the written permission of Sanden International (U.S.A.), Inc.</p>
CHK	Shy D'Ann	
APPLY DATE	6/22/04	<p>INTERPRETATION OF THIS DRAWING PER ASME Y14.5M-1994</p>
REV. LEVEL	RELEASED FOR DESIGN VALIDATION	
PCDN	Shy D'Ann	<p>THIRD ANGLE PROJECTION</p>
APPLY DATE	6/22/04	
REV. LEVEL	RELEASED FOR PRODUCTION VAL.	<p>MATERIAL</p>
PCDN	Shy D'Ann	
APPLY DATE	6/22/04	<p>NAME</p> <p>TRS090 COMPRESSOR</p>
REV. LEVEL	RELEASED FOR PRODUCTION	
PCDN	Shy D'Ann	<p>DWG. NO.</p> <p>4987-6000</p>
APPLY DATE	4/23/05	
REV. LEVEL	RELEASED FOR PRODUCTION	<p>REV. A</p>
PCDN	Shy D'Ann	

DO NOT SCALE