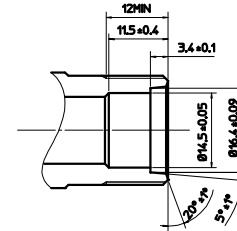
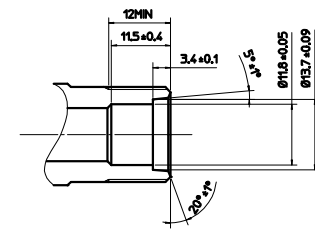


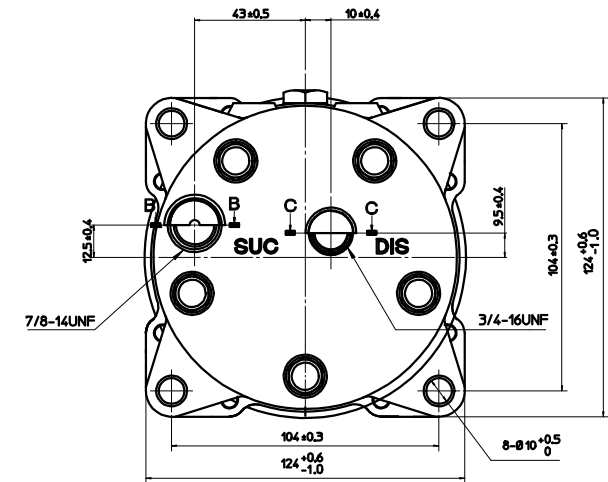
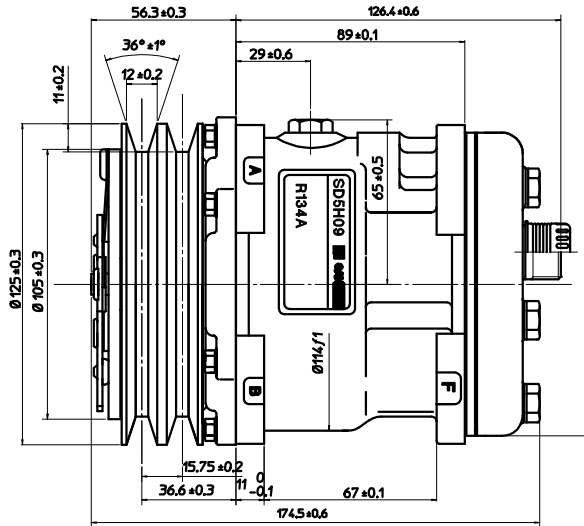
PARTIAL SECT A-A



PARTIAL SECT B-B (2:1)



PARTIAL SECT C-C (2:1)



COMPRESSOR SPECIFICATIONS

BORE	Ø35 mm
STROKE	18.07 mm
DISPLACEMENT PER REVOLUTION	87 cc/rev
NUMBER OF CYLINDERS	5
MAXIMUM ALLOWABLE r.p.m.	7500 r.p.m.
MAXIMUM ALLOWABLE CONTINUOUS r.p.m.	6500 r.p.m.
REFRIGERANT	R-134a
OIL (SP-20 OR EQUIV.)	100 cc
ROTATION (CLUTCH SIDE VIEW)	CLOCKWISE
WEIGHT	kg

CLUTCH SPECIFICATIONS

RATED VOLTAGE	DC 12 V
BREAKAWAY TORQUE	2.2 kg-m
MINIMUM ENGAGEMENT VOLTAGE	7.5 V max
POWER CONSUMPTION	48 W (AL)
MAXIMUM ALLOWABLE r.p.m.	7500 r.p.m.
MAXIMUM ALLOWABLE CONTINUOUS r.p.m.	6500 r.p.m.
BELT TYPE	A2
PULLEY DIAMETER	Ø125 mm
WEIGHT	kg

MATERIAL	PART NO.	NAME
	5077	COMPRESSOR
THIRD ANGLE PROJECTION	SCALE	
	1:1	
DRAWN BY	DATE	MODEL
Raymond	28.01.02	SD5H09K5077
CHECKED BY	DATE	DRAWING NO.
		5077-6000S
REVISION RECORD	BY	DATE