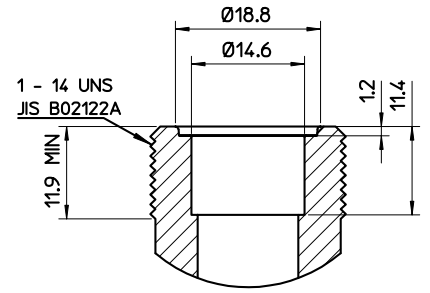
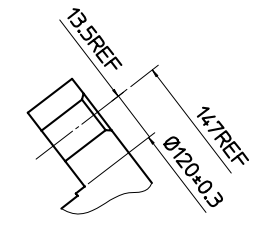


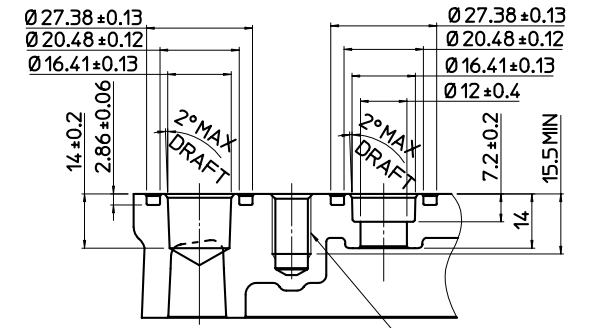
DETAIL OF ROTOR GROOVE(2:1)



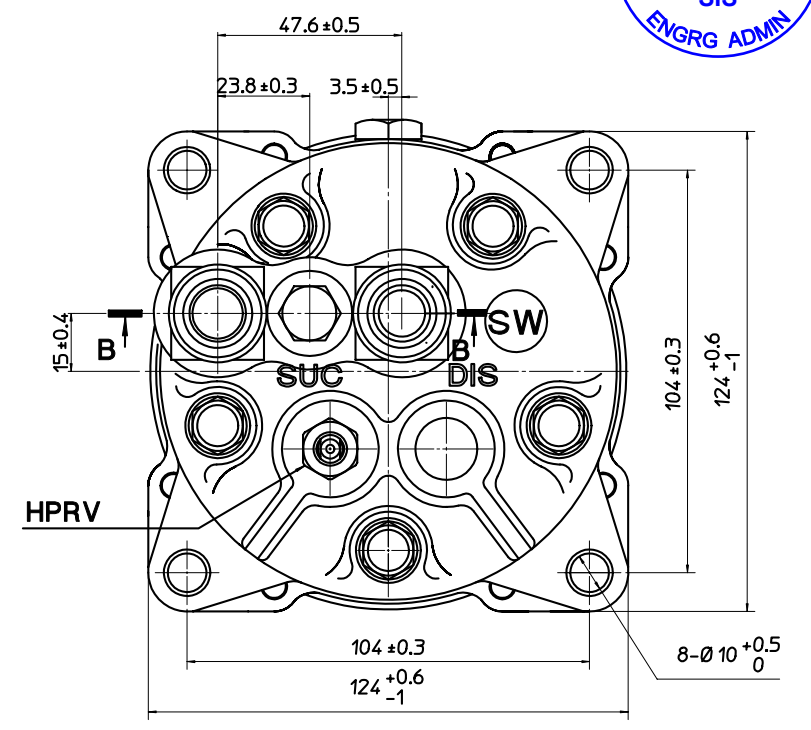
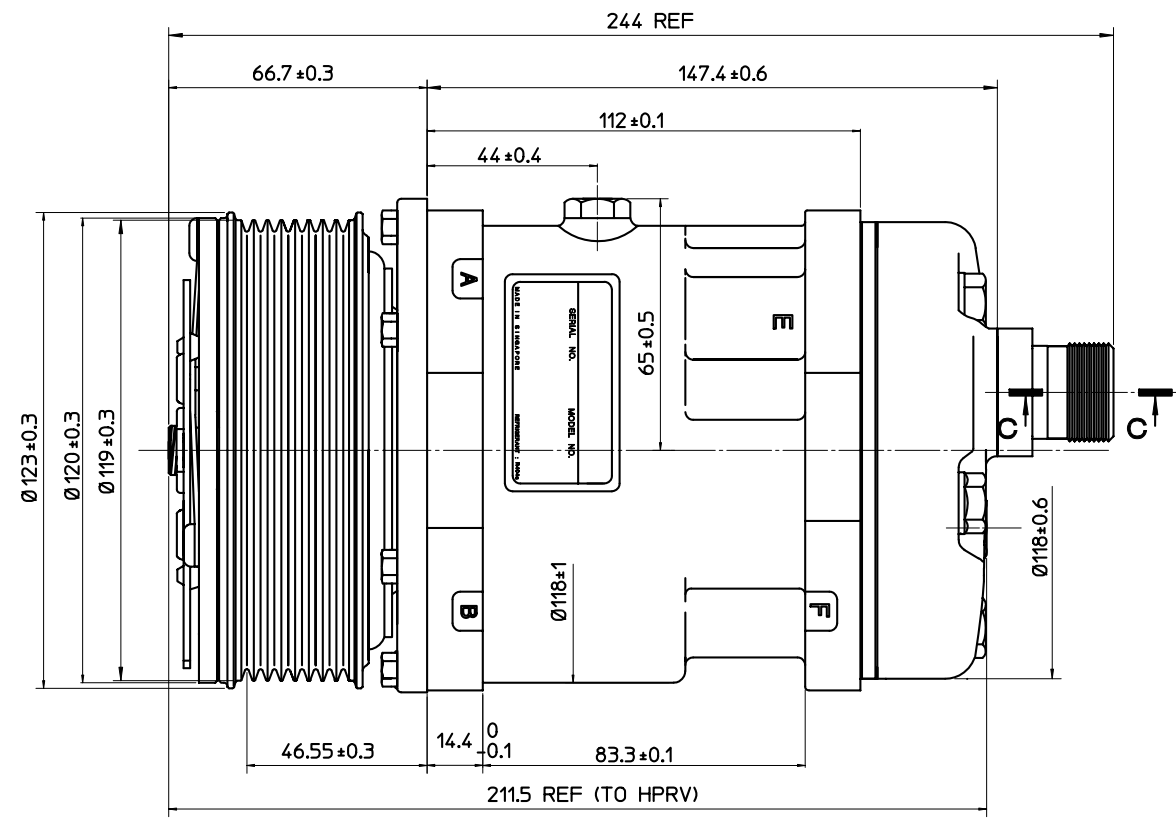
PARTIAL SECT C-C



PARTIAL SECT A-A



SECTION B-B

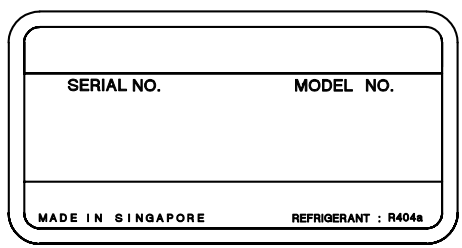


COMPRESSOR SPECIFICATIONS

BORE	Ø35 mm
STROKE	28.6 mm
DISPLACEMENT PER REVOLUTION	138 cc/rev
NUMBER OF CYLINDERS	5
MAXIMUM ALLOWABLE r.p.m.	4000 r.p.m.
MAXIMUM ALLOWABLE CONTINUOUS r.p.m.	3000 r.p.m.
REFRIGERANT	R404a
OIL (POE MOBIL ARTIC 68)	0 cc
ROTATION (CLUTCH SIDE VIEW)	CLOCKWISE
WEIGHT	kg

CLUTCH SPECIFICATIONS

RATED VOLTAGE	DC 12 V
BREAKAWAY TORQUE	3.5 kg-m
MINIMUM ENGAGEMENT VOLTAGE	7.5 V max
POWER CONSUMPTION	50W(AL)
MAXIMUM ALLOWABLE r.p.m.	4000 r.p.m.
MAXIMUM ALLOWABLE CONTINUOUS r.p.m.	3000 r.p.m.
BELT TYPE / NO. OF GROOVE	PV / 8
PULLEY DIAMETER	Ø119mm
WEIGHT	kg



LABEL (2 : 1)

PRESSURE RELIEF VALVE SPECIFICATION

RELIEF PRESSURE	MINIMUM 35.7kgf/cm2G MAXIMUM 41.8kgf/cm2G
EXHAUST FLOW	MINIMUM 113NL/min at 44.8kgf/cm2G
RESEALED PRESSURE	MINIMUM 30.7kgf/cm2G

△	MATERIAL	PART NO.	NAME
△		5350HR	COMPRESSOR
△	THIRD ANGLE PROJECTION	SCALE	
△		1:1	
△	DESIGN BY	DATE	MODEL
△	MICHAEL CHEE	03_03_2006	SD5L14SW5350HR
△	CHECKED BY	DATE	DRAWING NO.
△	M. TAKAHASHI	03_03_2006	5350 - 6000HR
△	APPROVED BY	DATE	
△	M. TAKAHASHI	03_03_2006	
No.	REVISION RECORD	BY	DATE