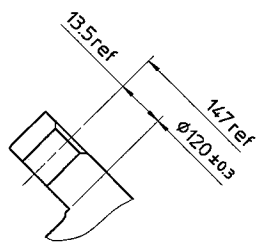
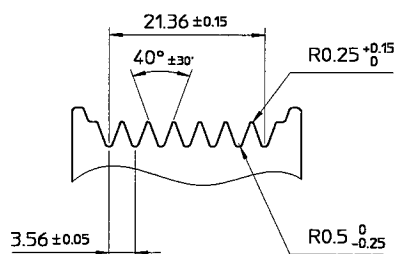


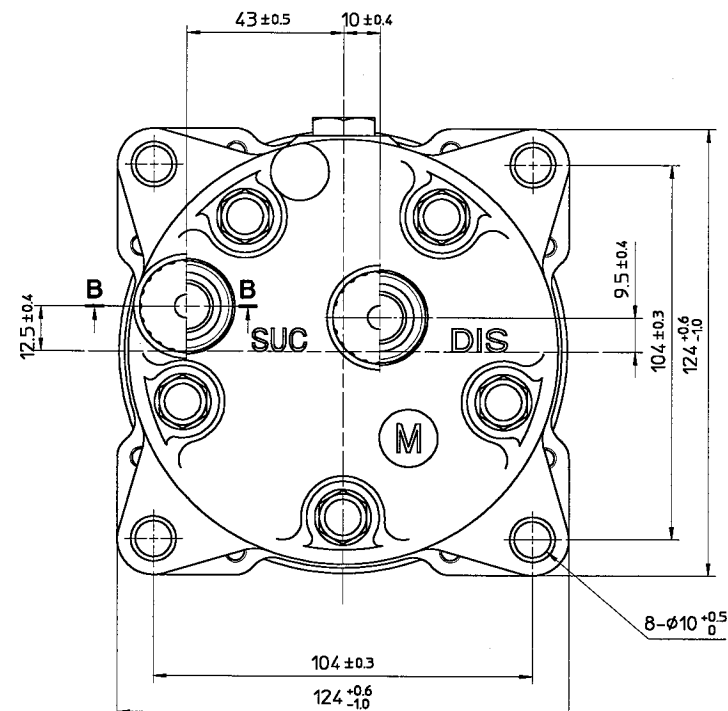
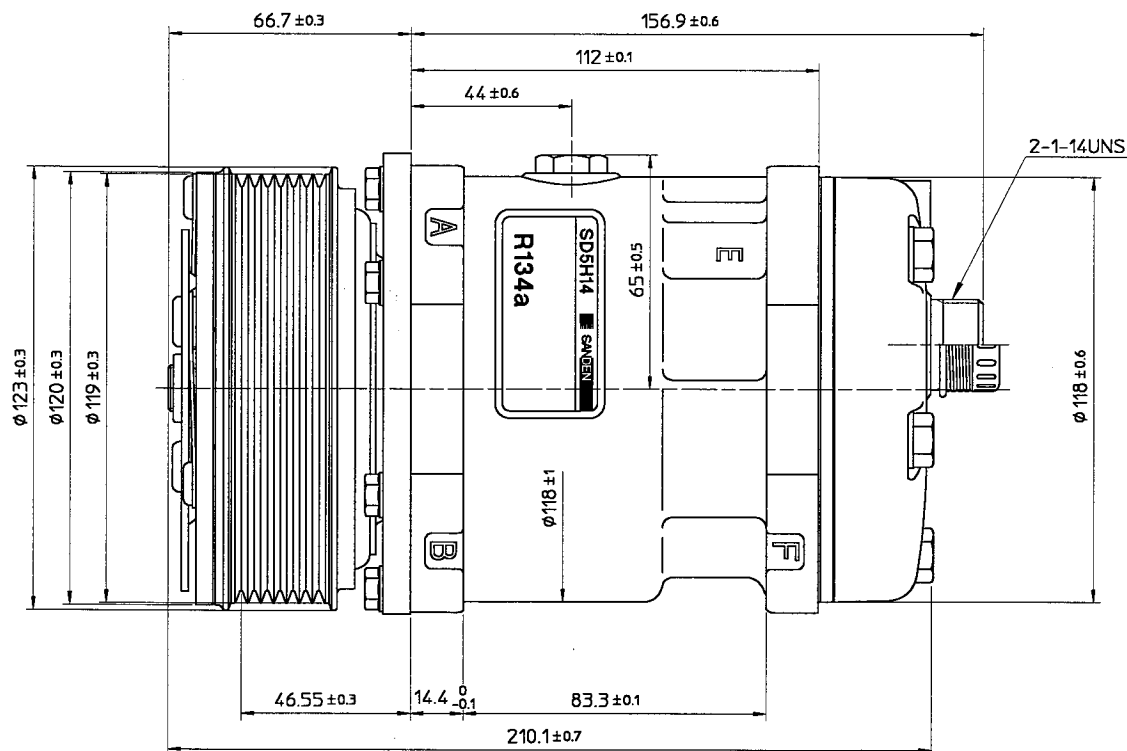
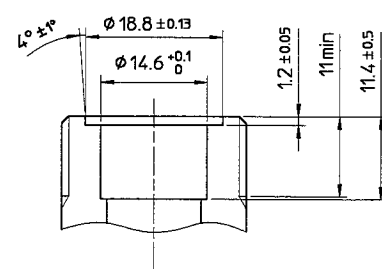
PARTIAL SECT. A-A



DETAIL OF ROTOR GROOVE (2:1)



PARTIAL SECT. B-B (2:1)



COMPRESSOR SPECIFICATIONS

BORE	Ø35 mm
STROKE	28.6 mm
NUMBER OF CYLINDERS	5
DISPLACEMENT PER REVOLUTION	138 cc/rev.
MAXIMUM ALLOWABLE CONTINUOUS SPEED	6000 r.p.m.
MAXIMUM DOWNSHIFT SPEED	7000 r.p.m.
REFRIGERANT	R-134a
OIL	SP-20 OR EQUIVALENT
OIL CHARGE	210 cc
ROTATION	CLOCKWISE
WEIGHT	kg

CLUTCH SPECIFICATIONS

RATED VOLTAGE	DC 12 V
MINIMUM BREAKAWAY TORQUE	3.5 kg·m
MINIMUM ENGAGEMENT VOLTAGE	7.5 V
MAXIMUM POWER CONSUMPTION	50 W
MAXIMUM ALLOWABLE CONTINUOUS SPEED	6000 r.p.m.
MAXIMUM DOWNSHIFT SPEED	7000 r.p.m.
BELT TYPE	PV TYPE
PULLEY DIAMETER	Ø119 mm
WEIGHT	kg

SIE MASTER DRAWING
 CHECKED AND APPROVED BY *Andrew King*
 PRINT NAME *Andrew King*
 DATE *27/01/00*

DESIGNED BY	M.Fujii	DATE	16 Jun 1998	MODEL	SD5H14M6655
CHECKED BY	Y.Uchiyama	DATE	16 Jun 1998	DRAWING NO.	6655 - 6000
APPROVED BY	H.Chiyoda	DATE	16 Jun 1998		

NO.	REVISION RECORD	BY	DATE
-----	-----------------	----	------

UNCONTROLLED COPY