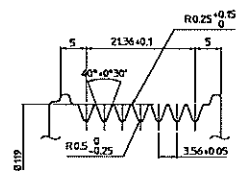
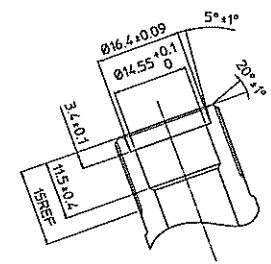


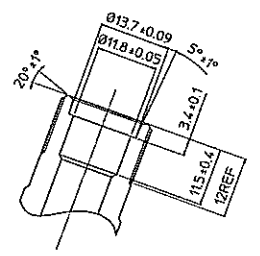
PARTIAL SECT A-A



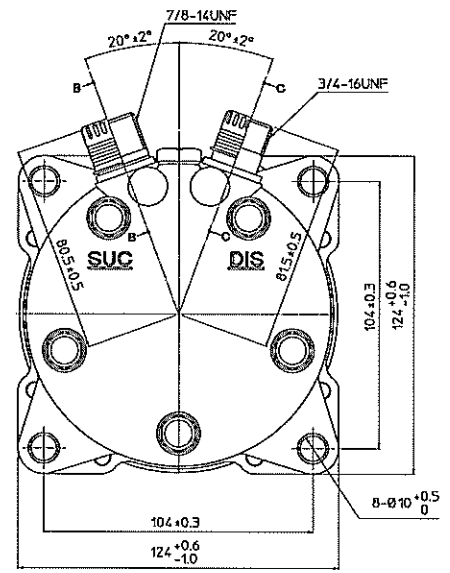
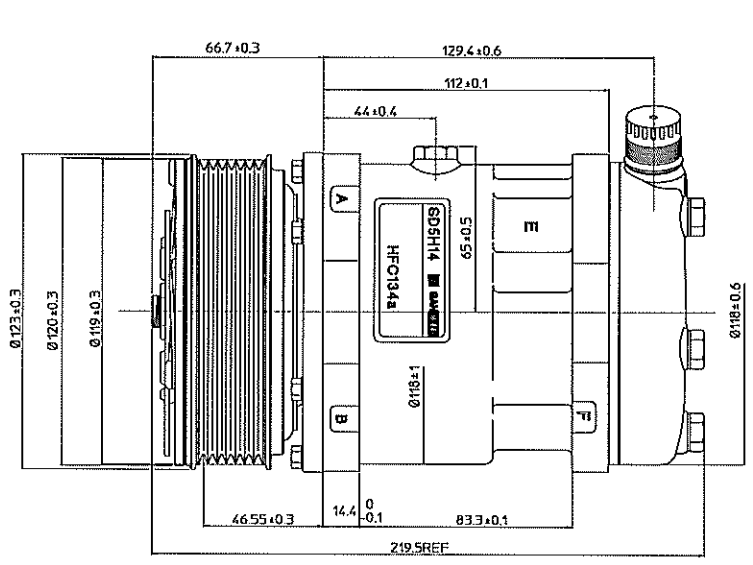
DETAIL OF ROTOR GROOVE(2:1)



PARTIAL SECT B-B (2:1)



PARTIAL SECT C-C (2:1)



COMPRESSOR SPECIFICATIONS

BORE	Ø35 mm
STROKE	28.6 mm
DISPLACEMENT PER REVOLUTION	138 cc/rev
NUMBER OF CYLINDERS	5
MAXIMUM ALLOWABLE r.p.m.	7000 r.p.m.
MAXIMUM ALLOWABLE CONTINUOUS r.p.m.	6000 r.p.m.
REFRIGERANT	HFC134a
OIL (SP-20 OR EQUIV.)	175 cc
ROTATION (CLUTCH SIDE VIEW)	CLOCKWISE
WEIGHT	kg

CLUTCH SPECIFICATIONS

RATED VOLTAGE	DC 12 V
BREAKAWAY TORQUE	3.5 kg-m
MINIMUM ENGAGEMENT VOLTAGE	7.5 V max
POWER CONSUMPTION	50 W (A.L.)
MAXIMUM ALLOWABLE r.p.m.	7000 r.p.m.
MAXIMUM ALLOWABLE CONTINUOUS r.p.m.	6000 r.p.m.
BELT TYPE	PV
PULLEY DIAMETER	Ø119 mm
WEIGHT	kg



REVISION RECORD	BY	DATE	MATERIAL	PART NO.	NAME
				6669	COMPRESSOR
			SCALE	1:1	
			DESIGN BY	CHECKED BY	MODEL
					SD5H14FL6669
					DRAWING NO.
					6669-6000S