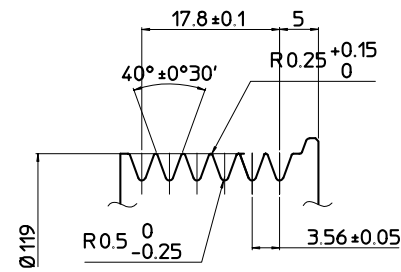
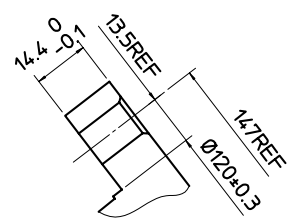


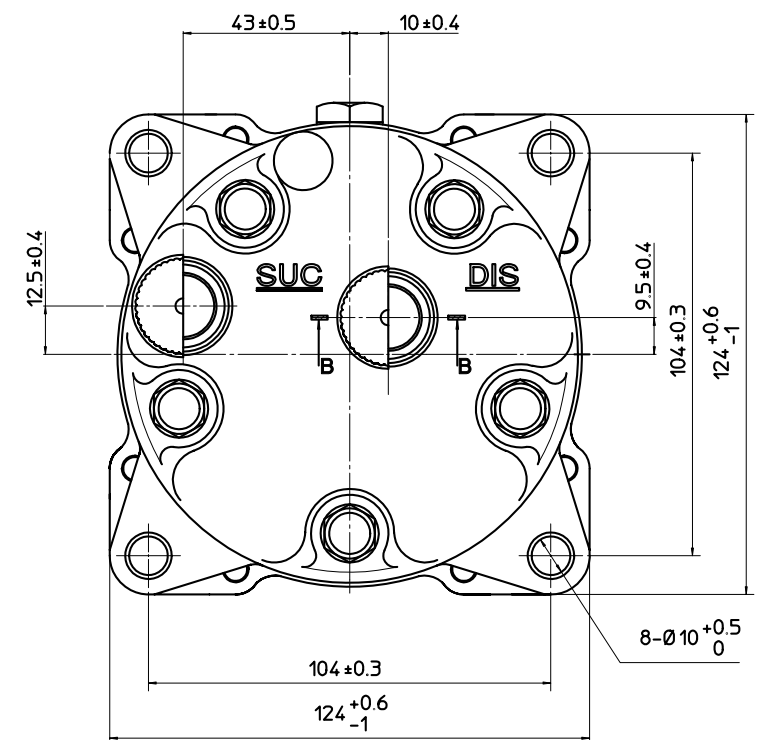
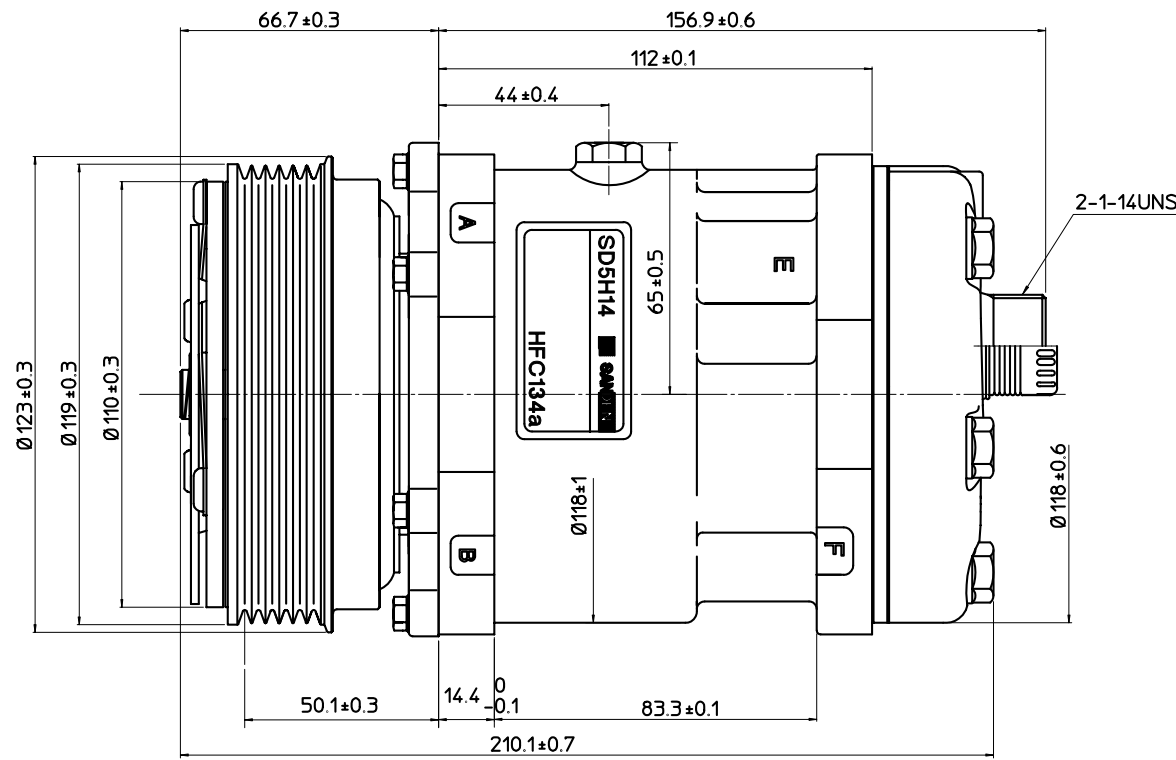
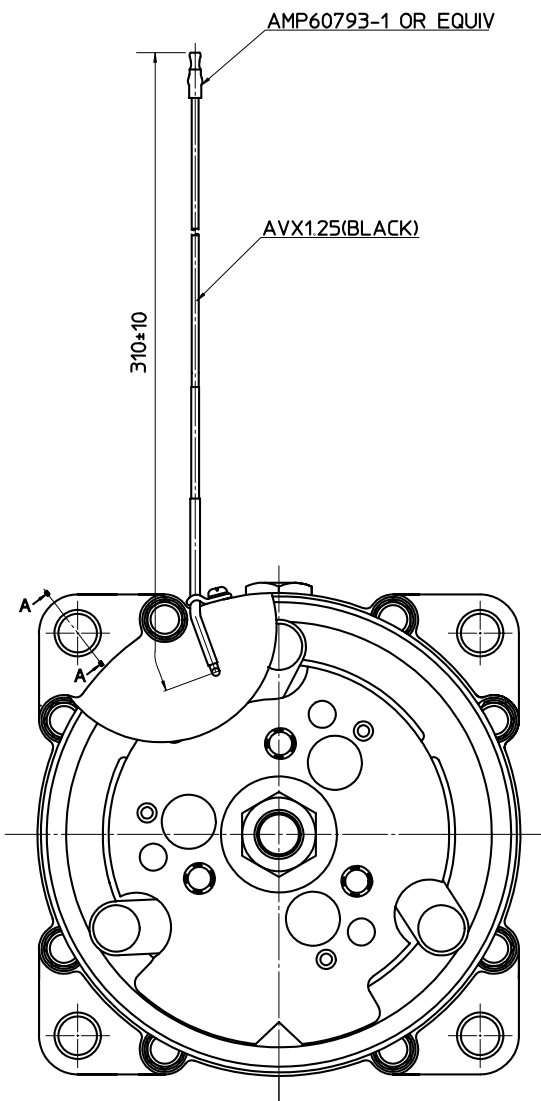
PARTIAL SECT B-B (2:1)



DETAIL OF ROTOR GROOVE(2:1)



PARTIAL SECT A-A



COMPRESSOR SPECIFICATIONS

BORE	Ø35 mm
STROKE	28.6 mm
DISPLACEMENT PER REVOLUTION	138 cc/rev
NUMBER OF CYLINDERS	5
MAXIMUM ALLOWABLE r.p.m.	7000 r.p.m.
MAXIMUM ALLOWABLE CONTINUOUS r.p.m.	6000 r.p.m.
REFRIGERANT	HFC134a
OIL (SP-20 OR EQUIV.)	210 cc
ROTATION (CLUTCH SIDE VIEW)	CLOCKWISE
WEIGHT	kg

CLUTCH SPECIFICATIONS

RATED VOLTAGE	DC 12 V
BREAKAWAY TORQUE	3.5 kg-m
MINIMUM ENGAGEMENT VOLTAGE	7.5 V max
POWER CONSUMPTION	50 W (AL)
MAXIMUM ALLOWABLE r.p.m.	7000 r.p.m.
MAXIMUM ALLOWABLE CONTINUOUS r.p.m.	6000 r.p.m.
BELT TYPE	PV
PULLEY DIAMETER	Ø119 mm
WEIGHT	kg

△				MATERIAL	PART NO.	NAME
△					6675	COMPRESSOR
△				THIRD ANGLE PROJECTION	SCALE	
△					1:1	
△				DESIGN BY	CHECKED BY	APPROVED BY
△				Raymond	Masa.T.	Masa.T.
						MODEL
						SD5H14M6675
						DRAWING NO.
						6675-6000S
No.				REVISION RECORD	BY	DATE