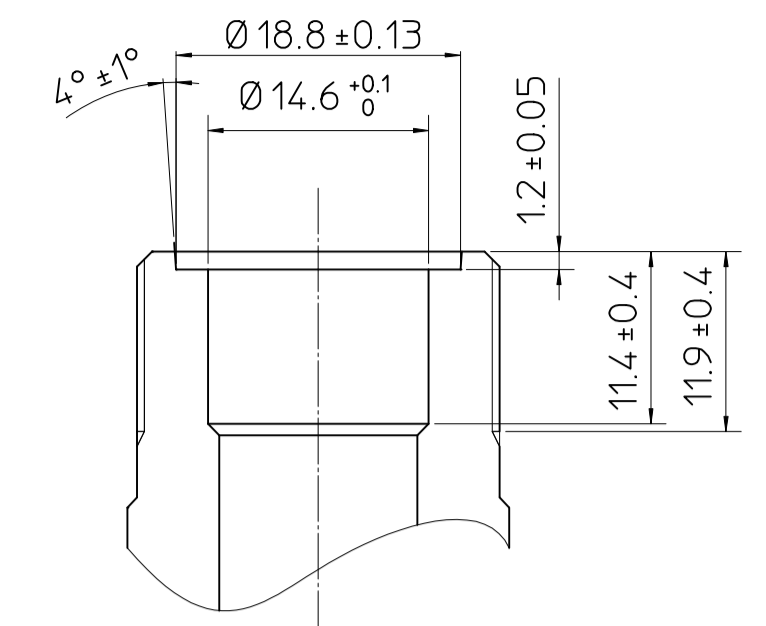
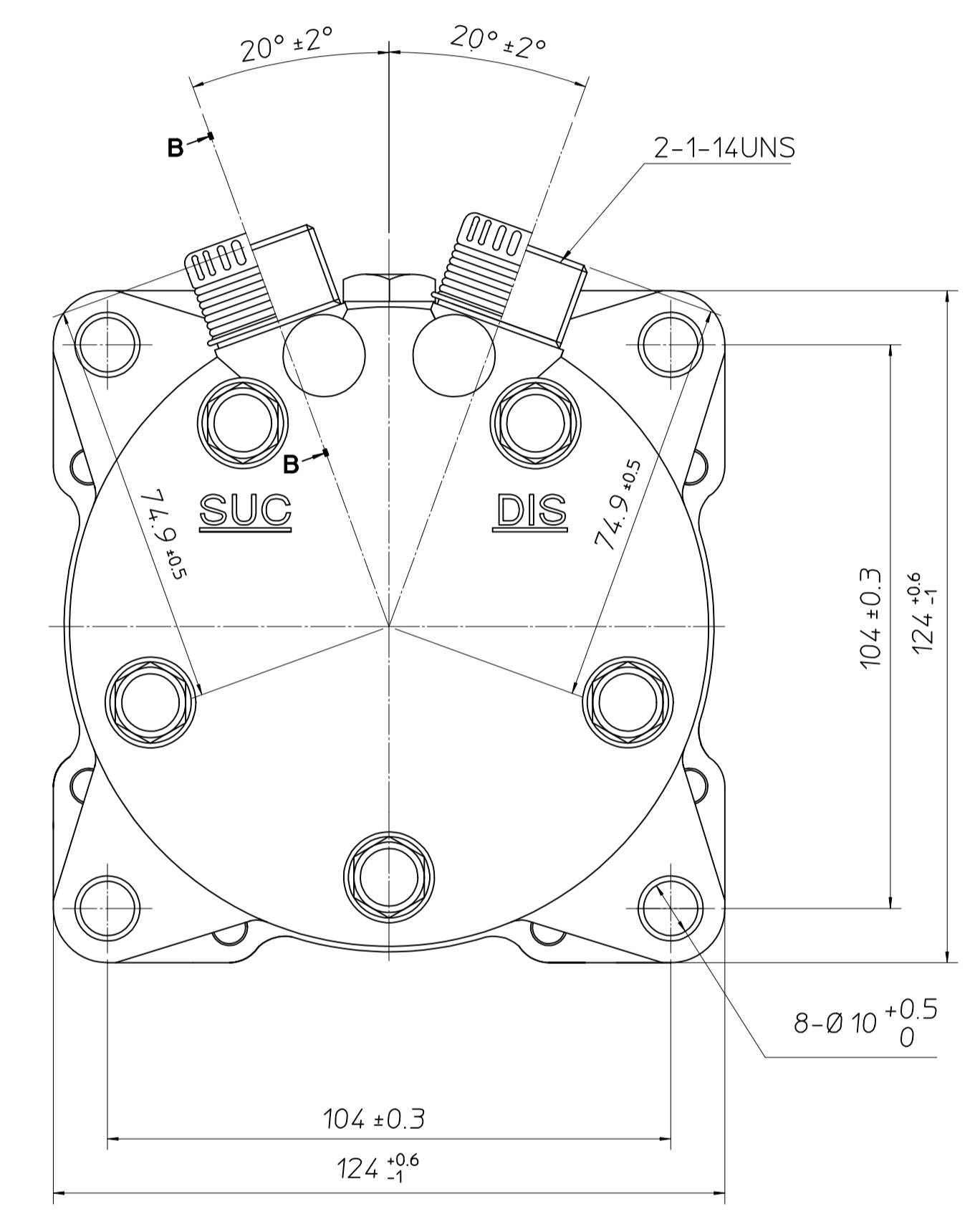
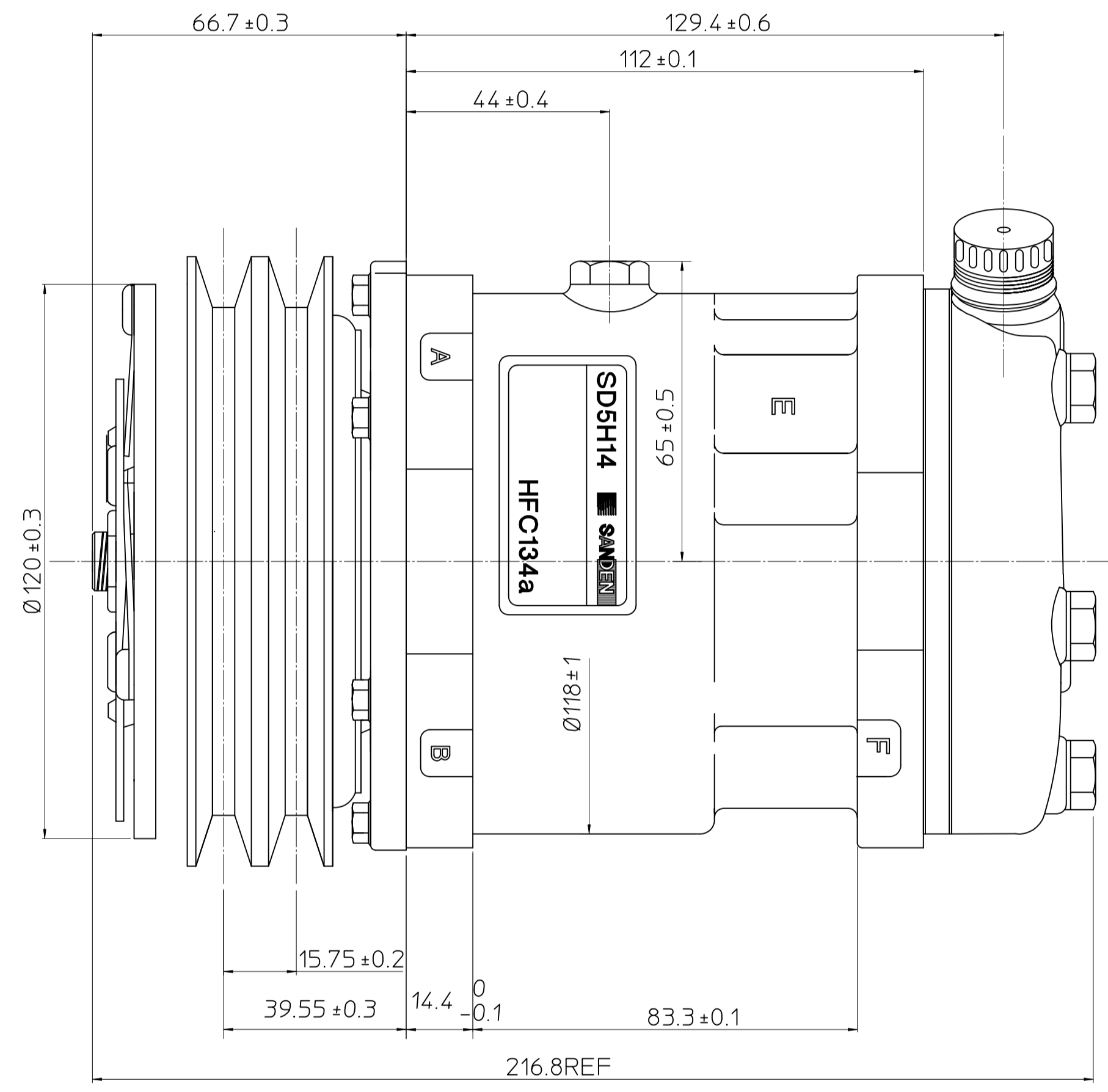


PARTIAL SECT A-A



PARTIAL SECT B-B (2:1)



**COMPRESSOR SPECIFICATIONS**

BORE	Ø35 mm
STROKE	28.6 mm
DISPLACEMENT PER REVOLUTION	138 cc/rev
NUMBER OF CYLINDERS	5
MAXIMUM ALLOWABLE r.p.m.	4000 r.p.m.
MAXIMUM ALLOWABLE CONTINUOUS r.p.m.	4000 r.p.m.
REFRIGERANT	HFC134a
OIL (SP-20 OR EQUIV.)	210 cc
ROTATION (CLUTCH SIDE VIEW)	CLOCKWISE
WEIGHT	kg

**CLUTCH SPECIFICATIONS**

RATED VOLTAGE	DC 12 V
BREAKAWAY TORQUE	3.5 kg-m
MINIMUM ENGAGEMENT VOLTAGE	7.5 V max
POWER CONSUMPTION	50 W (AL)
MAXIMUM ALLOWABLE r.p.m.	4000 r.p.m.
MAXIMUM ALLOWABLE CONTINUOUS r.p.m.	4000 r.p.m.
BELT TYPE	A2
PULLEY DIAMETER	Ø132mm
WEIGHT	kg

△ △ △ △ △	MATERIAL	PART NO.	NAME
		6677	COMPRESSOR
	THIRD ANGLE PROJECTION	SCALE	1:1
	DESIGN BY <i>Raymond</i>	DATE	22.12.00
	CHECKED BY	DATE	MODEL SD5H14C6677S
	APPROVED BY	DATE	DRAWING NO. 6677-6000S
No.	REVISION RECORD	BY	DATE