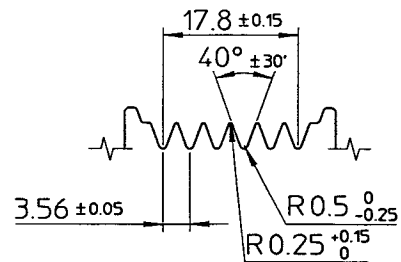
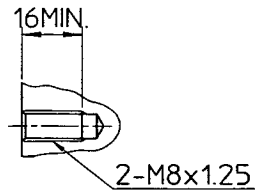


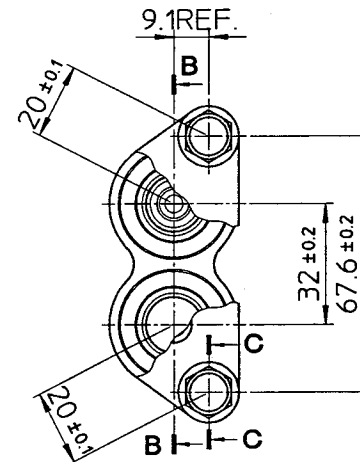
PARTIAL SECT. A-A



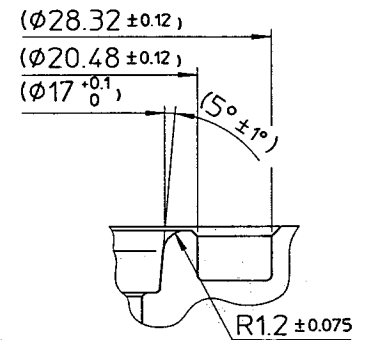
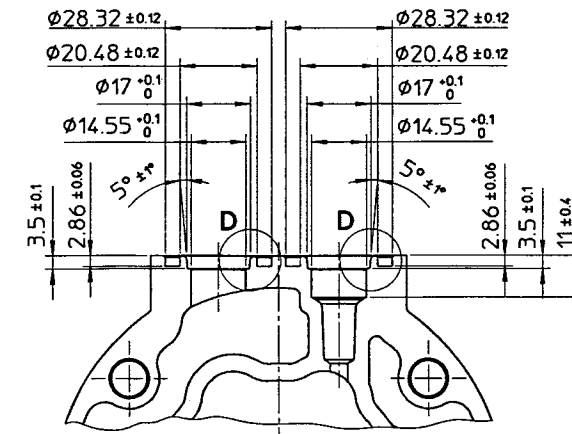
DETAIL OF ROTOR GROOVE(2:1)



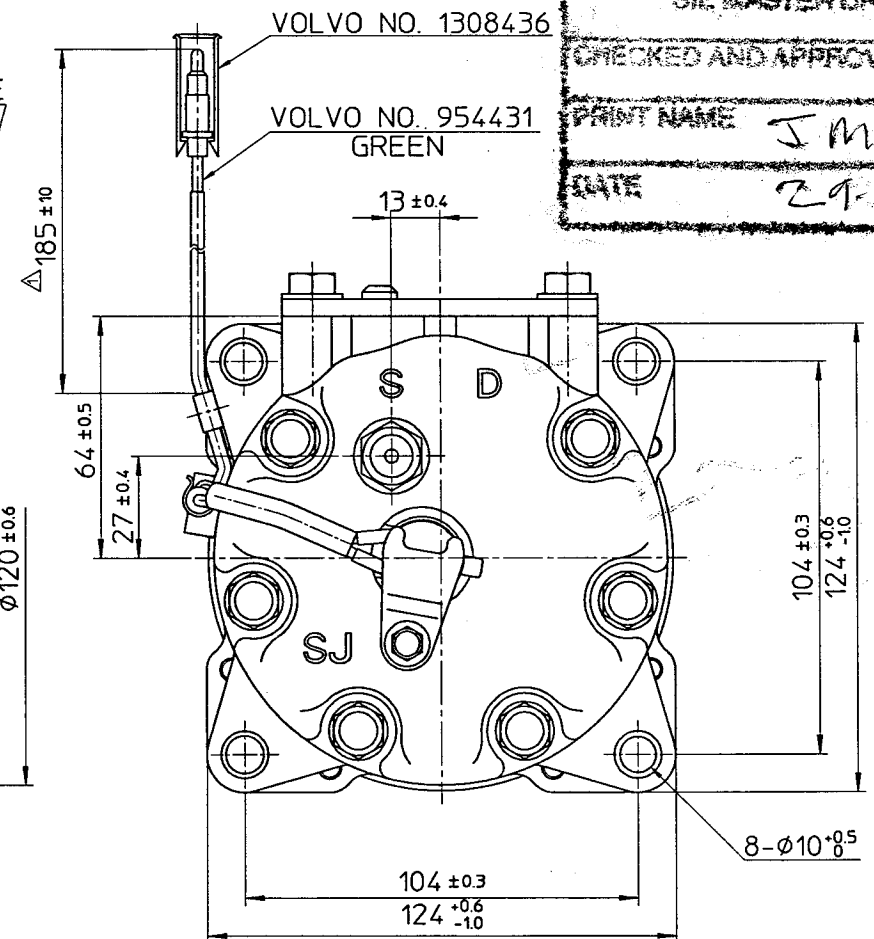
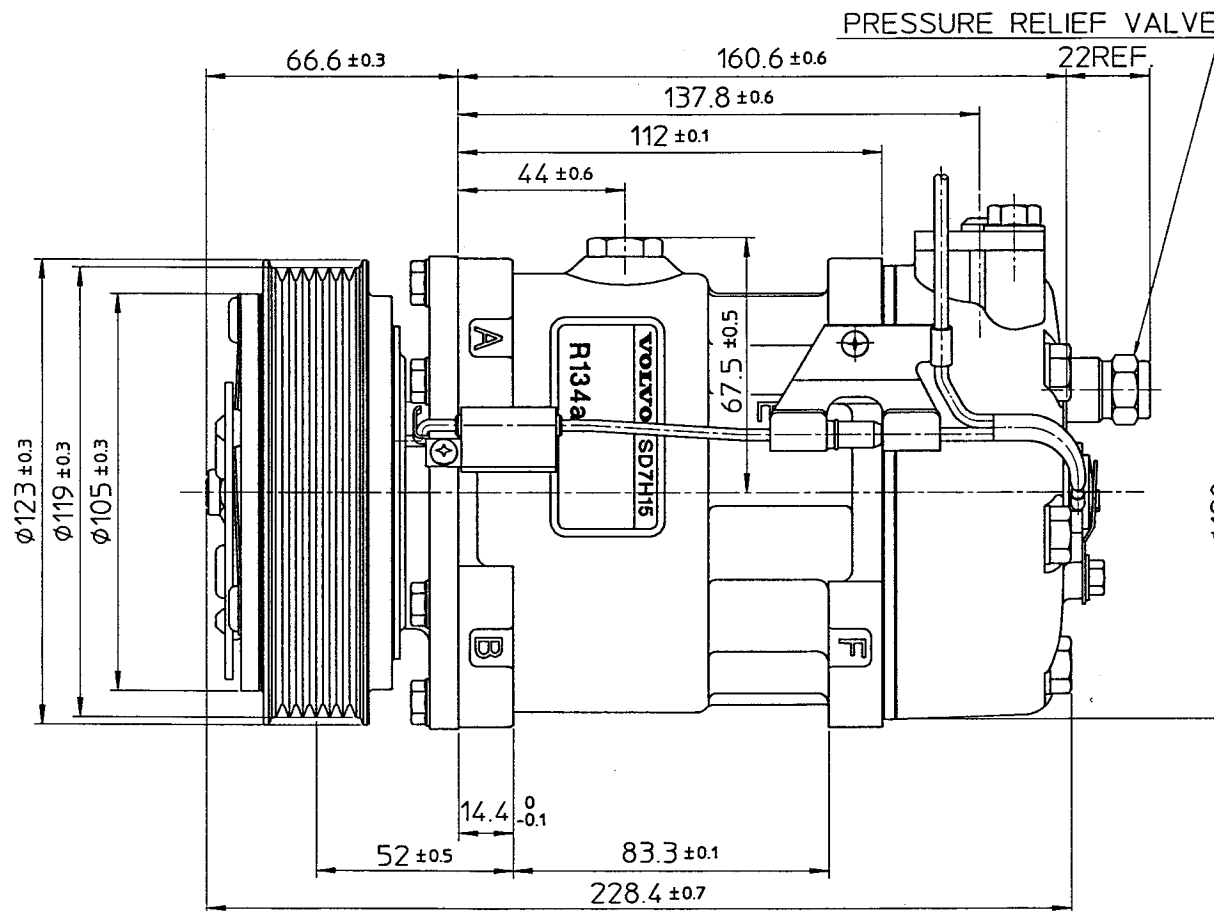
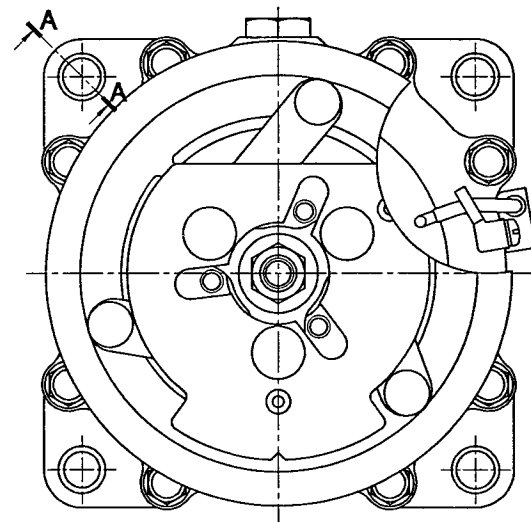
PARTIAL SECT. C-C



PARTIAL SECT. B-B



DETAIL OF D (5:1)



SIE MASTER DRAWING
 CHECKED AND APPROVED BY
 PRINT NAME J Mitchell
 DATE 29-4-99

COMPRESSOR SPECIFICATIONS

BORE	Ø29.3	mm (1.15 in.)
STROKE	32.8	mm (1.29 in.)
DISPLACEMENT PER REVOLUTION	154.9	cc/rev.(9.5 cu.in./rev.)
NUMBER OF CYLINDERS	7	
MAXIMUM ALLOWABLE r.p.m.	7000	r.p.m.
MAXIMUM ALLOWABLE CONTINUOUS r.p.m.	6000	r.p.m.
REFRIGERANT	R-134a	
OIL : SP-20 OR EQUIV.	240	cc (8.2 fl.oz.)
WEIGHT	5.0	kg (11.0 lb)

CLUTCH SPECIFICATIONS

RATED VOLTAGE	DC 12 V
BREAKAWAY TORQUE	3.5 kg-m (25.3 ft-lb)
MINIMUM ENGAGEMENT VOLTAGE	7.5 V MAX.
POWER CONSUMPTION	49 W (CU)
MAXIMUM ALLOWABLE r.p.m.	7000 r.p.m.
MAXIMUM ALLOWABLE CONTINUOUS r.p.m.	6000 r.p.m.
BELT TYPE	PV TYPE
PULLEY DIAMETER	Ø119 mm (4.7 in.)
WEIGHT	2.4 kg (5.3 lb)

THERMAL PROTECTOR SPECIFICATIONS

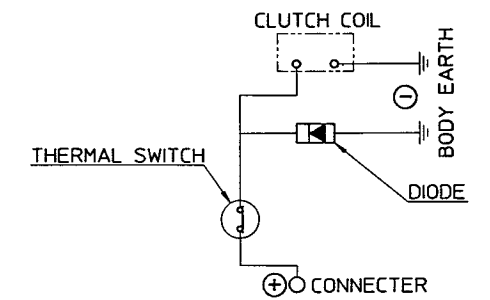
TYPE	BIMETAL
CUT OFF TEMPERATURE	115°C±3°C
DIFFERENTIAL	15°C REF.
CUT IN TEMPERATURE	100°C±6°C

BOLT SURFACE TREATMENT SPECIFICATION

Fe/Zn 5µ BLACK CROMATE

PRESSURE RELIEF VALVE SPECIFICATION

RELIEVED PRESSURE : 38±3bar



CIRCUIT DIAGRAM

UNCONTROLLED COPY

REVISION RECORD	MATERIAL	PART NO.	7846	NAME	COMPRESSOR
TH 27 AUG 93	THIRD ANGLE PROJECTION	SCALE	1:1	MODEL	SD7H15SJ7846
YU 11 JUN 92	DESIGN BY T. Hashimoto	DATE	27. AUG. 1993	DRAWING NO.	7846-6000
YU 11 JUN 92	CHECKED BY Y. Chiguchi	DATE	27. AUG. 1993		B
YU 11 JUN 92	CHECKED BY Y. Tsubaguchi	DATE	3. SEP. 1993		