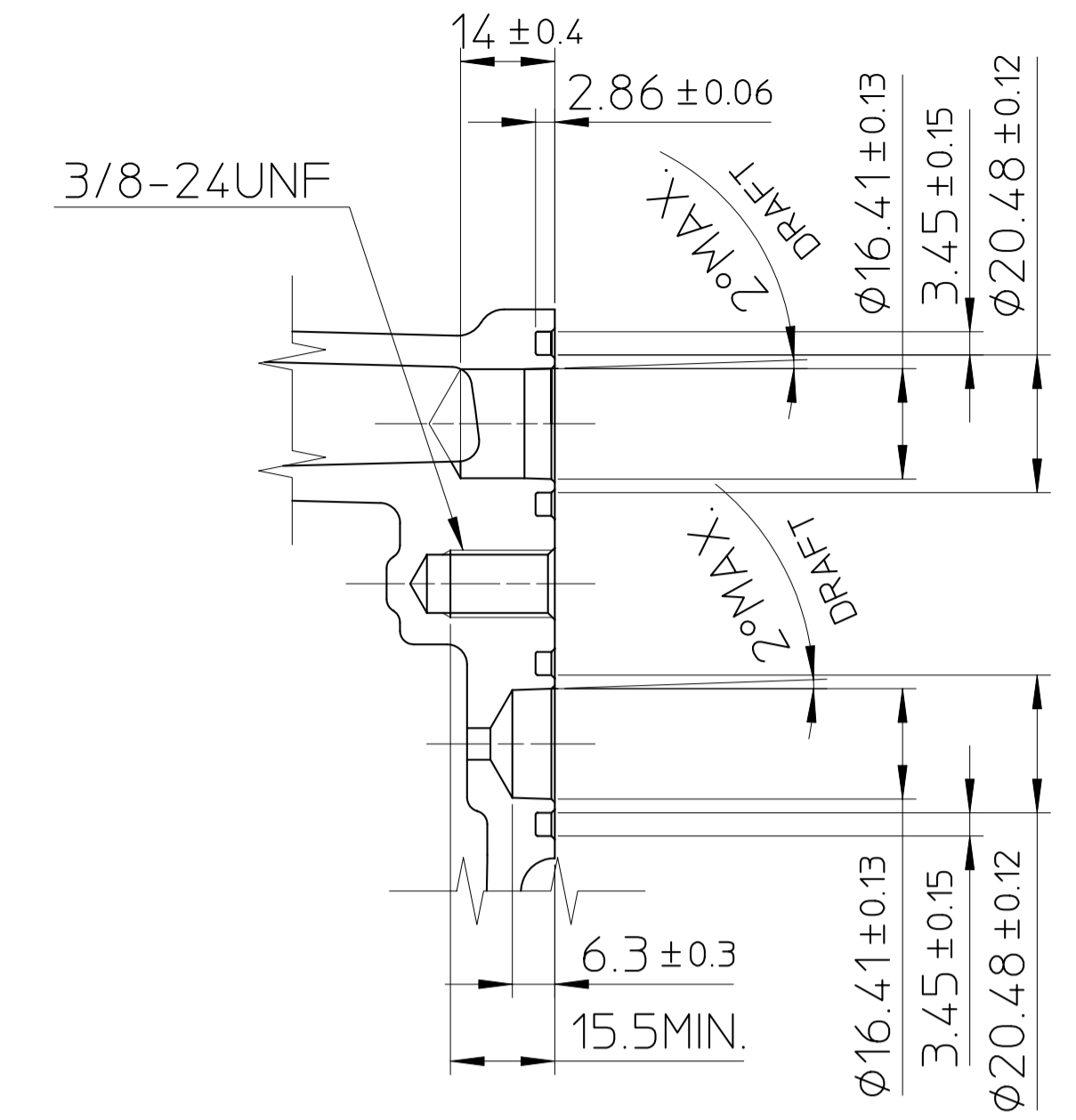
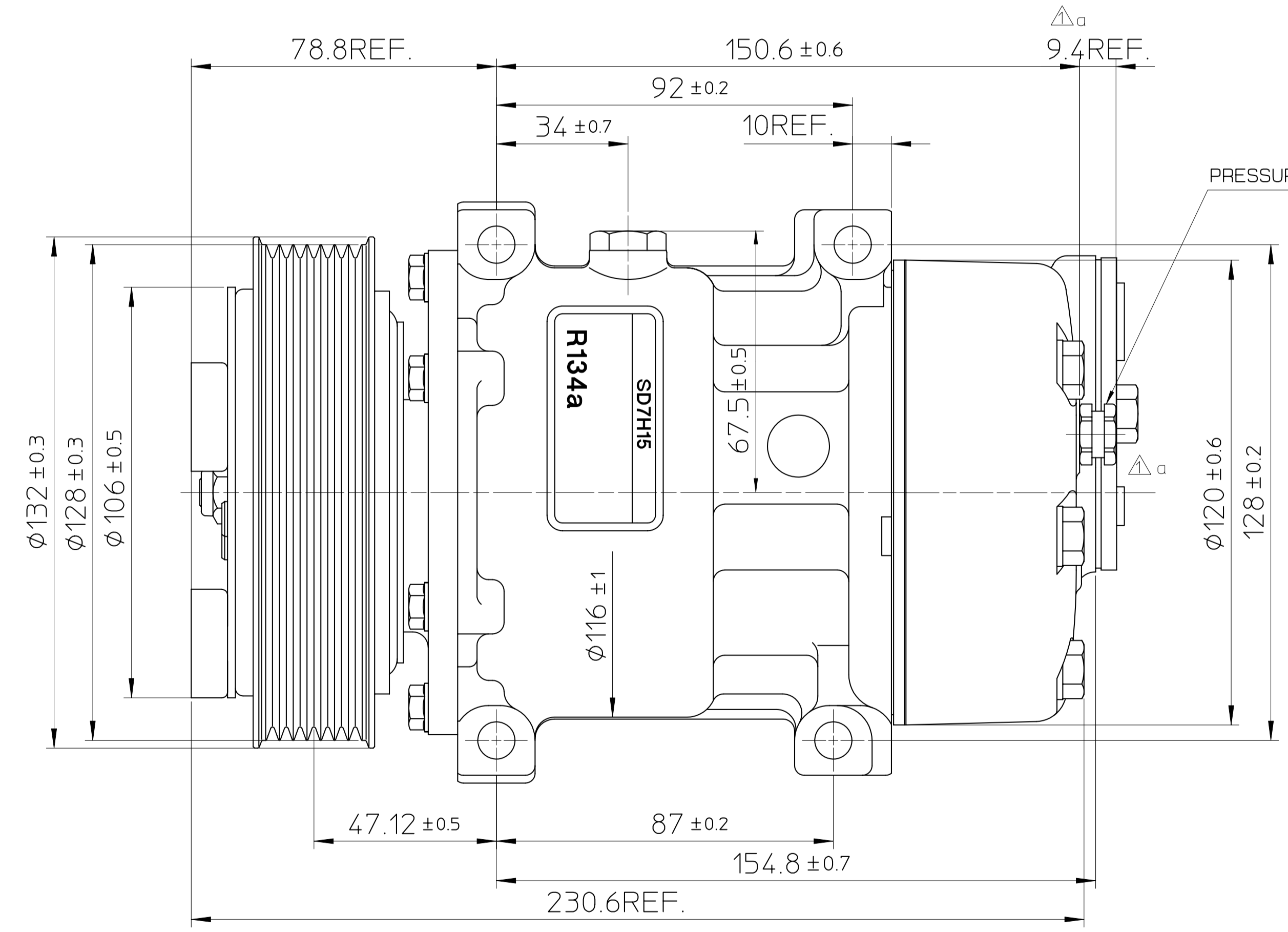


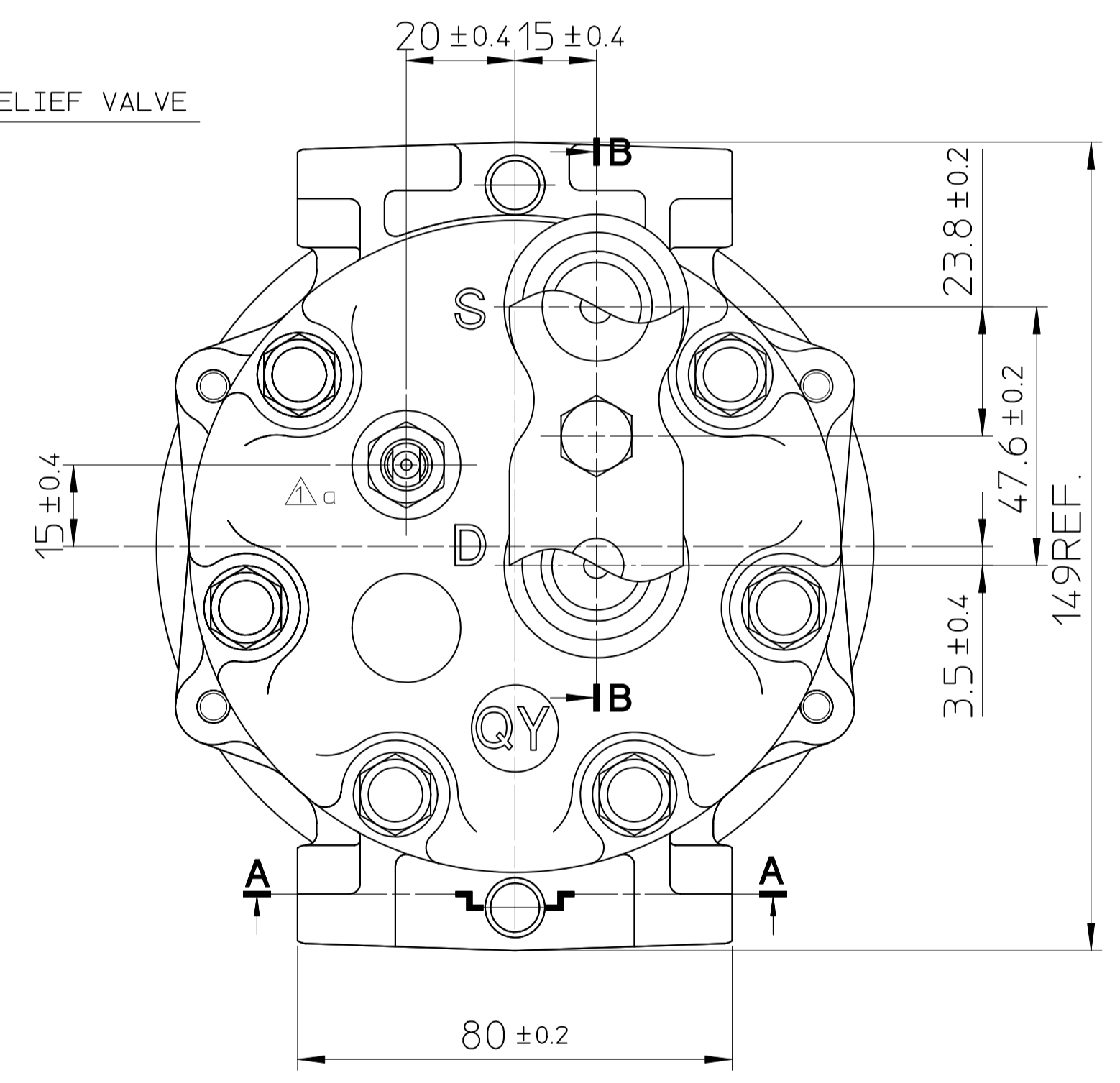
DETAIL OF ROTOR GROOVE (2:1)



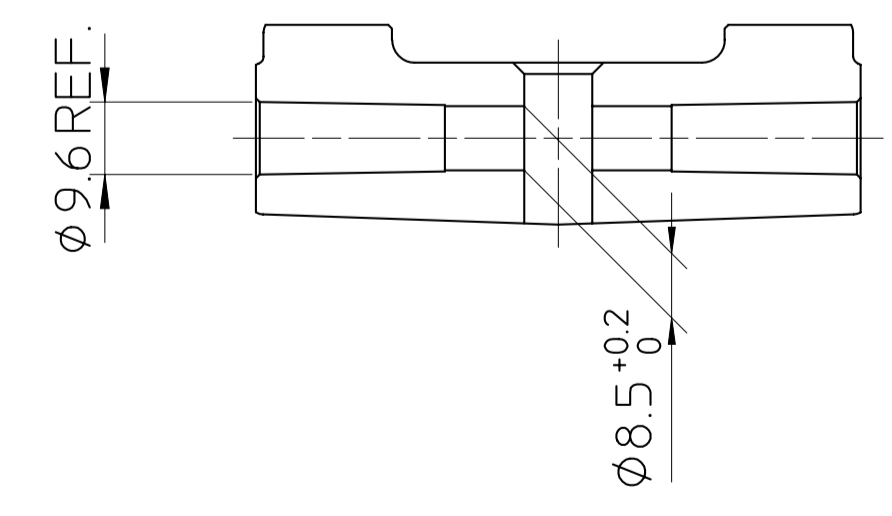
PARTIAL SECT. B-B



PRESSURE RELIEF VALVE



PARTIAL SECT. A-A



COMPRESSOR SPECIFICATIONS

BORE	Ø 29.3	mm (1.15 in.)
STROKE	32.8	mm (1.29 in.)
DISPLACEMENT PER REVOLUTION	154.9	cc/rev.(9.5 cu.in./rev.)
NUMBER OF CYLINDERS	7	
MAXIMUM ALLOWABLE r.p.m.	7000	r.p.m.
MAXIMUM ALLOWABLE CONTINUOUS r.p.m.	6000	r.p.m.
REFRIGERANT	R-134a	
OIL (SP-20)	135	cc (4.6 fl.oz.)
WEIGHT		kg (lb)

CLUTCH SPECIFICATIONS

RATED VOLTAGE	DC 12 V
BREAKAWAY TORQUE	3.5 kg-m (25.3 ft-lb)
MINIMUM ENGAGEMENT VOLTAGE	7.5 V MAX.
POWER CONSUMPTION	49 W (CU)
MAXIMUM ALLOWABLE r.p.m.	7000 r.p.m.
MAXIMUM ALLOWABLE CONTINUOUS r.p.m.	6000 r.p.m.
BELT TYPE	PV TYPE
PULLEY DIAMETER	Ø 128 mm (5.04 in.)
WEIGHT	kg (lb)

NOTE
COMPLIES WITH EU ELV DIRECTIVE 2000/53/EC.

MATERIAL	PART NO.	NAME	COMPRESSOR
THIRD ANGLE PROJECTION	SCALE 1 : 1	MODEL	SD7H15QY7895
DESIGNED BY H.Morohashi	DATE 04 . Apr 2006	DRAWING NO.	7895 - 6000
CHECKED BY K.Ishihara	DATE 04 . Apr 2006		
APPROVED BY S.Oofuchi	DATE 04 . Apr 2006		
NO.	REVISION RECORD	BY	DATE