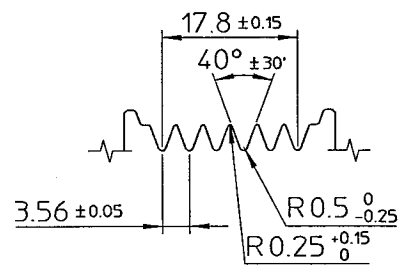
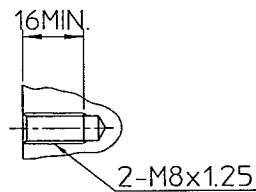


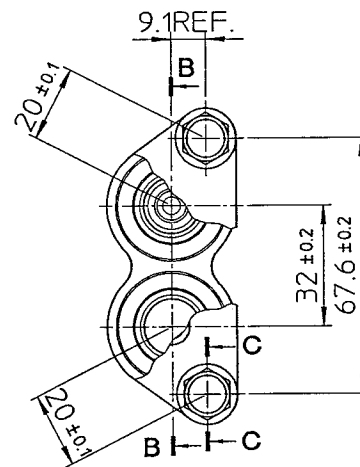
PARTIAL SECT. A-A



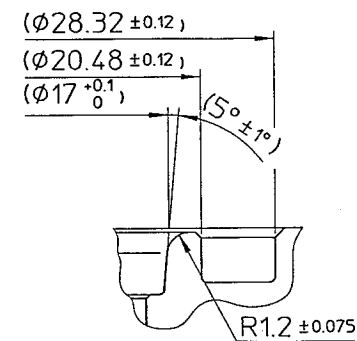
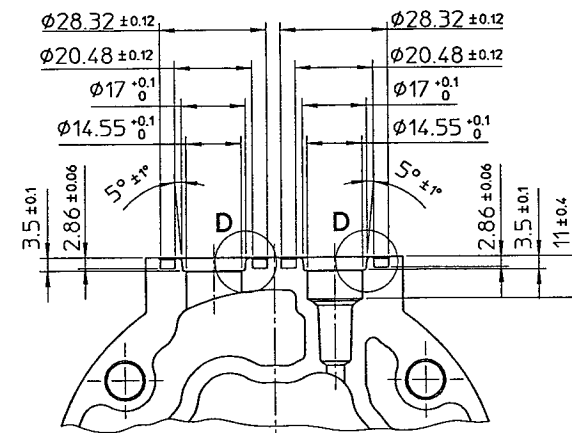
DETAIL OF ROTOR GROOVE(2:1)



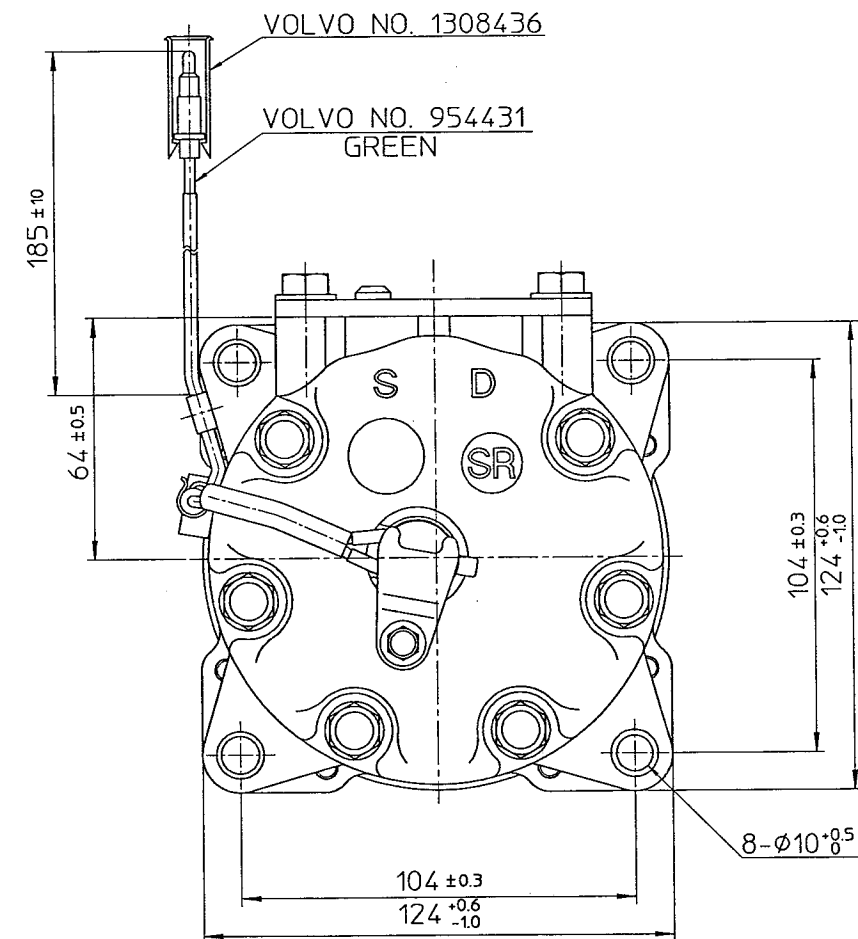
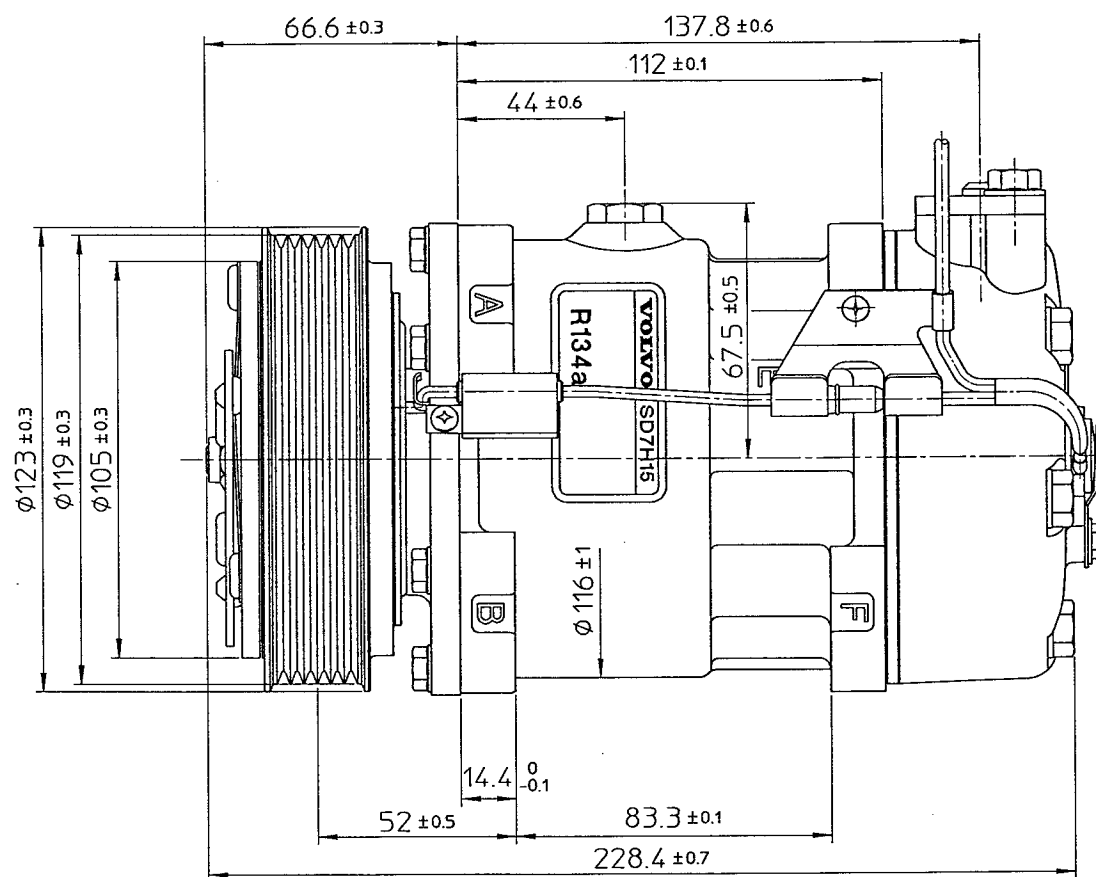
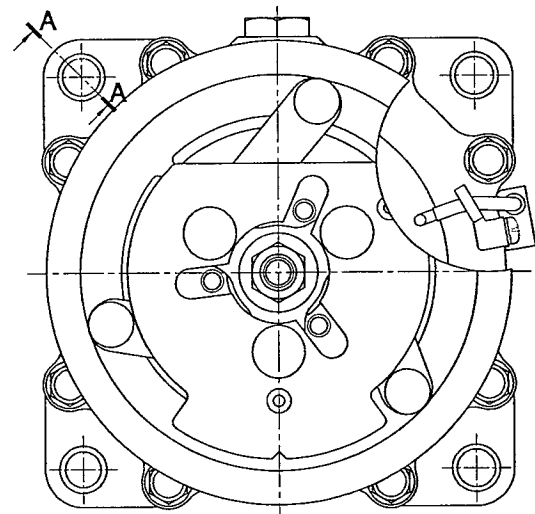
PARTIAL SECT. C-C



PARTIAL SECT. B-B



DETAIL OF D (5:1)



COMPRESSOR SPECIFICATIONS

|                                     |        |                           |
|-------------------------------------|--------|---------------------------|
| BORE                                | Ø29.3  | mm ( 1.15 in.)            |
| STROKE                              | 32.8   | mm ( 1.29 in.)            |
| DISPLACEMENT PER REVOLUTION         | 154.9  | cc/rev.( 9.5 cu.in./rev.) |
| NUMBER OF CYLINDERS                 | 7      |                           |
| MAXIMUM ALLOWABLE r.p.m.            | 7000   | r.p.m.                    |
| MAXIMUM ALLOWABLE CONTINUOUS r.p.m. | 6000   | r.p.m.                    |
| REFRIGERANT                         | R-134a |                           |
| OIL : SP-20 OR EQUIV.               | 240    | cc ( 8.2 fl.oz.)          |
| WEIGHT                              | 5.0    | kg ( 11.0 lb)             |

CLUTCH SPECIFICATIONS

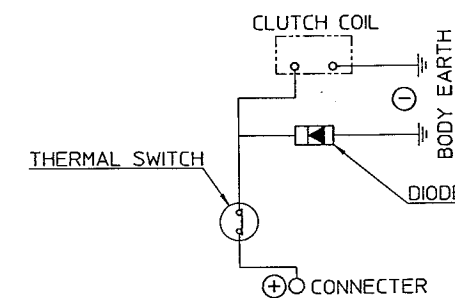
|                                     |                         |
|-------------------------------------|-------------------------|
| RATED VOLTAGE                       | DC 12 V                 |
| BREAKAWAY TORQUE                    | 3.5 kg-m ( 25.3 ft.-lb) |
| MINIMUM ENGAGEMENT VOLTAGE          | 7.5 V MAX.              |
| POWER CONSUMPTION                   | 49 W ( CU )             |
| MAXIMUM ALLOWABLE r.p.m.            | 7000 r.p.m.             |
| MAXIMUM ALLOWABLE CONTINUOUS r.p.m. | 6000 r.p.m.             |
| BELT TYPE                           | PV TYPE                 |
| PULLEY DIAMETER                     | Ø119 mm ( 4.7 in.)      |
| WEIGHT                              | 2.4 kg ( 5.3 lb)        |

THERMAL PROTECTOR SPECIFICATIONS

|                     |           |
|---------------------|-----------|
| TYPE                | BIMETAL   |
| CUT OFF TEMPERATURE | 115°C±3°C |
| DIFFERENTIAL        | 15°CREF.  |
| CUT IN TEMPERATURE  | 100°C±6°C |

BOLT SURFACE TREATMENT SPECIFICATION

Fe/Zn 5µ BLACK CROMATE

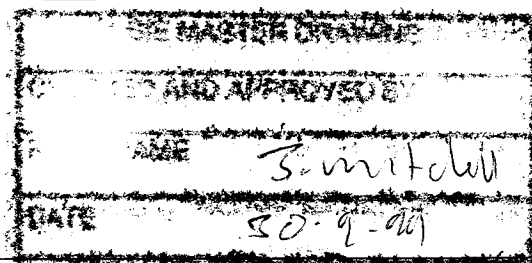


CIRCUIT DIAGRAM

NOTE

- 1.4 mm RECESS
- O-RING FOR FRONT HOUSING SEAL

UNCONTROLLED COPY



|     |                 |    |      |                        |          |             |             |              |
|-----|-----------------|----|------|------------------------|----------|-------------|-------------|--------------|
| △   |                 |    |      | MATERIAL               | PART NO. | 7930        | NAME        | COMPRESSOR   |
| △   |                 |    |      | THIRD ANGLE PROJECTION | SCALE    | 1:1         |             |              |
| △   |                 |    |      | DESIGN BY              | DATE     | 28.Sep.1993 | MODEL       | SD7H15SR7930 |
| △   |                 |    |      | CHECKED BY             | DATE     | 5.Oct.1993  | DRAWING NO. | 7930-6000    |
| △   |                 |    |      | CHECKED BY             | DATE     | 5.Oct.1993  |             |              |
| NO. | REVISION RECORD | BY | DATE |                        |          |             |             |              |