

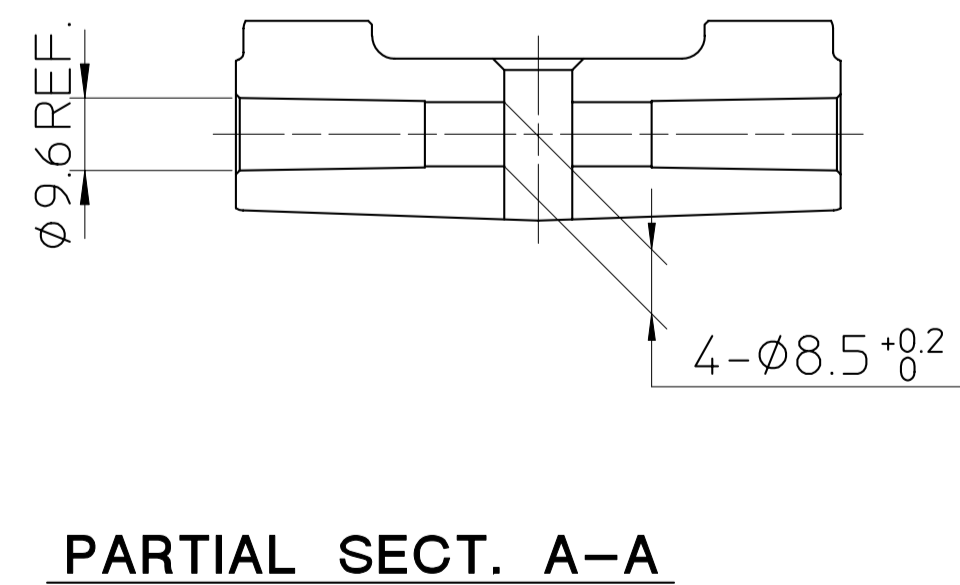
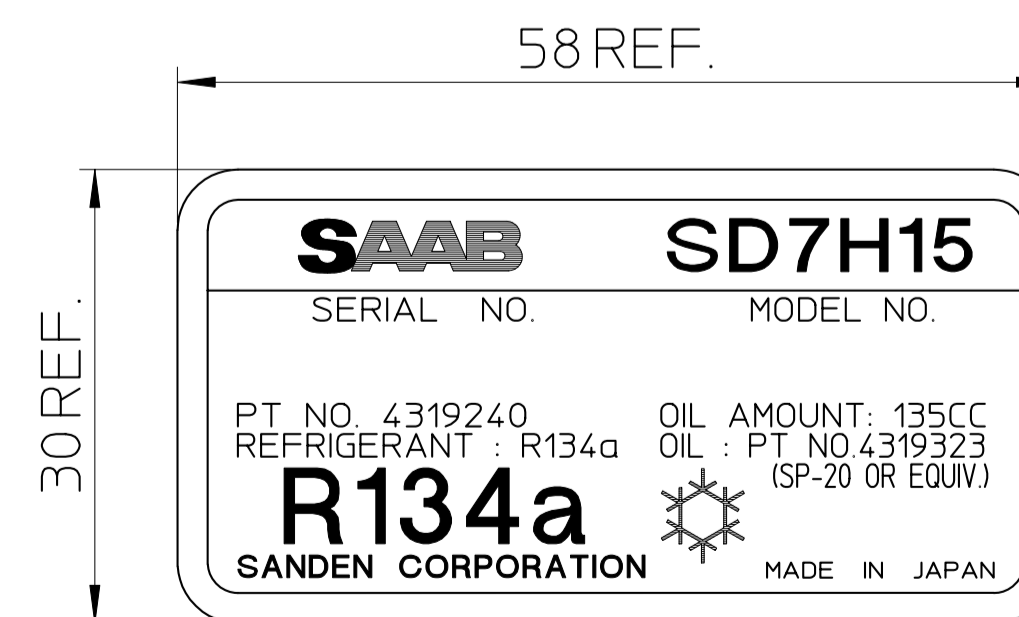
COMPRESSOR SPECIFICATIONS

| | |
|-------------------------------------|---------------------------------|
| BORE | Ø 29.3 mm (1.15 in.) |
| STROKE | 32.8 mm (1.29 in.) |
| DISPLACEMENT PER REVOLUTION | 154.9 cc/rev.(9.5 cu.in./rev.) |
| NUMBER OF CYLINDERS | 7 |
| MAXIMUM ALLOWABLE r.p.m. | 7000 r.p.m. |
| MAXIMUM ALLOWABLE CONTINUOUS r.p.m. | 6000 r.p.m. |
| REFRIGERANT | R134a |
| OIL (SP-20 OR EQUIV.) | 135 cc (4.6 fl.oz.) |
| WEIGHT | kg (lb) |

CLUTCH SPECIFICATIONS

| | |
|-------------------------------------|-----------------------|
| RATED VOLTAGE | DC 12 V |
| BREAKAWAY TORQUE | 35 kg-m (25.3 ft-lb) |
| MINIMUM ENGAGEMENT VOLTAGE | 7.5 V MAX. |
| POWER CONSUMPTION | 48 W (CU) |
| MAXIMUM ALLOWABLE r.p.m. | 7000 r.p.m. |
| MAXIMUM ALLOWABLE CONTINUOUS r.p.m. | 6000 r.p.m. |
| BELT TYPE | PV TYPE |
| PULLEY DIAMETER | Ø133.6 mm (5.26 in.) |
| WEIGHT | kg (lb) |

NAME LABEL (2:1)



NOTE
COMPLIES WITH EU ELV DIRECTIVE 2000/53/EC.

| | | | |
|------------------------|-----------------|-------------|--------------|
| MATERIAL | PART NO. | NAME | COMPRESSOR |
| THIRD ANGLE PROJECTION | SCALE 1 : 1 | MODEL | SD7H15SE7943 |
| DESIGNED BY | DATE | DRAWING NO. | 7943 - 6000 |
| CHECKED BY | DATE | | B |
| APPROVED BY | DATE | | |
| NO. | REVISION RECORD | BY | DATE |