

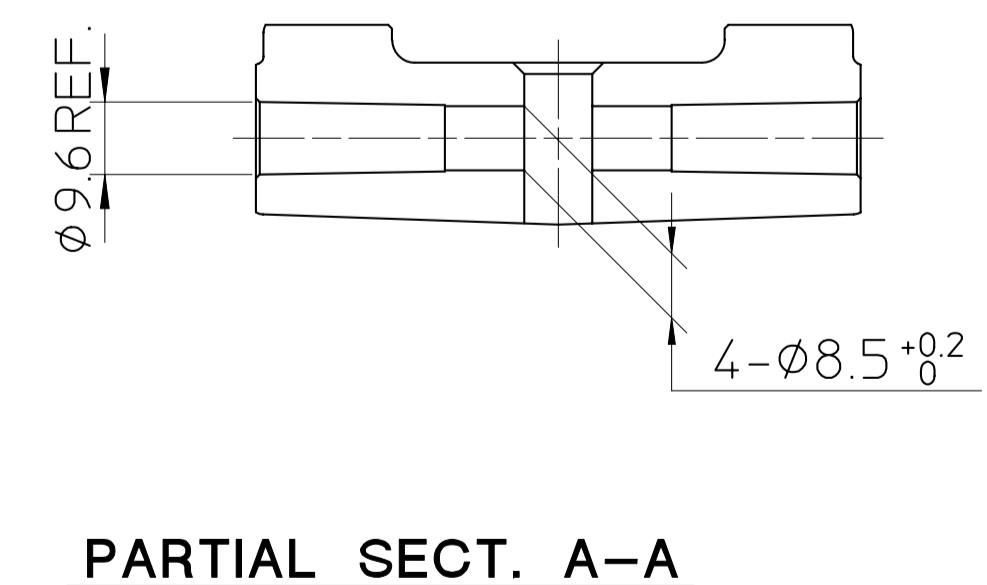
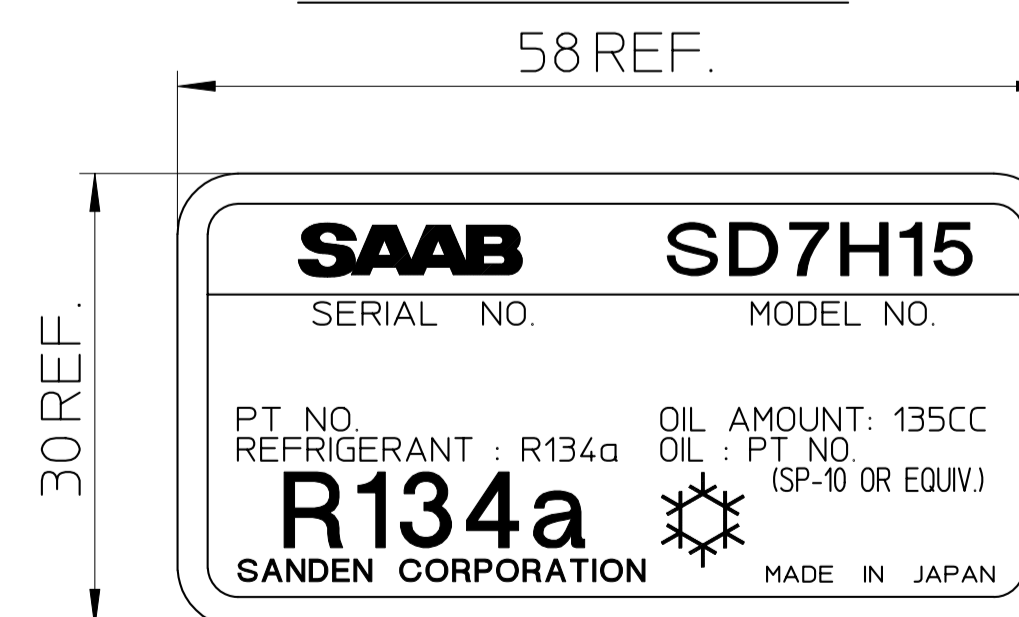
**COMPRESSOR SPECIFICATIONS**

BORE	φ 29.3	mm
STROKE	32.8	mm
DISPLACEMENT PER REVOLUTION	154.9	cc/rev.
ROTATION	CLOCKWISE	
NUMBER OF CYLINDERS	7	
MAXIMUM ALLOWABLE r.p.m.	7000	r.p.m.
MAXIMUM ALLOWABLE CONTINUOUS r.p.m.	6000	r.p.m.
REFRIGERANT	R134a	
OIL : SP-10 OR EQUIV.	135	cc
WEIGHT		kg

**CLUTCH SPECIFICATIONS**

RATED VOLTAGE	DC 12	V
BREAKAWAY TORQUE	34.3	N·m
MINIMUM ENGAGEMENT VOLTAGE	7.5	V MAX.
POWER CONSUMPTION	43	W ( CU )
MAXIMUM ALLOWABLE r.p.m.	7000	r.p.m.
MAXIMUM ALLOWABLE CONTINUOUS r.p.m.	6000	r.p.m.
BELT TYPE	PV	TYPE
PULLEY DIAMETER	φ133.6	mm
WEIGHT		kg

**NAME LABEL (2:1)**



**NOTE**  
COMPLIES WITH EU ELV DIRECTIVE 2000/53/EC.

△	MATERIAL	...	PART NO.	NAME	COMPRESSOR
△	THIRD ANGLE PROJECTION	...	SCALE	1 : 1	
△	DESIGNED BY	Y.AOYAMA	DATE		MODEL
△	HPRV CHANGE AND ADD NOTE.	morio 22 Dec '06	CHECKED BY		SD7H15SY8052
	INITIAL ISSUE	Y.A 19 Nov '96	APPROVED BY		DRAWING NO.
	REVISION RECORD	BY DATE			8052 - 6000
					A