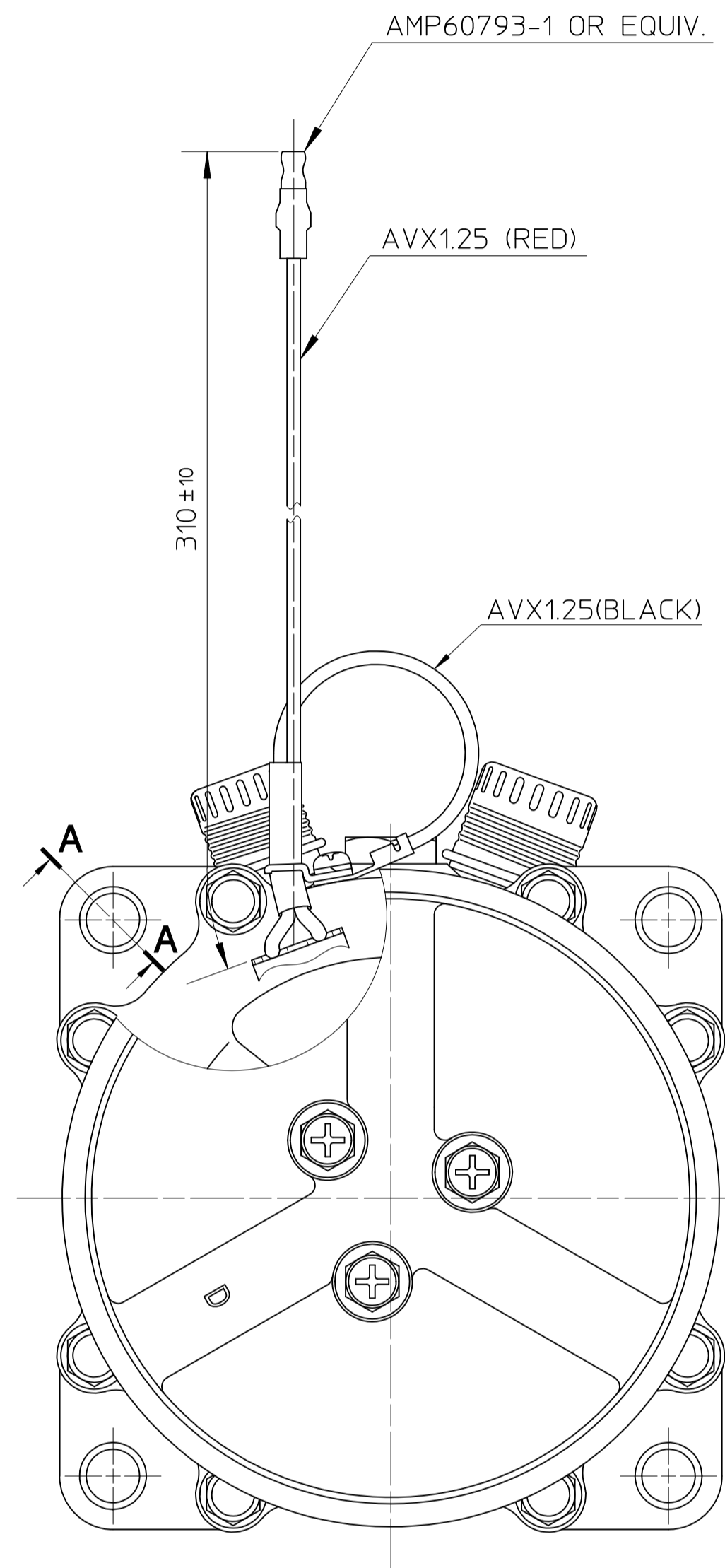
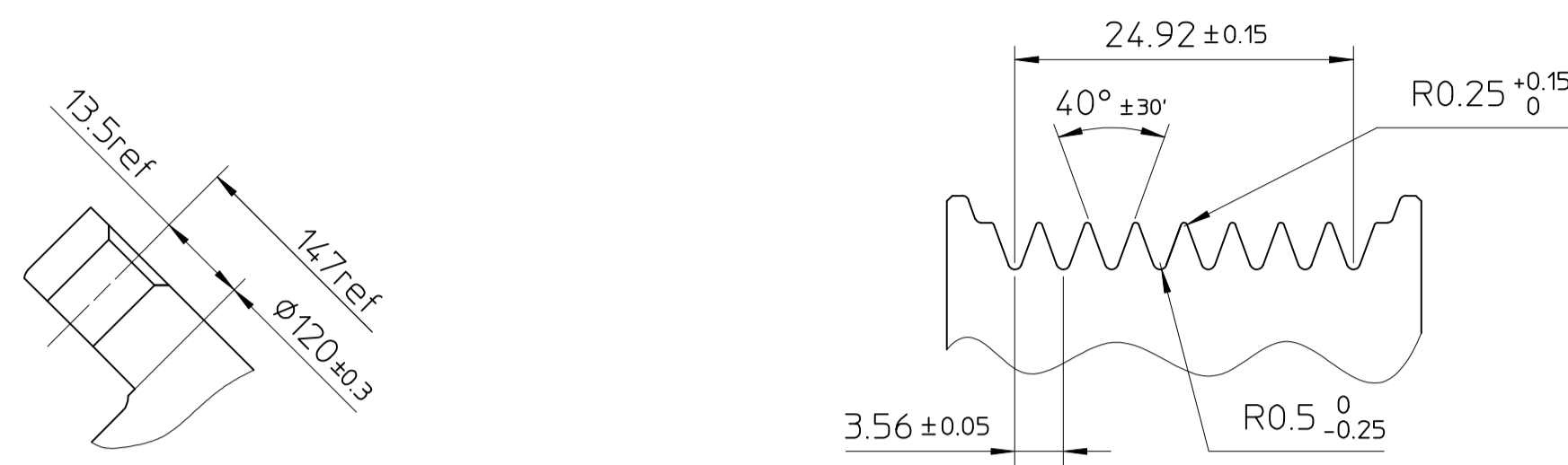


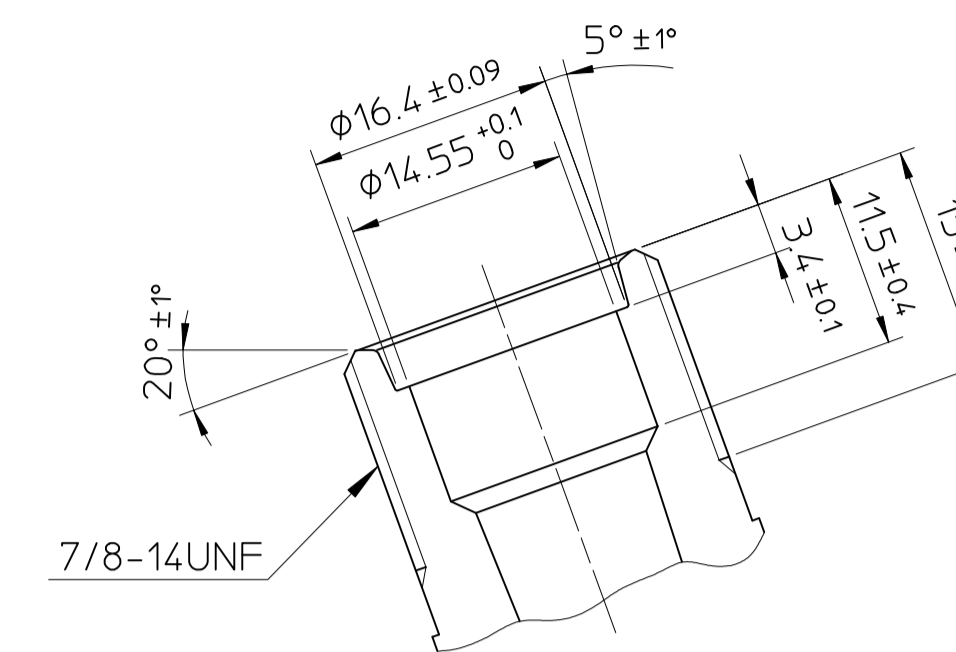
PARTIAL SECT. A-A



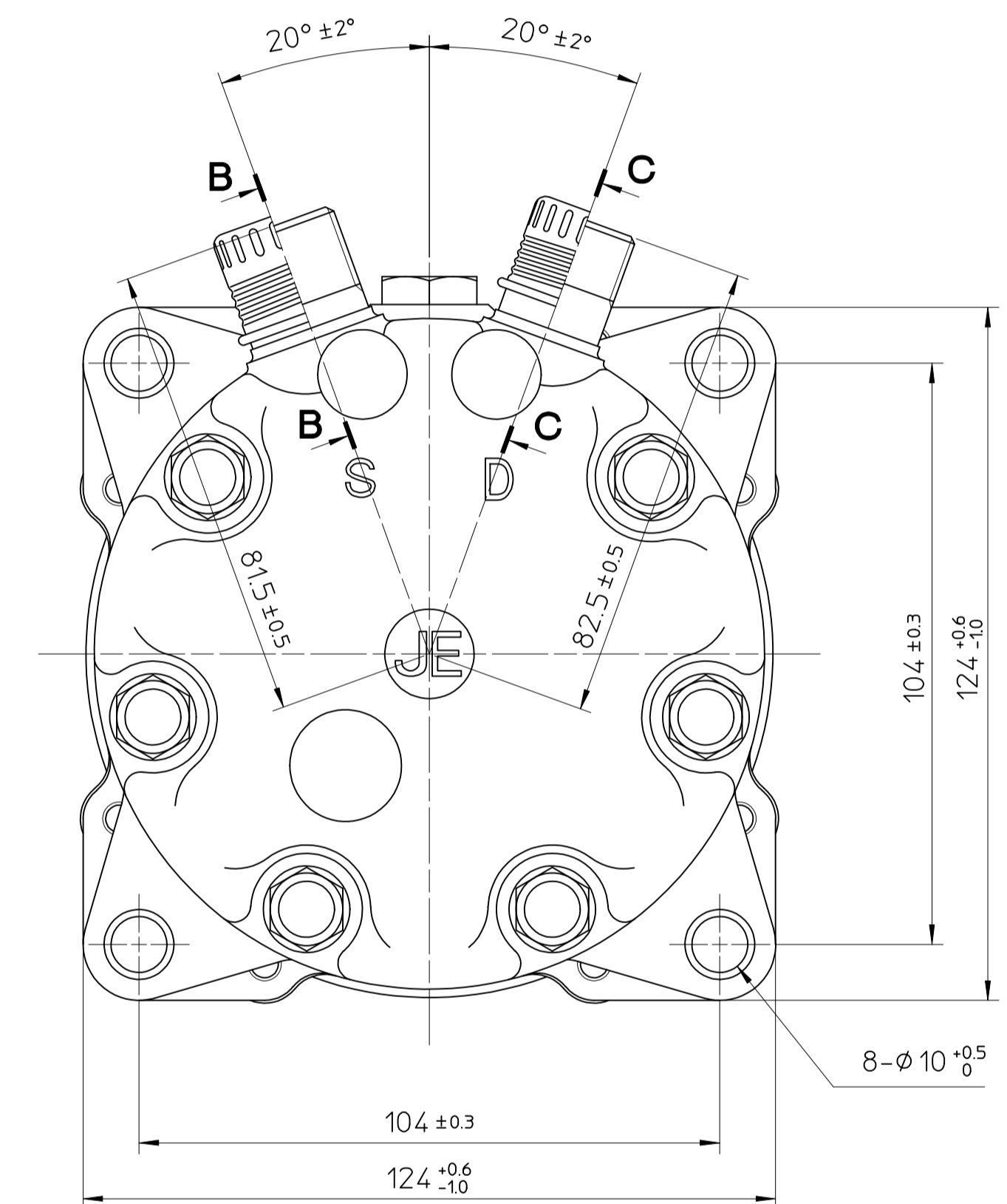
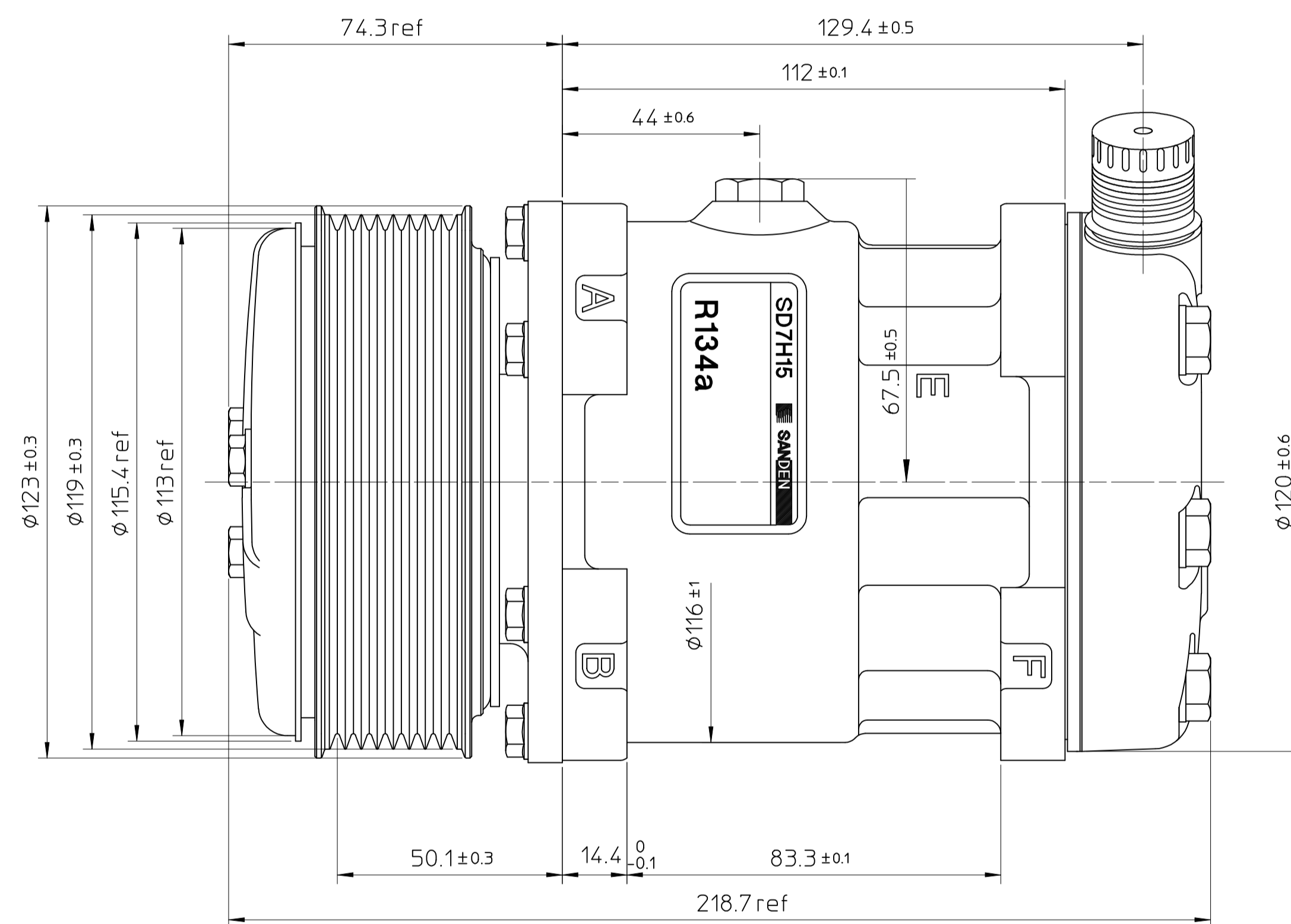
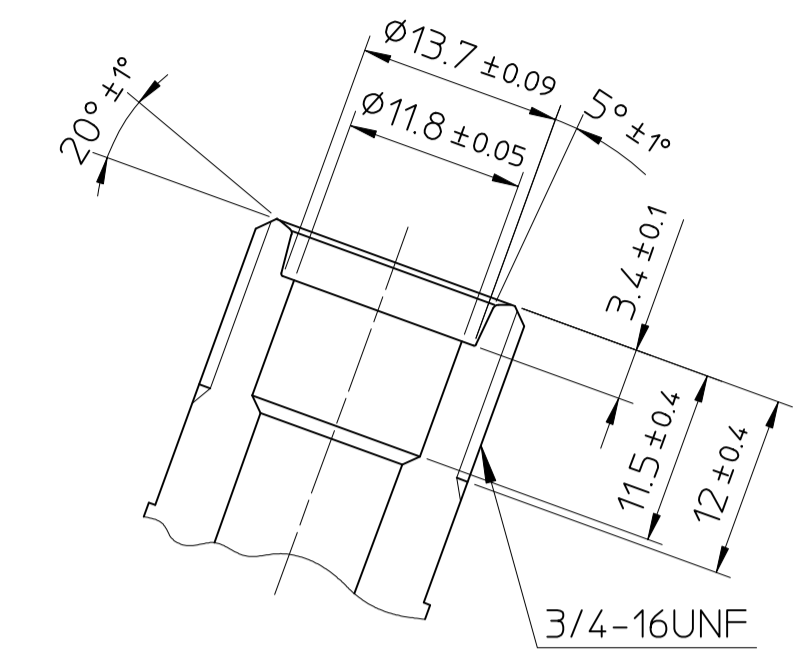
DETAIL OF ROTOR GROOVE (2:1)



PARTIAL SECT. B-B (2:1)



PARTIAL SECT. C-C (2:1)



COMPRESSOR SPECIFICATIONS

BORE	φ29.3 mm
STROKE	32.8 mm
NUMBER OF CYLINDERS	7
DISPLACEMENT PER REVOLUTION	154.9 cc/rev.
MAXIMUM ALLOWABLE CONTINUOUS SPEED	5000 r.p.m.
MAXIMUM DOWNSHIFT SPEED	5000 r.p.m.
REFRIGERANT	R-134a
OIL	SP-10 OR EQUIVALENT
OIL CHARGE	200 cc
ROTATION (CLUTCH SIDE VIEW)	CLOCKWISE
WEIGHT	kg

CLUTCH SPECIFICATIONS

RATED VOLTAGE	DC 12 V
MINIMUM BREAKAWAY TORQUE	3.5 kg · m
MINIMUM ENGAGEMENT VOLTAGE	DC 7.5 V
MAXIMUM POWER CONSUMPTION	43 W
MAXIMUM ALLOWABLE CONTINUOUS SPEED	5000 r.p.m.
MAXIMUM DOWNSHIFT SPEED	5000 r.p.m.
BELT TYPE	PV TYPE
PULLEY DIAMETER	φ119 mm
WEIGHT	kg

NO.	REVISION RECORD	BY	DATE	MATERIAL	PART NO.	NAME	COMPRESSOR
				THIRD ANGLE PROJECTION	SCALE 1:1		
				DESIGNED BY HAKUZAWA	DATE 1 . SEP. 1999	MODEL	SD7H15JE8100
				CHECKED BY Y.MATSUSHIMA	DATE 1 . SEP. 1999	DRAWING NO.	8100 - 6000
				APPROVED BY H.CHIYODA	DATE 1 . SEP. 1999		