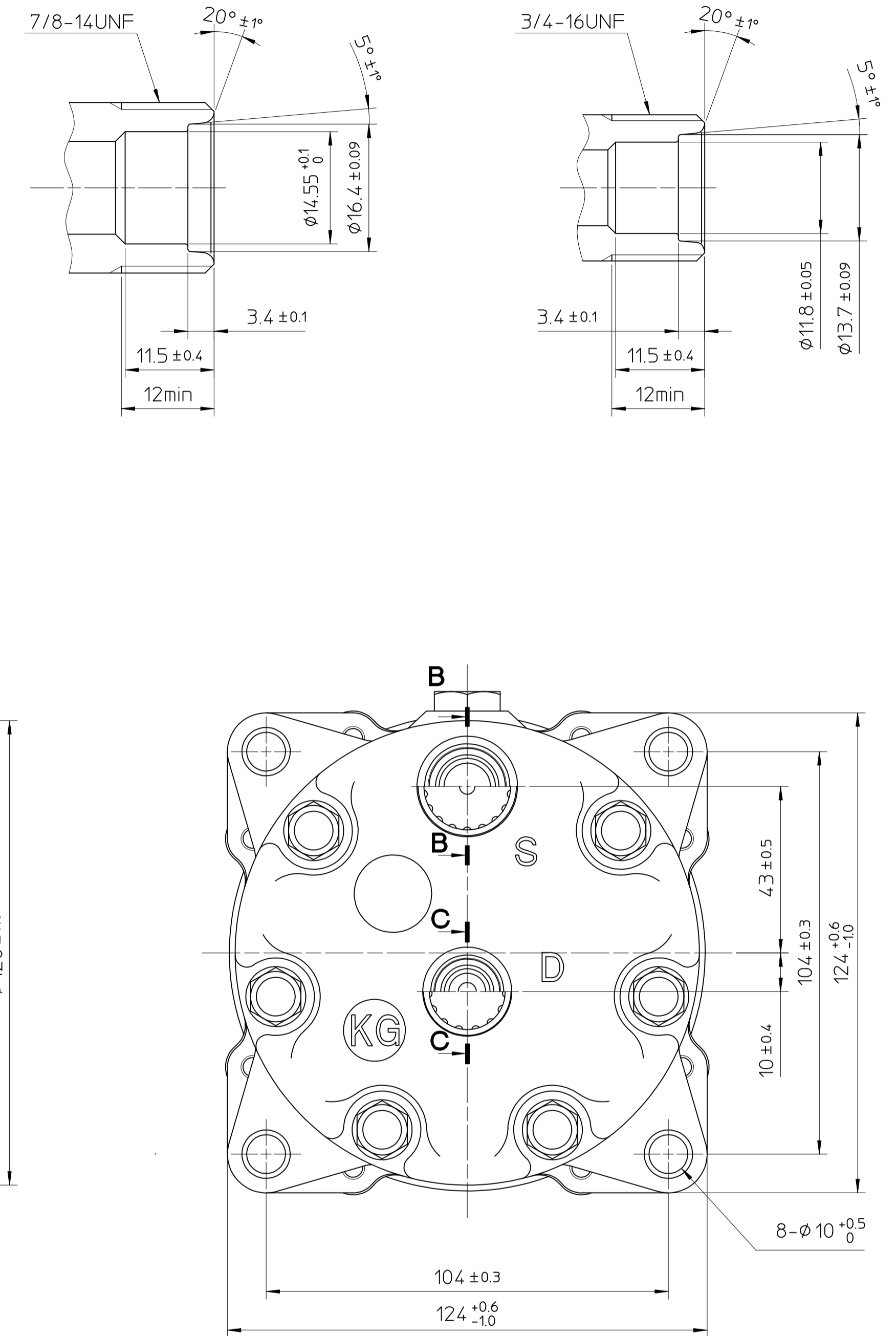
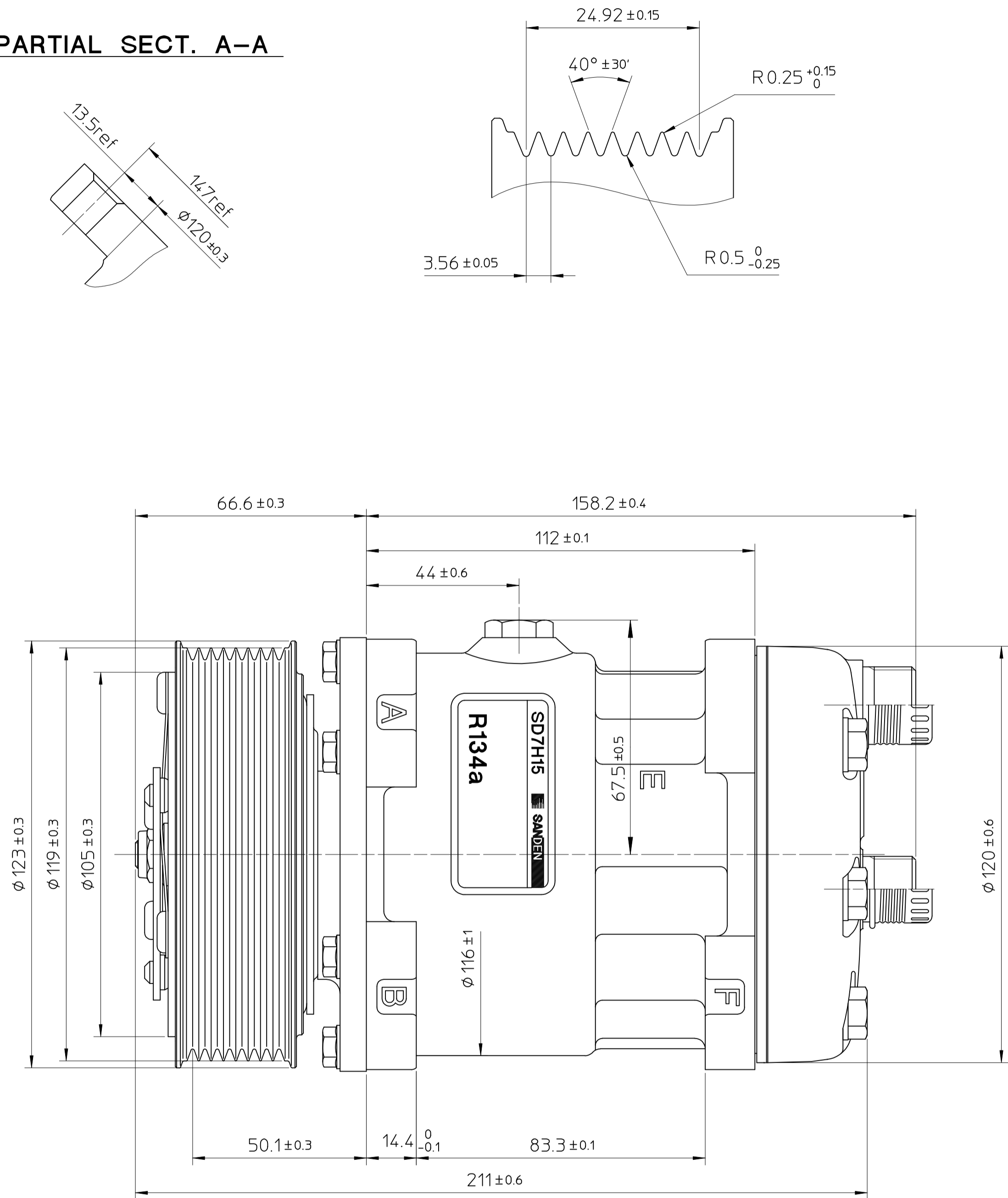
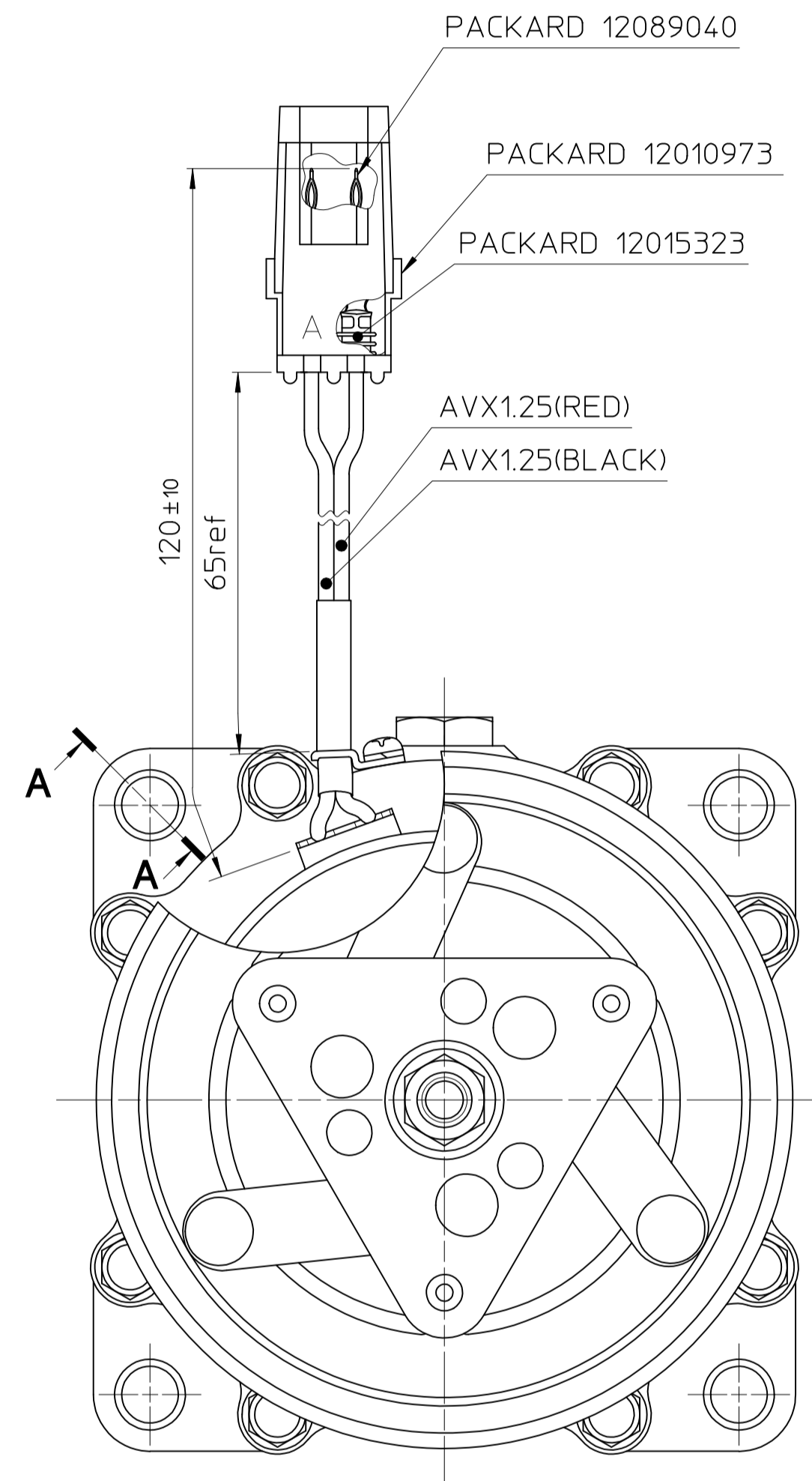


DETAIL OF ROTOR GROOVE (2:1)

PARTIAL SECT. B-B (2:1)

PARTIAL SECT. C-C (2:1)

PARTIAL SECT. A-A



COMPRESSOR SPECIFICATIONS

BORE	∅29.3 mm
STROKE	32.8 mm
NUMBER OF CYLINDERS	7
DISPLACEMENT PER REVOLUTION	154.9 cm <sup>3</sup> /rev.
MAXIMUM ALLOWABLE CONTINUOUS SPEED	6000 r.p.m.
MAXIMUM DOWNSHIFT SPEED	7000 r.p.m.
REFRIGERANT	R134a
OIL	SP-10 OR EQUIVALENT
OIL CHARGE	135 cm <sup>3</sup>
ROTATION (CLUTCH SIDE VIEW)	CLOCKWISE
WEIGHT	kg

CLUTCH SPECIFICATIONS

RATED VOLTAGE	DC 12 V
MINIMUM BREAKAWAY TORQUE	34.3 N·m
MINIMUM ENGAGEMENT VOLTAGE	DC 7.5 V
MAXIMUM POWER CONSUMPTION	43 W
MAXIMUM ALLOWABLE CONTINUOUS SPEED	6000 r.p.m.
MAXIMUM DOWNSHIFT SPEED	7000 r.p.m.
BELT TYPE	PV TYPE
PULLEY DIAMETER	∅119 mm
WEIGHT	kg

NO.	REVISION RECORD	BY	DATE	MATERIAL	PART NO.	NAME	COMPRESSOR
				THIRD ANGLE PROJECTION	SCALE 1 : 1		
				DESIGNED BY H.KUZAWA	DATE 07 Feb 2002	MODEL	SD7H15KG8143
				CHECKED BY H.KANOU	DATE 07 Feb 2002	DRAWING NO.	8143 - 6000
				APPROVED BY H.AZAMI	DATE 07 Feb 2002		