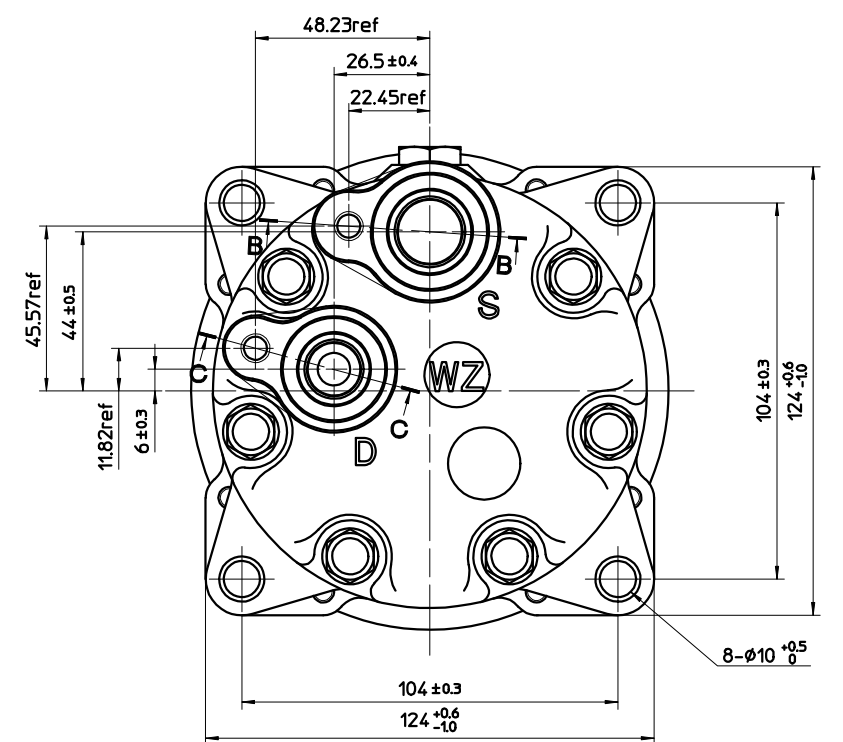
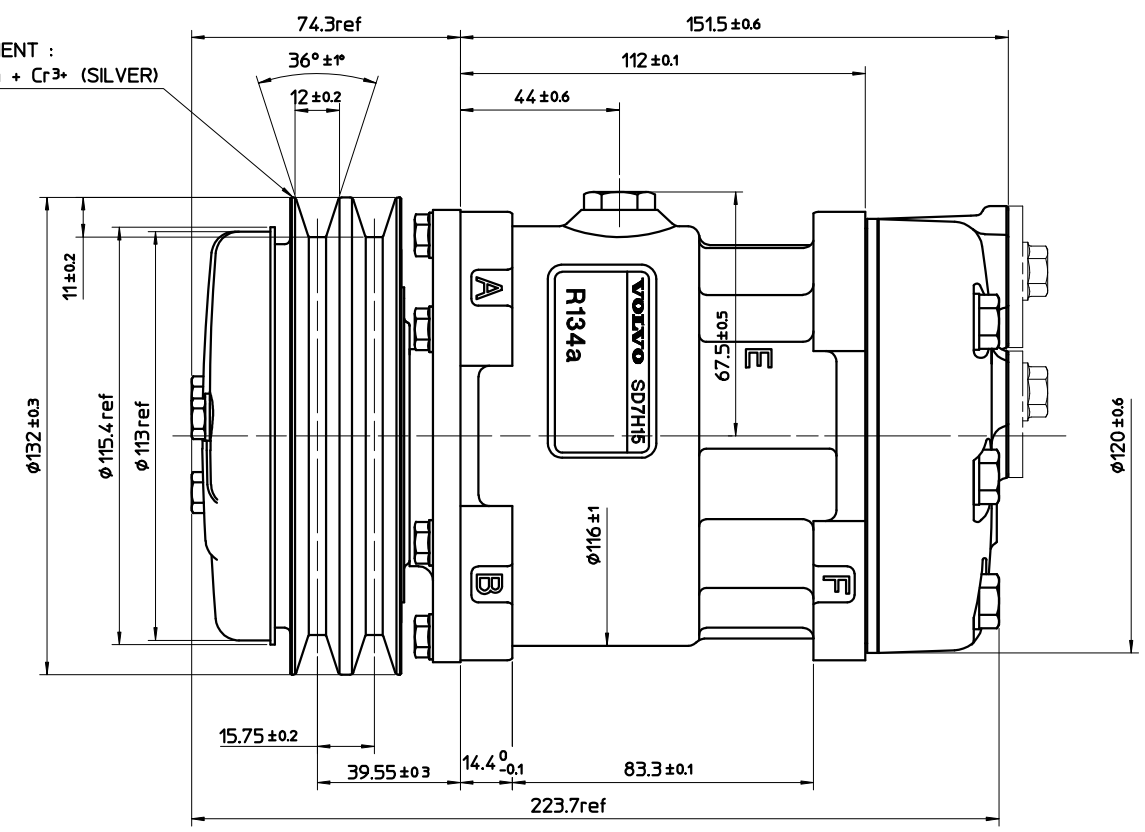


SURFACE TREATMENT :
ZnFe 8µm + Cr³⁺ (SILVER)



COMPRESSOR SPECIFICATIONS

BORE	φ29.3	mm
STROKE	32.8	mm
NUMBER OF CYLINDERS	7	
DISPLACEMENT PER REVOLUTION	154.9	cm ³ /rev.
MAXIMUM ALLOWABLE CONTINUOUS SPEED	5000	r.p.m.
MAXIMUM DOWNSHIFT SPEED	5000	r.p.m.
REFRIGERANT	R134a	
OIL	SP-10 OR EQUIVALENT	
OIL CHARGE	240	cm ³
ROTATION (CLUTCH SIDE VIEW)	CLOCKWISE	
WEIGHT		kg

NOTES

- 1.COMPLIES WITH EU ELV DIRECTIVE 2000/53/EC
- 2.THIS COMPRESSOR IS SD7H15 TYPE C MODEL (RD STAMP).
- 3.WITH PULLEY BEARING DUST COVER.
- 4.PULLEY BEARING IS EP TYPE.
- 5.VOLVO PARTS NUMBER 11412632

CLUTCH SPECIFICATIONS

RATED VOLTAGE	DC 24 V
MINIMUM BREAKAWAY TORQUE	34.3 N·m
MINIMUM ENGAGEMENT VOLTAGE	DC 16 V
MAXIMUM POWER CONSUMPTION	42 W
MAXIMUM ALLOWABLE CONTINUOUS SPEED	5000 r.p.m.
MAXIMUM DOWNSHIFT SPEED	5000 r.p.m.
BELT TYPE	A TYPE
PULLEY DIAMETER	φ132 mm
WEIGHT	kg

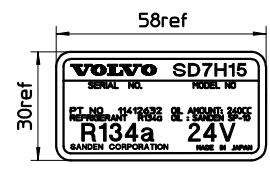
PORT O-RING P/N

SUCTION O-RING	3094874 (8003-0500)
DISCHARGE O-RING	3094875 (7846-0500)

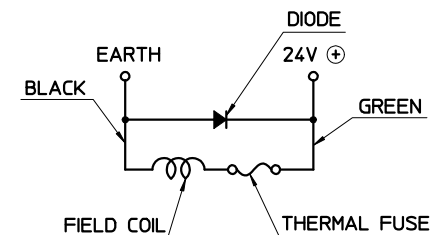
BOLT SURFACE TREATMENT SPECIFICATION

ZnFe 5µm + Cr³⁺ (SILVER)

LABEL



CIRCUIT DIAGRAM



MATERIAL		PART NO.		NAME	
THIRD ANGLE PROJECTION		SCALE 1:1		COMPRESSOR	
DESIGNED BY H.Morohashi		DATE 30 AUG 2005		MODEL SD7H15WZ8243	
CHECKED BY K.Ishuhara		DATE 31 AUG 2005		DRAWING NO 8243 - 6000	
APPROVED BY M.Iida		DATE 31 AUG 2005			
INITIAL ISSUE		H.M '05_08_30			
REVISION RECORD		BY DATE			